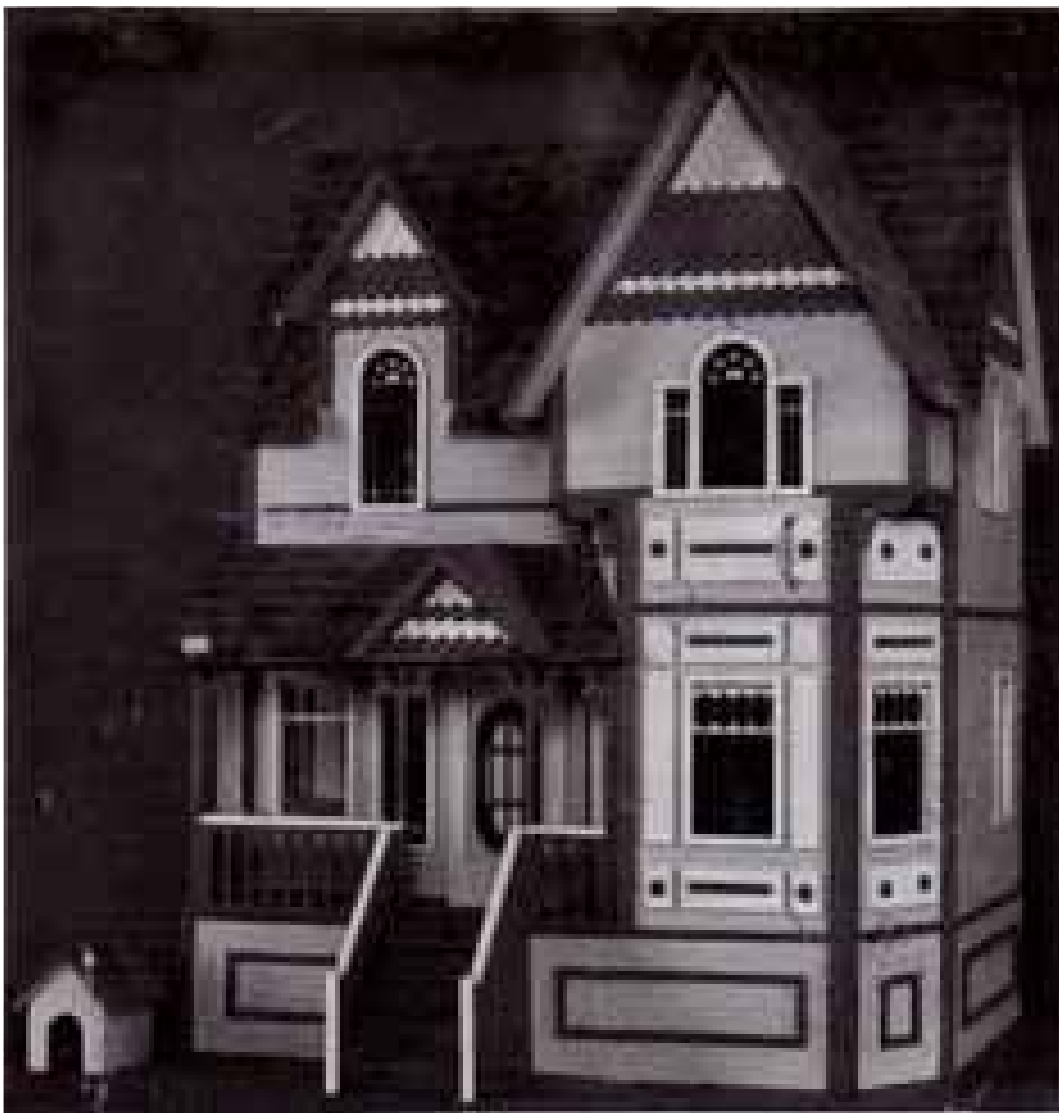


*Dura-Craft, Inc.*

P.O. Box 438 • Newberg, Oregon 97132  
(503) 538-3136

Assembly Instruction  
**NB-180**  
**NEWBURG**  
MINIATURE HOUSE KIT



**FINISHED SIZE 18"D x 25"W x 27"H**  
**SCALE: 1":1'**

## NEWBERG ASSEMBLY INSTRUCTIONS

Congratulations on selecting a miniature house kit manufactured by Dura-Craft, Inc., the leader in the industry. We pride ourselves in our high quality and workmanship. Each piece is graded and sorted at several different stages to ensure that you receive the finest quality.

A Dura-Craft miniature house is a complete kit. You will not have to make separate purchases of items like the windows and shingles which are a basic part of your house. Your finished house will be ready for painting, wallpapering, and decorating.

### READ THIS BEFORE STARTING ASSEMBLY

The following tips will help you avoid problems when you build your miniature house.

1. Save the box. The photo will be very helpful during assembly.
2. Do not remove any pieces from their punch sheet before they are called for in the instructions.
3. Read through the instructions carefully once to get a feel for the assembly process and to gain familiarity with the parts.
4. Follow the instructions in order.
5. If you cannot release a part from its board with moderate pressure, then carefully cut it loose with a utility knife. Always cut from the good side of the board where the cut lines are clearly visible.
6. If any parts are missing or damaged, they can be replaced by Dura-Craft quickly. Please write or call and give us the name and sheet number of the part or parts that you need. We have included a "Missing and Broken Parts Replacement Form" to assist you.
7. We recommend the use of Tacky glue to construct your house. This glue helps hold parts in place while it dries, and it dries clear. It can be found at most craft supply stores. Any white household glue or woodworking glue may be substituted if desired. Wipe away excess glue while it is still fresh.
8. Dura-Craft has done everything possible to ensure that your kit will look good when it is complete. We have included pine moldings to strengthen the house and to cover all the outside wall and floor edges, and we have designed the kit so that slot and tab blemishes will be hidden when the kit is finished. However, the final quality of your house will depend to some extent on the care you take in preparing each piece for assembly. Sanding is optional, but it will improve your house.

9. You will need the following materials to assist you in the assembly of your miniature house:

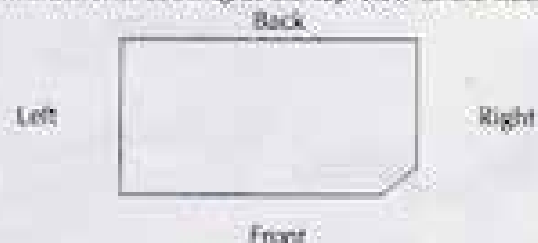
- \_\_\_ Glue (see paragraph 7 above)
- \_\_\_ Utility knife or sharp, sturdy knife
- \_\_\_ 1/4" masking tape
- \_\_\_ Damp paper towel
- \_\_\_ Ruler or tape measure
- \_\_\_ Fine toothed saw such as a coping or hacksaw is helpful
- \_\_\_ Pencil

### Inventory List

- 16 stamped sheets of parts
- 2 sheets of Fishscale Shakes
- 1 silk-screened sheet of Windows
- 4" of Corner Post
- 7" of Tower Corner Post
- 15 1/2" of Rear Trim
- 23 1/2" of Universal Trim
- 1 bag of Wooden Shakes

### Terms

- **Good side** - The side that the pieces were stamped from. The smoothest side.
- **Bead of glue** - A line of glue about as large as a pencil lead.
- **"** - inches
- **Flush** - when the ends or edges of two boards are even.
- **Left and right sides** - This orientation will be used throughout the instructions. Looking at the top view of the floor



- **Tab** - A projection off the edge of a board.
- **Slot** - A hole in a board that the tab fits into.
- **Notch** - The same as a slot except it's on the edge of a board.

## Subassembly 1

### Pine Molding

1. Cut each part to length from the proper material. Cut the longest pieces first.

#### PINE MOLDINGS

##### Quantity

##### Size

##### Tower Corner Post

3

15  $\frac{1}{4}$ "

3

11  $\frac{1}{4}$ "



##### Rear Trim

1

15  $\frac{1}{4}$ "

1

11  $\frac{1}{4}$ "

1

6  $\frac{1}{4}$ "

2

3  $\frac{1}{4}$ "

1

3  $\frac{1}{4}$ "

1

2  $\frac{1}{4}$ "



##### Corner Post

1

15  $\frac{1}{4}$ "

3

4  $\frac{1}{4}$ "

3

4

2

3  $\frac{1}{4}$ "

1

2  $\frac{1}{4}$ "



##### Universal Trim

Cut to fit



Close the "V" and tape closed as in Figure 2.



Figure 2.

2. Locate two of the 11  $\frac{1}{4}$ " Tower Corner Posts. Follow the same process as above.

3. Locate the remaining 15  $\frac{1}{4}$ " Tower Corner Posts and the 15  $\frac{1}{4}$ " Rear Trim. Follow the same process as above. See Figure 3 for correct part positioning.

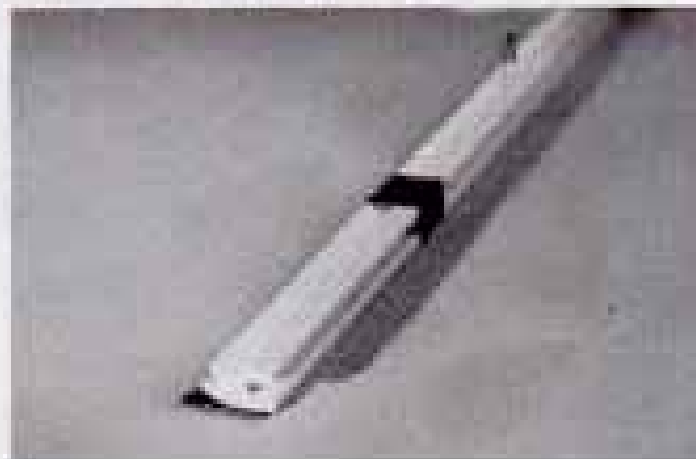


Figure 3.

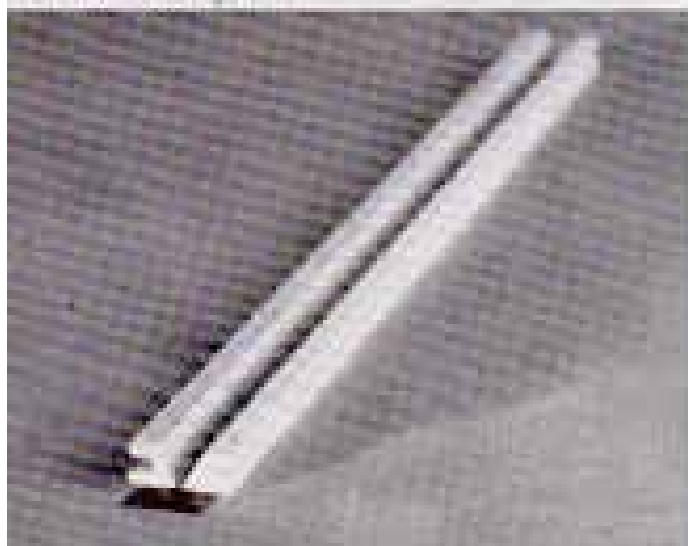
4. Locate the remaining 11  $\frac{1}{4}$ " Tower Corner Post and the 11  $\frac{1}{4}$ " Rear Trim. Follow the same process as above. See Figure 4 for correct part positioning.



## Subassembly 2

### Roofs

1. Locate two of the 15  $\frac{1}{4}$ " Tower Corner Posts. Lay a 15" strip of tape on a table with the sticky side up. Place the parts in the tape so that the tape acts as a hinge. Run a bead of glue in the "V". See Figure 1.



Locate the three 4" Corner Posts. Using a utility knife, trim one end of each post 1/4" down as shown in Figure 6.



Figure 5

6. Locate the three 4" Corner Posts. Using a utility knife, trim one end of each post 1/4" down as shown in Figure 6.

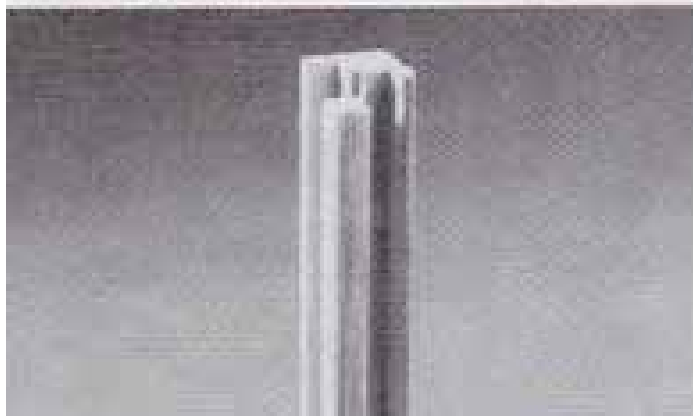


Figure 6

### Subassembly 3

#### Base

In this subassembly we will assemble the Base Floor and let it dry. Then we will assemble the Base Walls and while still wet, fit the Base Floor into the Base Wall assembly.

1. Locate the Base Floor #1, Base Floor #2, and the Base Floor Splice. Lay the Base Floor #1 and Base Floor #2 on a table with the good sides facing down. Line up the two square ends of the floors so they are flush. Run a zig-zag bead of glue along one side of the Base Floor Splice leaving a non-glue space for the slot in the Base Floor #1. Glue all three parts together as shown in Figure 7. Tape into position and let dry.



Figure 7

1. Locate Base Wall #5. Lay the base wall on a table with the good side facing down and the notch away from you. Glue the 15 7/16" post assemblies to the Base Wall as shown in Figure 9.



Figure 8

4. Locate Base Walls #1, #2, #3, and #4. Glue and tape the Base Walls together using the 4" Corner Posts. The trimmed ends go on top. The notches on the walls go on top and good sides go to the outside as in Figure 9.



While taped and glue still wet, run a bead of glue in the wall notches and around the inside-top edges of the Base Walls. Insert the Base Floor assembly with the good side up into base walls and tape into position. Wipe away excess glue. Let dry. See Figure 9.

#### Subassembly 4

##### Windows and Door

1. Locate the **Right Side Wall**, **Right Diagonal Wall**, **Right Front Wall**, **Left Diagonal Wall**, **Left Front Wall**, and the **Left Side Wall**. Locate all window and door frame parts. Lay all walls on a table with the good sides up. Glue the appropriate frames on the appropriate windows and doorway except the Window Box parts. Let dry. See Figure 10.



Figure 10

**Note:** If you plan to paint and/or wallpaper the inside of your set, you may wish to skip steps 2, 3 and 3 until the main structure of your house is complete.

2. Turn all walls over so that the good sides are facing down. Locate the **Window Sheets**. Cut along the dotted lines with scissors. Run a thin bead of glue around the window openings in the walls in  $\frac{1}{8}$ " from the edges.

3. Now center the appropriate windows over the openings (except the Window Box Window). Use a pencil point to gently push the windows down against the glue all around the window openings. Carefully wipe away excess glue and let dry. Glue the remaining frames to the proper windows, including the Window Box Inside Trim.

4. Locate the **Door** parts. Lay one of the door parts facing down. Run a thin bead of glue around the window opening. Position the window with the large oval design on the door. Run a bead of glue around the window. Place the other door part on top with the good side facing up. See Figure 11. Let dry.



Figure 11

5. Place door in doorway. You can either glue it in place or purchase hinges from a hobby shop and mount the door on hinges.

#### Subassembly 5

##### Window Box

1. Locate the **Inside Window Box Frame**, the **Outside Window Box Frame**, and the **Window Box Window**. Lay the **Outside Frame** on a table with the good side facing down. Run a thin bead of glue around the window openings. Center the **Window Box Window** on the frame. Run a thin bead of glue around the window openings again. Center the **Inside Frame** on top and let dry. See Figure 12.



Figure 12

2. Locate the **Window Box Walls** and the **Window Box Shelf**. Locate the **Left Side Wall**. Lay the **Left Side Wall** on a table with the good side up. Glue the **Window Box Walls** and **Shelf** in place as shown in Figure 13. The inside edges of the walls and the shelf should be flush with the opening in the **Left Side Wall**.



Figure 13

3. Glue the Window Box Window Frame assembly onto the Window Box Walls and Shelf. Locate the Window Box Roof. Glue the Roof into position. See Figure 14.



Figure 14

### Subassembly 6

#### Cable Shakes

1. Lay the Right Side Wall, Right Front Wall, Left Front Wall, Left Side Wall, and Porch Gable on a table with the good sides up. Draw horizontal lines across the gables with the bottom line 1" above the top edge of the top window frames. Continue drawing lines toward the top of the gables every  $\frac{1}{8}$ ". For the porch gable start the bottom line  $\frac{1}{2}$ " from the bottom of the gable. See Figure 15.



Figure 15

2. Locate the 4  $\frac{1}{4}$ " Corner Posts. Glue these to the vertical edge of the gable of the Left Front Wall. Make sure the open grooves are facing away from the good side. When these dry, trim the tops of the posts to match the slope of the gable. See Figure 16.



Figure 16

3. Locate the Fishscale Shakes. Pop them out of the sheets.

**Note:** If you plan to paint the shakes, this may be a good time to do it.

4. Starting at the bottom line, glue the shakes to the gables. Trim each strip to fit as you are gluing them on. Don't worry about a perfect fit, because Universal Trim will cover the ends. Just make sure that the shakes don't extend over the edge or cover the tabs when complete, or they may interleave with the roof. Each layer of shakes should be shifted  $\frac{1}{2}$  the width of a shake, so that the round part of the shakes line up over the cracks of the shakes below them. See Figure 17.

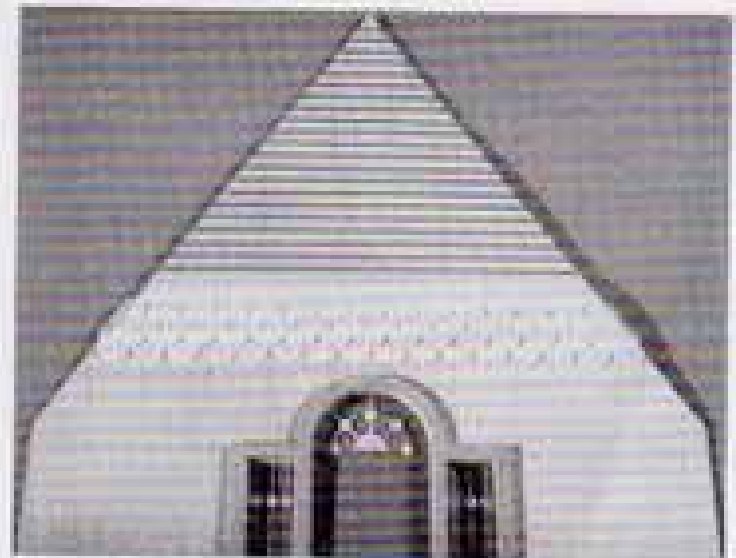


Figure 17

Complete all large gables.

5. For the Left Front Wall gable, repeat the same process except the first few strips must be carefully trimmed to fit between the corner posts.

6. Repeat the same process for the Porch Gable.

## Subassembly 7

### Wall

1. Locate the **Right Diagonal Wall**. Run a thin bead of glue in the facing grooves of the posts that are rising from the base. Slide the **Right Diagonal Wall** down the post grooves with the good side facing out. The slot in the wall is closed to the top. Wipe away excess glue. See Figure 18.



Figure 18

2. Locate the **Right Side Wall**. Run a bead of glue in the groove of the post rising from the base that is facing the back. Run a bead of glue along the bottom of the wall. With the good side facing out, insert and tape the **Right Side Wall**. See Figure 19.



Figure 19

3. Locate the **Right Front Wall**. Lay wall on a table with good side facing down and gable pointing away. Glue the double  $1\frac{1}{2}$ " Tower Corner Post assembly to the right side of the wall with open groove up. Make sure bottom of posts are even with the bottom of the wall. Tape and let dry. See Figure 20.



Figure 20

With the wall still facing down, glue the two  $3\frac{1}{4}$ " Corner Post to the short vertical sides of the gable with the open groove up. See also Figure 20. When dry, trim the tops to match the slope of the gable.

4. Run a bead of glue in the remaining open groove of the post rising from the base and along the bottom of the **Right Front Wall**. Insert the **Right Front Wall** into the groove with the good side facing out. Make sure the wall is inserted into the groove and that the outside of the wall is flush with the base. Tape and let dry. See Figure 21.



Figure 21

5. Locate the **Left Diagonal Wall**. Locate the  $1\frac{1}{2}$ " Tower Corner/Rear Trim assembly. With the good side up, glue these parts together as shown in Figure 22. Note that the tab on the end of the wall is the bottom.



Figure 22

Figure 23. Do not glue the Left Diagonal Wall to the base floor at this time. The tab on the bottom of the wall fits in the slot



Figure 23

7. Locate the Left Front Wall. Run a bead of glue in the groove connected to the Left Diagonal Wall and along the bottom of the Left Front Wall. Fit the tab on the bottom of the wall into the slot in the floor. Line up the bottom of the front side of the wall with the crack in the floor. Line up the left-most edge of the Left Front Wall to be flush with the left-most edge of the base floor (not the base wall). Tape into position and let dry. See Figure 24.



Figure 24

8. Run a bead of glue in the groove of the post on the Left Side Wall and along the bottom of the wall. Glue the Left Side Wall to the Left Front Wall. Tape and let dry. Trim the top of the post to match the slope of the gable. See Figure 25.



Figure 25

8. Run a bead of glue in the groove of the post on the Left Side Wall and along the bottom of the wall. Glue the Left Side Wall to the Left Front Wall. Tape and let dry. See Figure 26.



Figure 26

9. Locate the double 1/2" Rear Trim Assembly. Glue it to the Right Side Wall as shown in Figure 27. Tape and let dry. Trim to match the slope of the gable when dry.





Figure 27

10. Locate the **Overhang Walls**. Glue one of the **Overhang Walls** into the grooves on the **Right Side Wall** and the **Right Front Wall** as shown in Figure 27. The longest edges of the **Overhang Walls** are the tops and bottoms.

11. Locate the  $2\frac{3}{4}$ " piece of **Corner Post**. Glue onto the **Left Front Wall** as shown in Figure 28. Glue the other **Overhang Wall** in place as before.



Figure 28

## Subassembly B

### Floors

1. Locate **2nd Story Floor**, **2nd Story Bay Floor**, and **2nd Story Floor Ceiling**. Turn floors over table with good side facing up. Use



Figure 29

Turn floors over so that good sides are facing down. Glue and tape the splice into position as before.

2. Attach a 3" piece of tape to each tab so that half of the piece is extending over the edge of the board. Run a bead of glue along edges of 2nd floor assembly, excluding the long straight edge without tabs. Insert floor into position and feed each piece of tape into the corresponding slot. Tape into position and let dry. See Figure 30.

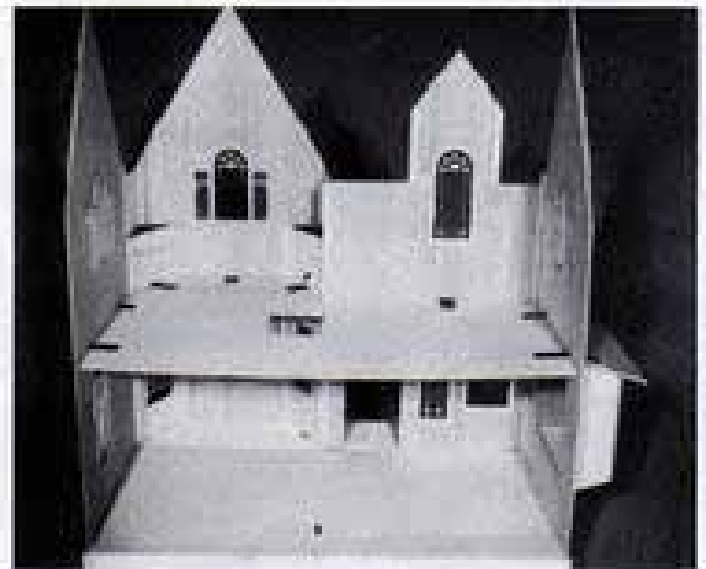


Figure 30

3. Locate the **2nd Story Bay Shelves**. Run a bead of glue along the top of the **Diagonal Walls** and along the two square edges of the shelves. Insert and tape into position to dry. Make sure the bottom outside surfaces of the shelves are flush with the bottom of the **Overhang Walls**. See Figure 31.

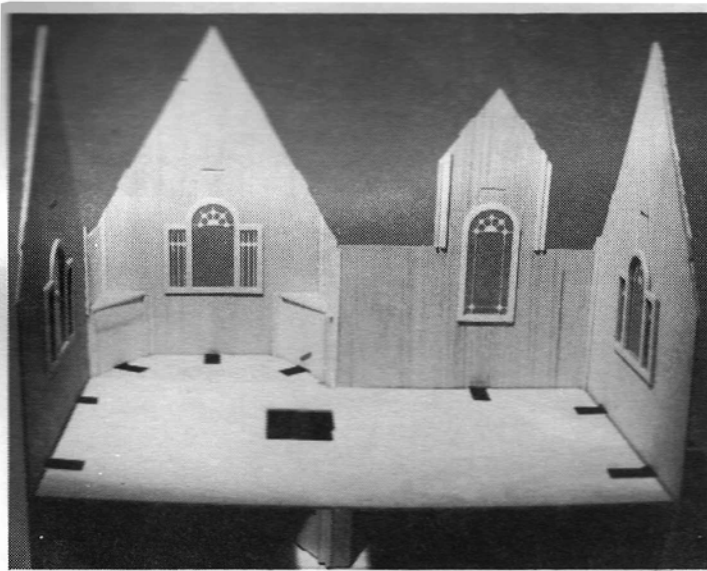


Figure 31

4. Locate **Attic Floor**, **Attic Bay Floor**, and **Attic Floor Splice**. Follow same process as with the 2nd Floor, run a glue bead **ONLY** on the floor edges that have tabs

## Subassembly 9

### Roofs

1. Locate all roof parts. Lay all roof parts with the good side up. Draw parallel, horizontal lines  $\frac{7}{8}$ " apart starting at the bottom and working up as shown in Figure 32. These lines will be used later for positioning the shingles.

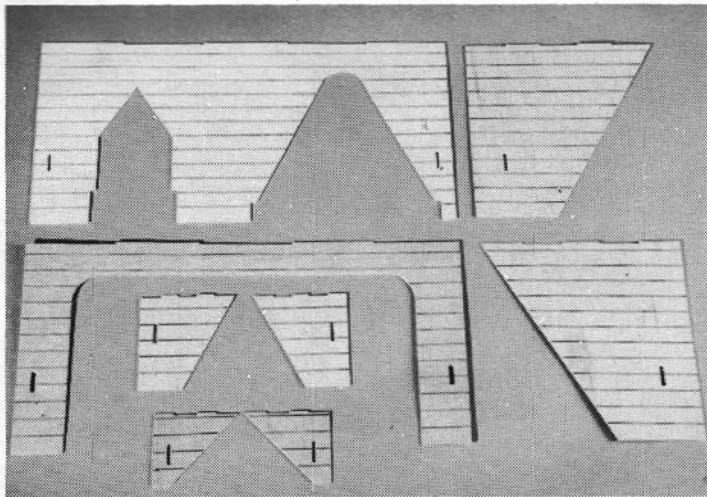


Figure 32

2. Locate the **Back Roof**. Run a bead of glue along the back gable edges of the side walls. Place the roof with the good side facing up on the gables so that the gable tabs fit into the roof slots. See Figure 33.

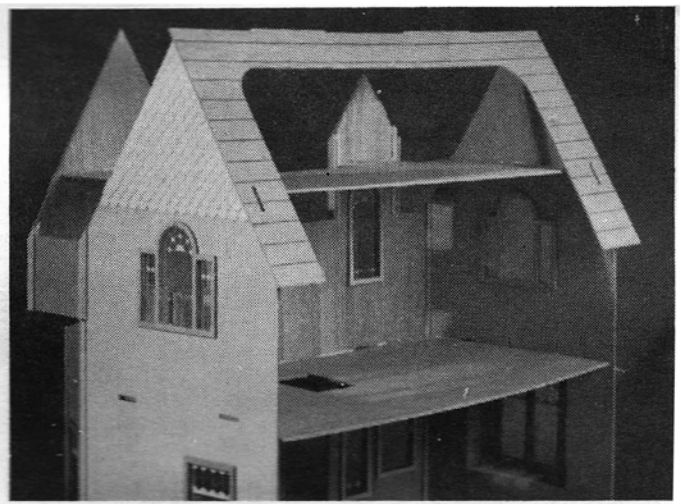


Figure 33

While the glue is still wet, locate the **Front Roof**. Run a bead of glue along the front gable edges of the Side Walls. Run a bead of glue along the notches of the Front and Back Roofs. Fit the Front Roof into position using the gable tabs and the roof slots. Fit the notches on the top edges of the roofs together as tight as possible. When the notches have been interlocked, tape over the top of the roof. Tape roof in place to dry. See Figure 34.

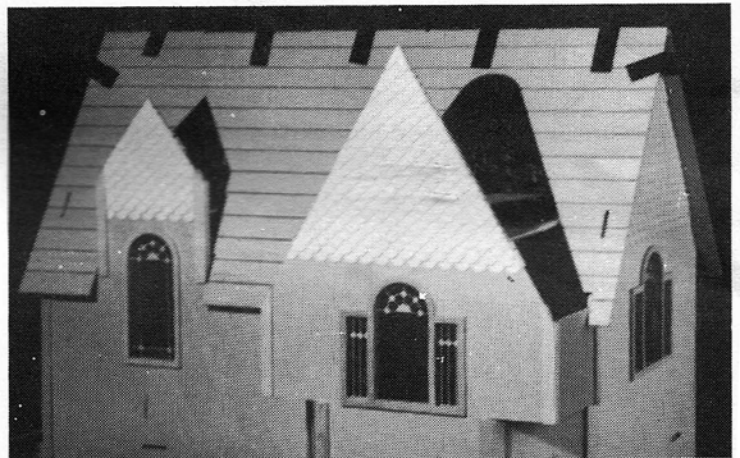


Figure 34

3. Locate the **Right Gable Roofs**. Run a bead of glue along the gable edges of the Right Front Wall, in the notches of the roofs, and along the diagonal edges of the roofs. Following the same method as with the Front and Back Roofs, fit the gable notches into the roof slots and fit and tape the roof notches together. For your convenience we have made a mark on the Front Roof to line up the Gable Roof assembly. Tape in place to dry. See Figure 35.

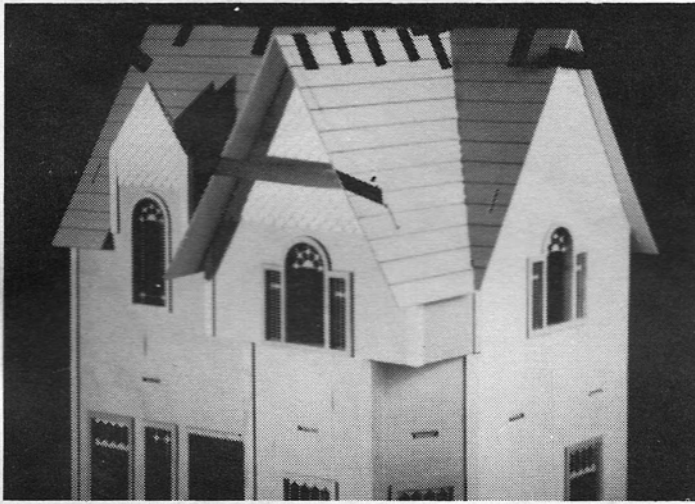


Figure 35

4. Locate the **Left Gable Walls**. Run a bead of glue in the grooves of the corner posts on the sides of the Left Front Wall gable. Glue along the diagonal edges of the gable walls. Insert walls. See Figure 36.

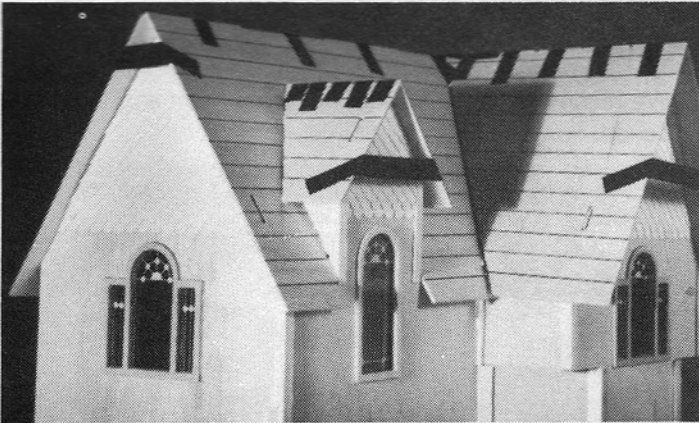


Figure 36

6. Locate the **Left Gable Roofs**. Follow the same process as with the Right Gable Roofs. See also Figure 36.

## Subassembly 10

### Porch

1. Locate the **Porch Front Rail, the 6 3/4" Rear Trim, and the 2 7/8" Rear Trim**. Glue the pieces of trim to the bottom of the rail so they are flush with the rail doorway. Locate the **Porch End Rail and the 3 1/2" Rear Trim**. Glue together as above so that one end of the trim is flush with the longest edge of the rail. See Figure 37.

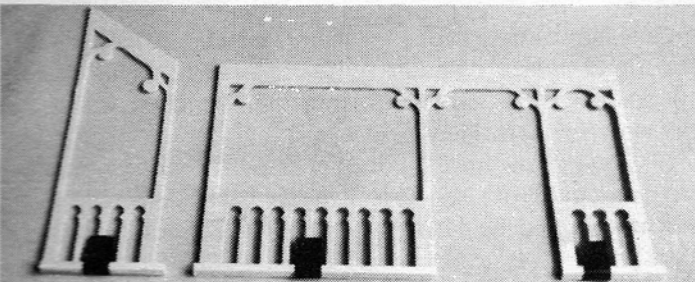


Figure 37

Trim the extending ends of the pieces of Rear Trim to fit together so that the posts of the rails can form a corner at the front left corner of the porch as in Figure 38.

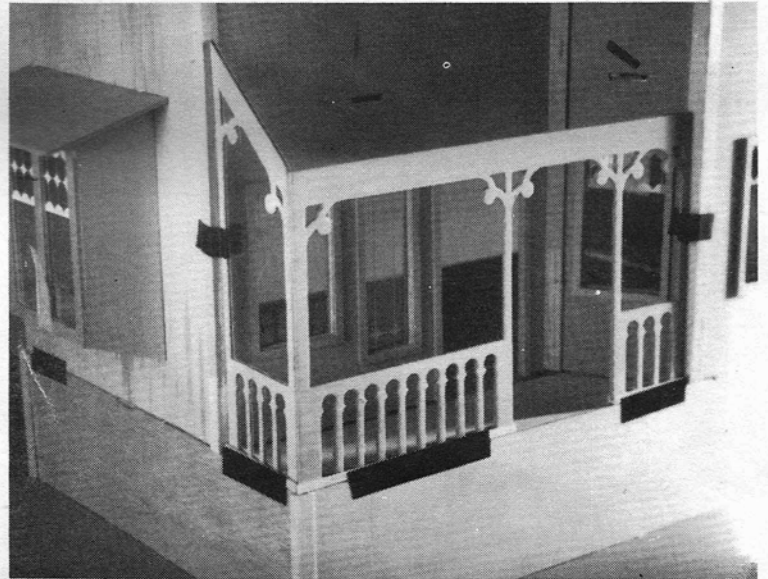


Figure 38

Trim the extending end of the 2 7/8" Rear Trim to fit the angle of the diagonal wall. Glue rails into position and let dry. See Figure 38.

3. Locate **Porch Roof**. Run a bead of glue along the top most edges of the porch rails and along the top and diagonal edges of the roof out to and including the notches. Fit the tab into the slot and rest the roof on the porch rails. Tape to dry.

4. Locate the **Porch Gable and Porch Gable Roofs**. Glue the gable roofs to the gable just the same as the other gables. Let dry. See Figure 39. Glue Gable/Roof assembly onto Porch Roof.

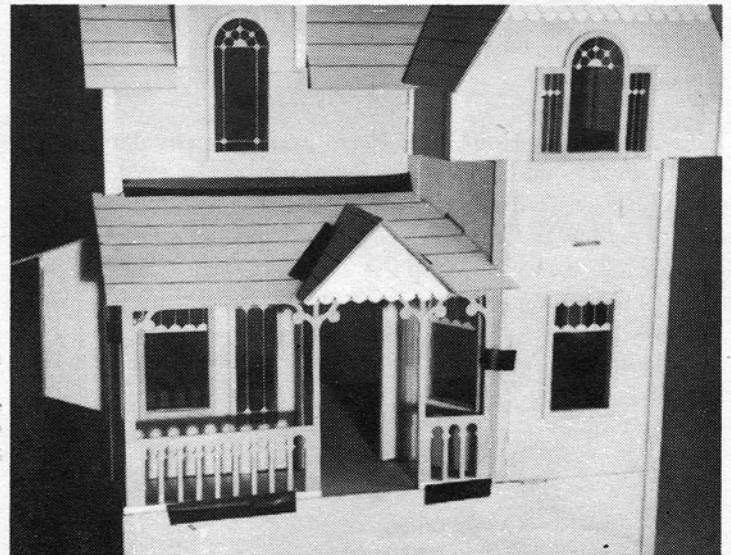


Figure 39

## Subassembly 11

### Front Steps

1. Locate the **Front Step Walls, Front Step Supports, and the Front Steps**. Lay the walls on the table with the good side down. Position the Supports as shown in Figure 40.

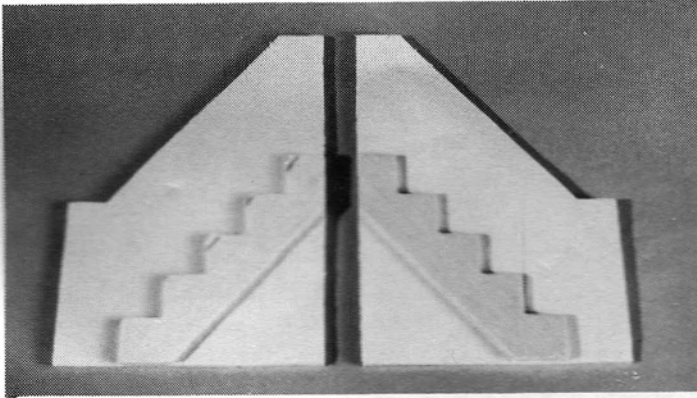


Figure 40

2. Lift the Supports and apply a zig-zag bead of glue to the contacting surfaces. The narrowest ends of the supports are the tops. Make sure all edges are flush. Let dry.

3. The widest step goes on the top step of the Supports. Glue all risers to the vertical surfaces first. Next, glue the steps on the horizontal surfaces, with the widest step on the top. Make sure the back edge of the top step is flush with the back edge of the walls. Square up the steps in the corner of a drawer and leave to dry.

4. Run a bead of glue along the back edge of the step walls. Position the step assembly in front of the porch doorway. Tape in place and let dry. See box label.

## Subassembly 12

### Divider Walls

1. Locate the **1st Floor, 2nd Floor, and Attic Divider Walls**. Before gluing into place, fit the Divider Walls into place to be sure of orientation. The 1st Floor Divider wall should be positioned so that the front edge of the wall extends past the front edge of the stairway hole in the 2nd story floor. Starting with the First Floor Divider, run a bead of glue along the edges with the tabs. Fit tabs into the appropriate slots. Let dry. See Figure 41.

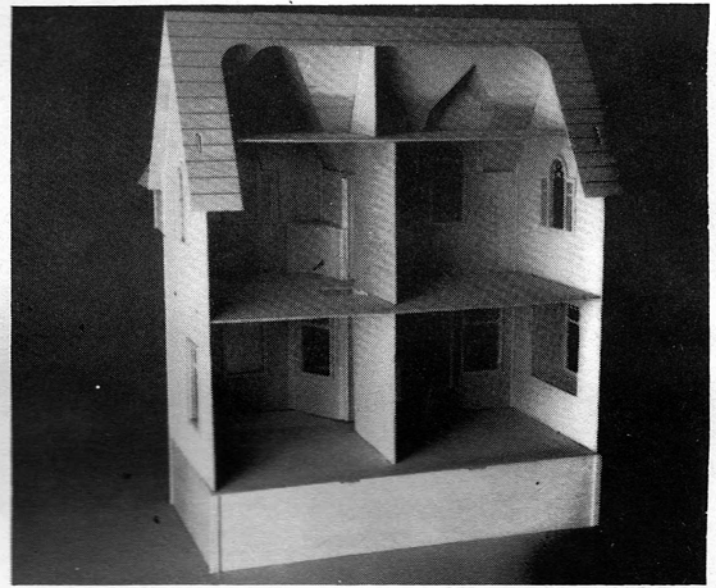


Figure 41

## Subassembly 13

### Staircase

1. We recommend that you use a corner of an empty drawer or square box as in Figure 42.

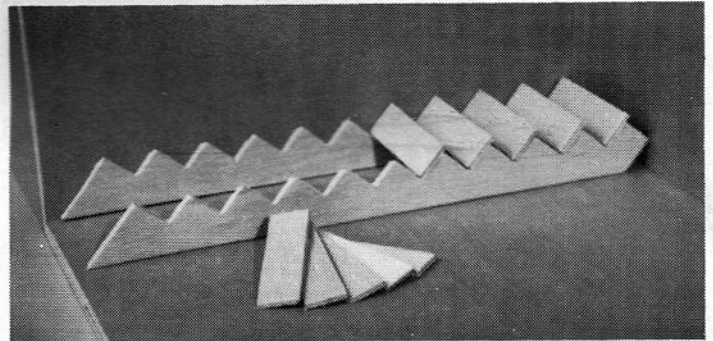


Figure 42

Line the corner of the drawer with wax paper. Place one of the staircase side pieces against an inside wall of the drawer with the bottom against the adjacent side of the drawer. The bottom is the end with the shortest point. Stand the other staircase side on its back edge parallel to the first and about 2 1/2" away. The bottom of both pieces must be against the adjacent side of the drawer to ensure that your staircase is square. Now, starting from the bottom, glue stair steps into place making sure that the ends of the stair steps are flush with the outside edges of the staircase sides. Let dry.

2. Glue the staircase in place against the 1st floor Divider Wall. The top of the staircase (the longest end) should glue against the bottom of the 2nd Floor so that the floor itself acts as the top step. See back view photo.

3. Locate the **Front and Side Banister parts**. Assemble them much as you did the Porch Rails. Glue into place as in the back view photo.

## Subassembly 14

### Shingles

1. Glue the shingles on the roof starting from the bottom and working up. Align the top edges of each row of shingles with the lines you drew earlier, and overlap each row over the row below it. The rows should be staggered so that each shingle covers a portion of the TWO shingles below it.

2. In the valleys where adjacent roofs adjoin, you will need to cut shingles at the appropriate angle to fit. A utility knife or sharp kitchen knife will work.

3. The shingles should be flush with the roof sides, but will slightly overhang the bottom edges.

On the back roof, where the roof line is curved, you can overlap the edge of the roof with shingles and then carefully cut them to conform to the roof line after the glue has thoroughly dried. In the area along the center of the back roof, trim the ends of the shingles so they only overhang the roof slightly.

4. At the roof peaks, cut the shingles so that the roof shingles come together with no gap.

## TRIM

**Note:** All trim is optional. Use the box photo and the front and back pictures on the assembly instructions as guides when applying the trim.

1. Use the Rear Trim to finish the wall and floor edges on the back of the house. Use this trim to add rails on the porch and front steps.

2. Use the Universal trim to cover the wall slots, decorate the base and front trim squares, trim the roof edges and the fishscale shakes, and to trim the base of the porch walls and inside walls.

3. Dry fit the Front Trim Pieces before gluing into position to be sure of placement. Glue and let dry.

4. Use the disks from the porch rails to decorate the Front Trim Pieces.

5. Glue the four Decorative Supports in position under the Overhang Walls.

6. You may use left over trim and plywood to cut additional trim pieces if you wish.

## Subassembly 15

### Dog House (optional)

1. Locate the **Dog House Walls and Roofs**. Glue together as in Figure 43.

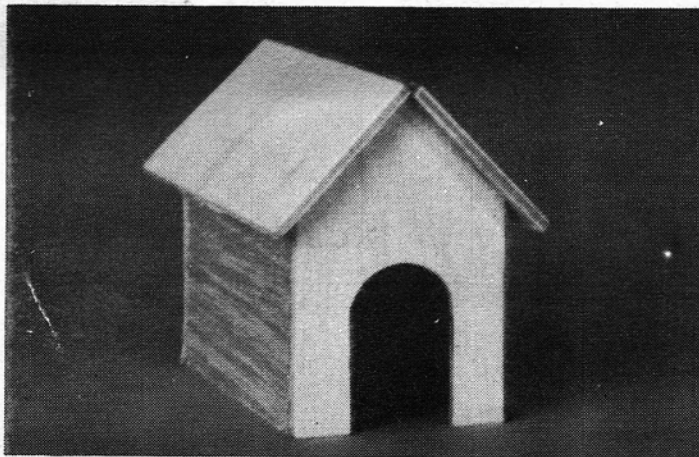
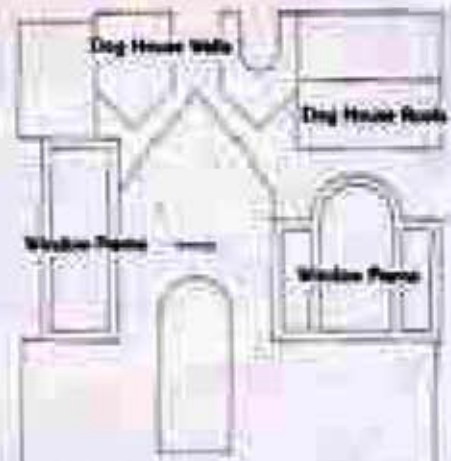


Figure 43

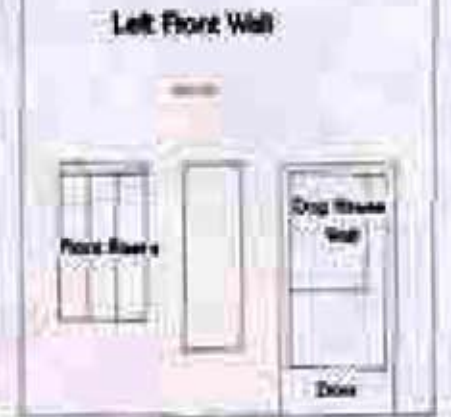
You have completed your miniature house! We know you will have many hours of fun decorating it and showing it off to your friends. If we at Dura-Craft, Inc. can be of any further assistance, please feel free to contact us.



Sheet No. NB-1



Left Front Wall



Sheet No. NB-5

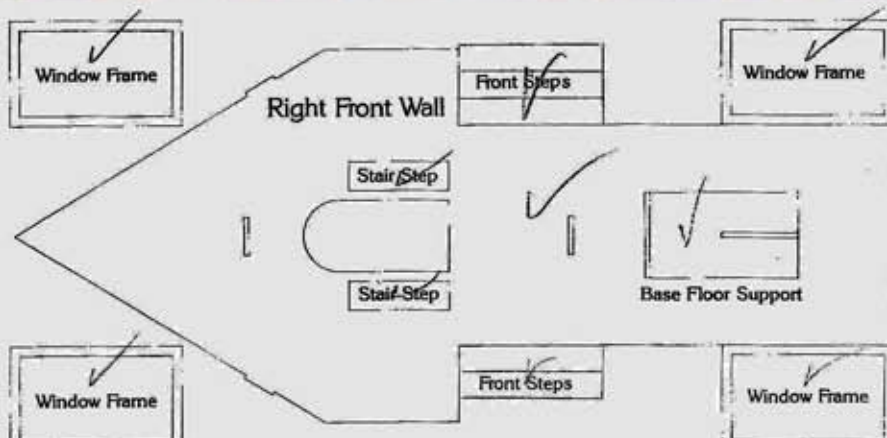


Sheet No. NB-2

Sheet No. NB-6



Sheet No. NB-3

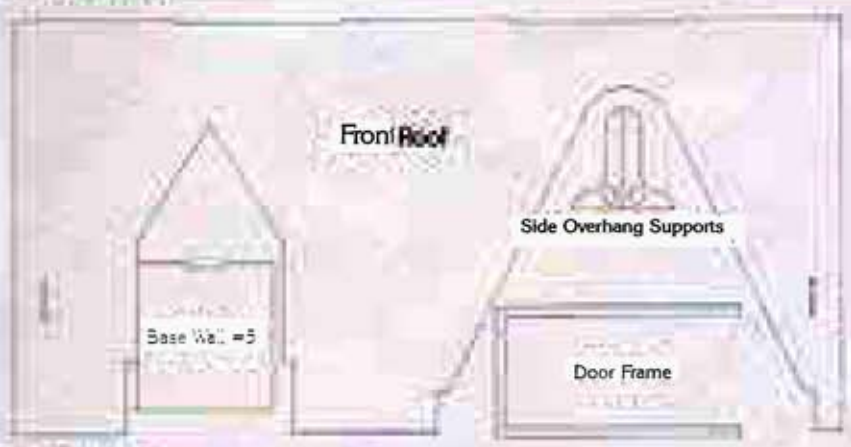




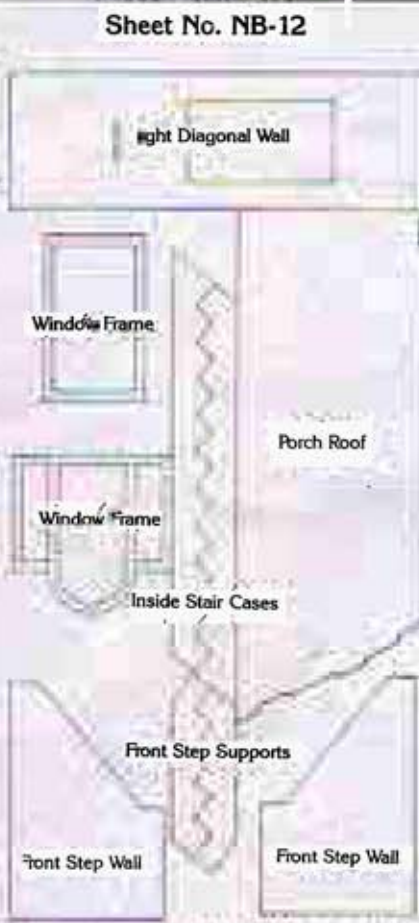
Sheet No. NB-7



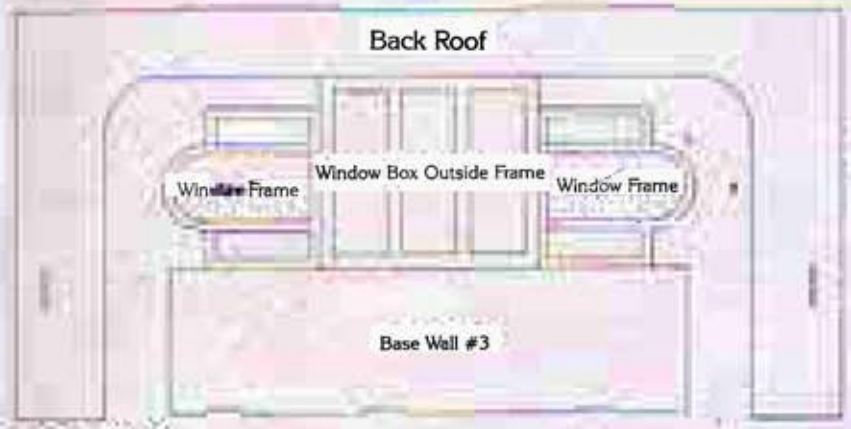
Sheet No. NB-11



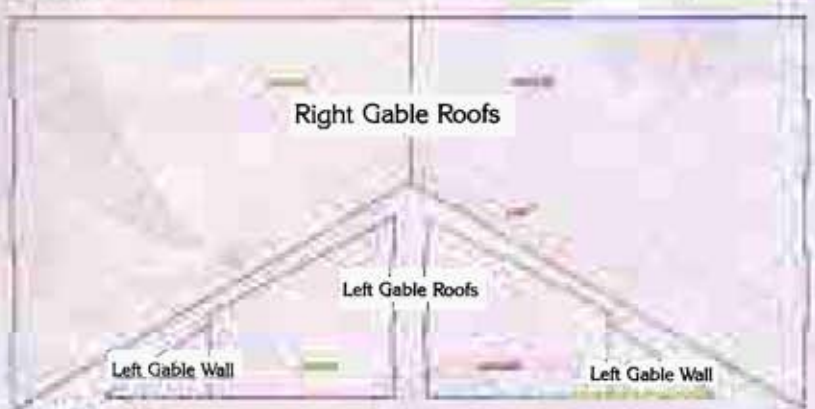
Sheet No. NB-8



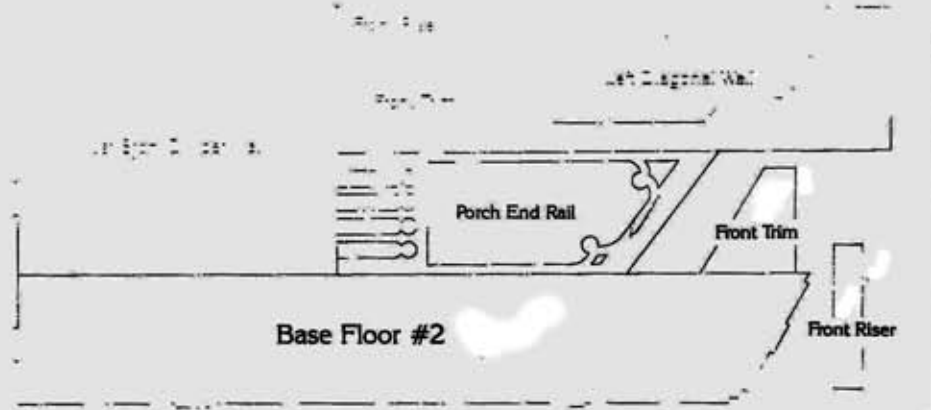
Sheet No. NB-12



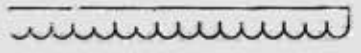
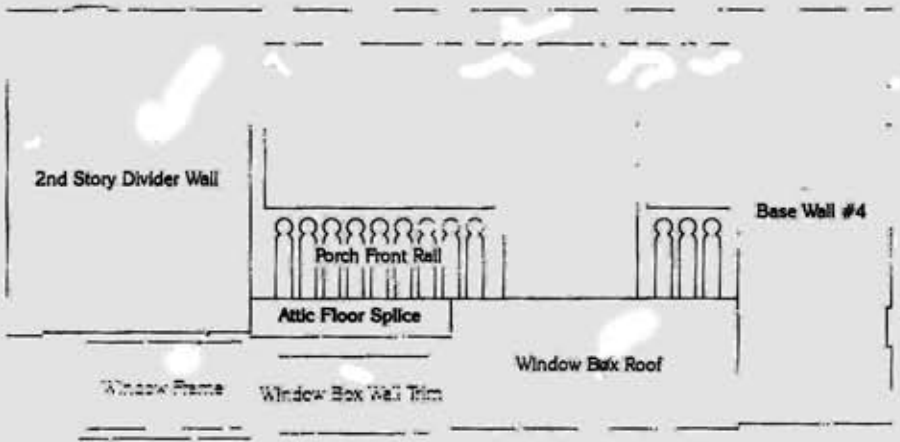
Sheet No. NB-9



Sheet No. NB-10

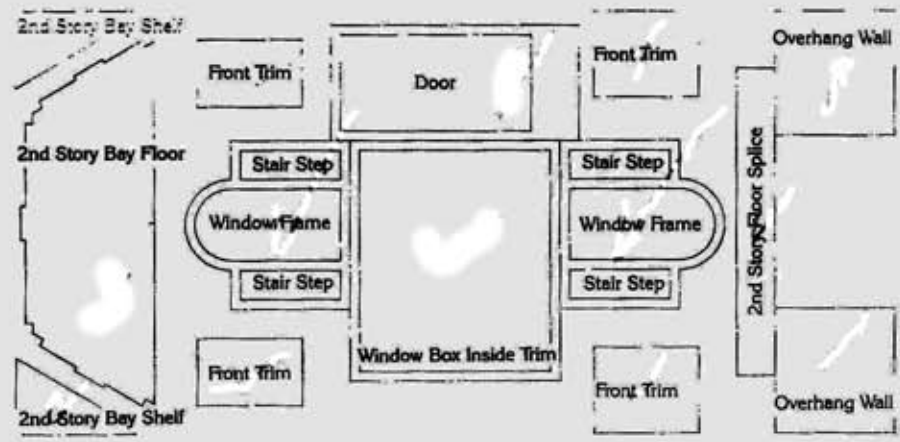


Sheet No. NB-13

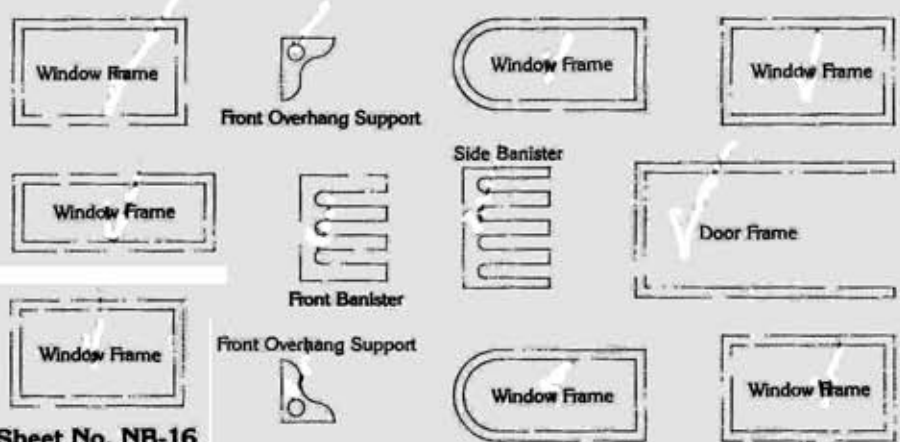


Fishscale Shakes

Sheet No. NB-14

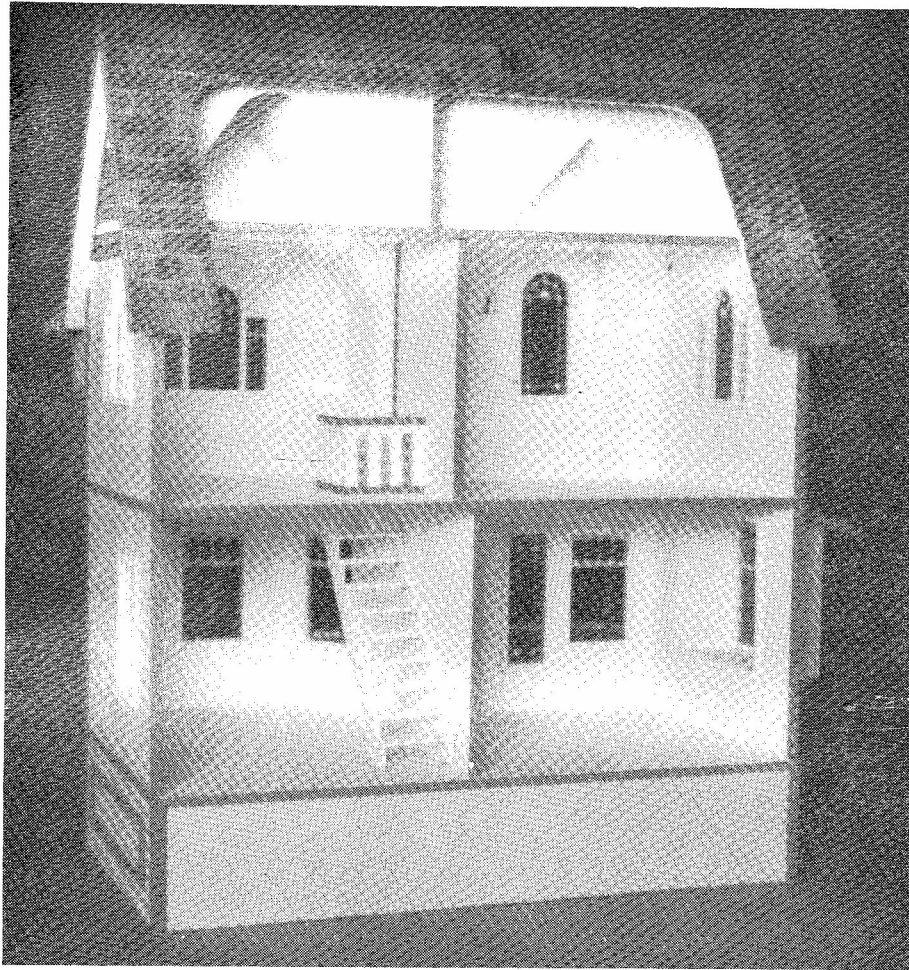


Sheet No. NB-15



Sheet No. NB-16





*Dura-Craft, Inc.*

**WARRANTY**

**Buy this kit with confidence!**

Dura-Craft, Inc. will guarantee each purchase with the necessary service and assistance to satisfactorily complete this kit. Damaged or missing parts will be replaced even if the damage is caused by improper assembly. This assistance will be supplied at no additional cost.

# MISSING AND BROKEN PARTS REPLACEMENT FORM

While we have done our very best to make sure that the kit you have purchased is complete and accurate, sometimes something goes wrong. We may have forgotten a piece, parts might have been damaged in freight, or you may have assembled it wrong. Dura-Craft policy has always been to replace parts at no charge, postage prepaid, no matter who was at fault. But please, for our records only, mark one of the following:

MISSING  DAMAGED  ASSEMBLED WRONG

Name \_\_\_\_\_

Address \_\_\_\_\_

City, State \_\_\_\_\_ Zip \_\_\_\_\_

Phone(\_\_\_\_\_) \_\_\_\_\_

Return this form to: DURA-CRAFT, INC.  
P.O. BOX 438, NEWBERG, OREGON 97132

PLEASE USE THIS FORM FOR FAST AND ACCURATE SERVICE

Sheet No.	Quantity	Name of Part