

Dura-Craft, Inc.

P. O. Box 438 Newberg, Oregon 97132

(503) 538-3138

Assembly Instructions

LF-140

LaFayette

Miniature House Kit



FINISHED SIZE: 20"H X 20 1/4"W X 14"D

SCALE: 1" = 1'

Congratulations on selecting a miniature house manufactured by Dura-Craft, Inc., the leader in the industry. We pride ourselves in our high quality and workmanship. Each piece is graded and sorted at several different stages to ensure that you receive the finest quality.

A Dura-Craft miniature house is a complete kit. You will not have to make separate purchases of items like the windows and shingles which are a basic part of your house. Your finished house will be ready for painting, wallpapering and decorating.

Your finished house will be of heirloom quality, of which you will be justly proud, if ample time and care are used in its construction and finishing.

READ THIS BEFORE STARTING ASSEMBLY

The following tips will help you avoid problems when you build your miniature house.

1. Save the box. The photo will be very helpful during assembly.

2. Do not remove any pieces from their punch sheet before they are called for in the instructions. This will reduce part warpage and make part identification easier. But, if you plan to paint your house it is easiest to paint all parts before assembly. If you plan to do this we recommend that wood be glued to wood. That means if all parts are painted, the areas here glue will need to be applied will need to be masked with tape or sanded later.

3. Read through the instructions carefully once

4. Follow the instructions in order.

5. If you cannot release a part from its board with moderate pressure, then carefully cut it loose with a utility knife. Always cut from the good side of the board where the cut lines are clearly visible.

6. If any parts are missing or damaged, they can be quickly replaced by Dura-Craft. Please write or call and give us the name and sheet number of the part or parts that you need. We have included a "Missing and Broken Parts Replacement Form" to assist you. It may save time to make missing or broken parts from the scrap material.

7. We recommend the use of Aleene's Tacky Glue to construct your house. This glue helps hold parts in place while it dries, and it dries clear. It can be found at most craft supply stores. Any white household glue or woodwork glue may be substituted if desired. Wipe away excess glue while it is still fresh.

8. Dura-Craft has done everything possible to ensure that your kit will look good when it is complete. We have included pine moldings to strengthen the house and trim to cover all of the outside wall and floor edges, and we have designed the kit so that slot and tab positions will be hidden when the kit is finished. However, the final quality of your house will depend to some extent on the care you take repairing each piece for assembly. Sanding is optional, but it will improve your house. It will also remove splinters from the edges of the parts which will help the parts fit better.

9. You will need the following materials to assist you in the assembly of your miniature house:

- Glue (see paragraph 7 above)
- Utility knife or sharp, sturdy knife
- 3/4" masking tape
- Damp cloth

- is helpful
- Pencil
- 100 grade (med.) sand paper
- A roll of waxed paper

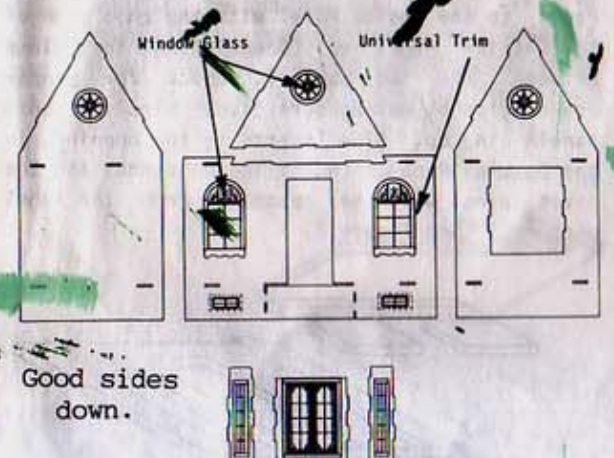
INVENTORY LIST

- Part No. LF-1 through LF-8
- 8 stamped sheets of parts (see back of instructions)
- 1 silkscreened sheet of windows Part No. 6-35
- 27 small dowels (1/8"x2") Part No. 6-2
- 2 brackets Part No. 5-155
- 500 plain shakes (1 1/8") Part No. 5-150
- 12" gutter Part No. 5-142
- 36" down spout (1/4" Dowel) Part No. 5-143
- 37' universal trim (1/8"x5/16") Part No. 5-3
- 7' small edge trim Part No. 5-70
- 24" small corner post Part No. S5-2
- 2 door knobs Part No. 6-17



Figure 2

2. Cut out Window Glass. Turn walls over so the good side is down. Run a thin bead of glue around the window openings. Spread with your finger. Set window in place with the whitest side down. Using a pencil, press the glass down for full contact with the glue. You may have to tape glass in position. Glue Window Surrounds and Universal Trim in place like the other side. (If you plan to wallpaper, then add Universal Trim after wallpapering.) There is no need to surround the cellar windows on this side because they will be under the floor. See Figure 3.



- Good side- The side the pieces were stamped from. The smoothest side.
- Bead of glue- A line of glue about as large as a pencil lead.
- 1/8" - inches.
- Flush- When the edges of two boards are even.
- Left and right sides- All references will be made from the front view, unless otherwise instructed.
- Tab- A projection off the edge of a board.
- Slot- A hole in a board that a tab fits into.
- Notch- The same as a slot, except it's on the edge of a board.
- Glass- Silkscreened plastic sheets.

LF 140 LAFAYETTE ASSEMBLY INSTRUCTIONS

1. Locate Left Wall, Right Wall, Front Gable, and Right Wall (LF-1, 2, 4, 5). Locate Window Surrounds (LF-3, 4, 5, 6). Glue Surrounds to the outside of the walls as in Figure 1. Wipe excess glue away with a damp cloth.

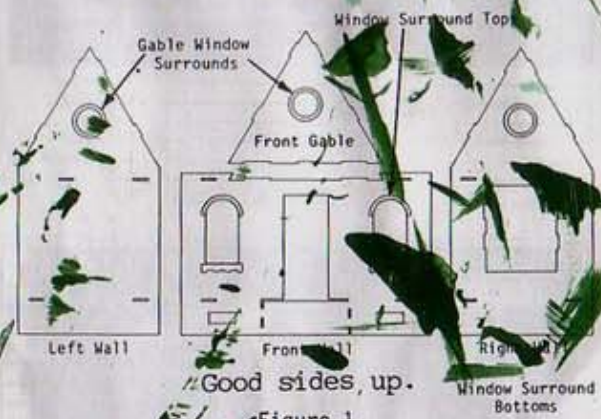


Figure 1

2. Locate Window Box Bottom and Side Walls (LF-7, 8). Cut to fit Universal Trim around these window openings and glue to the good sides of these parts as in Figure 2. Finish trimming the Front Wall Windows and Cellar Windows with Universal Trim.

3. Tape S5-2 and 5-70 to the proper edges of the Left and Right Walls. The GOOD SIDES OF THE WALLS ARE DOWN and THE GROOVES OF THE S5-2 ARE UP. Draw lines on the S5-2 and 5-70 continuing the slope of the gable. Remove the S5-2 and the 5-70 from the walls. Cut on lines and glue back in position. See Figure 4.

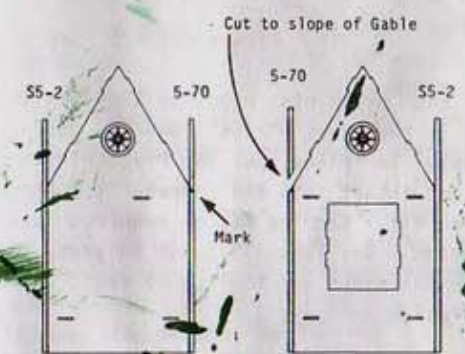
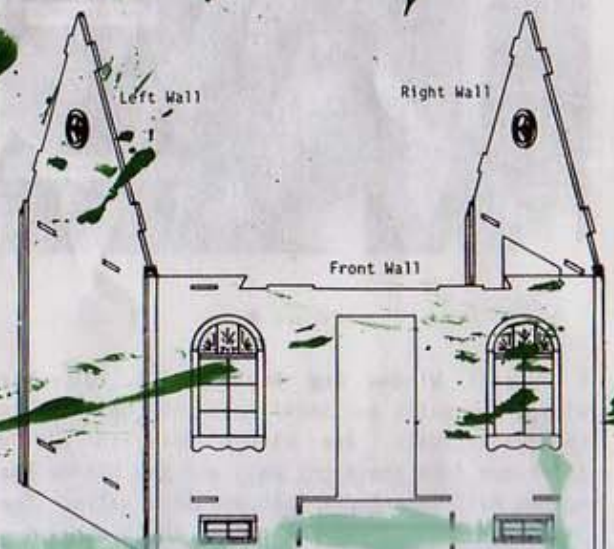


Figure 4

4. Glue Left, Front, and Right Walls together. See Figure 5.



5. Locate 1st Floor (LF-1). Glue 1st Floor into walls. Locate 1st Floor Support (LF-8). Glue in place approximately 1/4" from inside edge of 5-70 on wall edge. Tape well. See Figure 6.

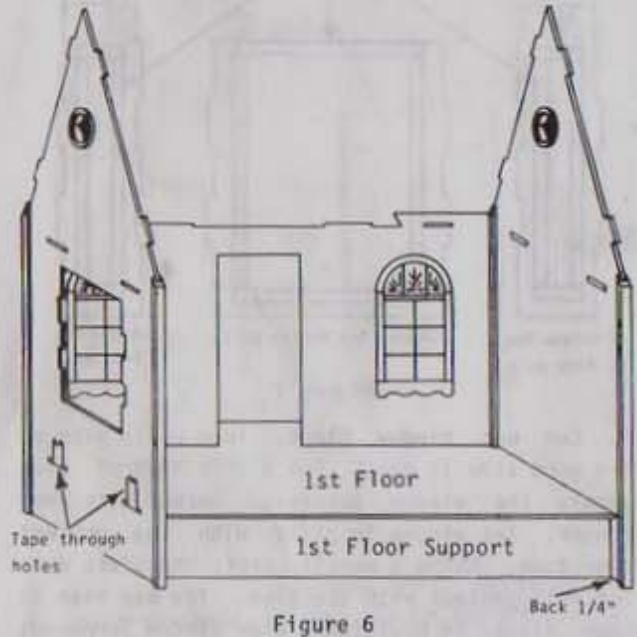


Figure 6

6. Locate Inside and Outside Door Panels, Door Pivot Plates, and Door Inserts (LF-2), and Front Door Window Glass. Lay the good side of the Inside Panel down. Glue glass to the Inside Panel like the other windows. Glue the Outside Panel to the Inside Panel with the good side of the Outside Panel up (Sandwiching the glass between the two panels). Check for proper orientation by making sure pivot pins of both panels line up. Glue inserts in the openings in the Outside Panel. (NOTE: The doorknobs and the pivot pins will be opposite from the label picture.) See Figure 7.

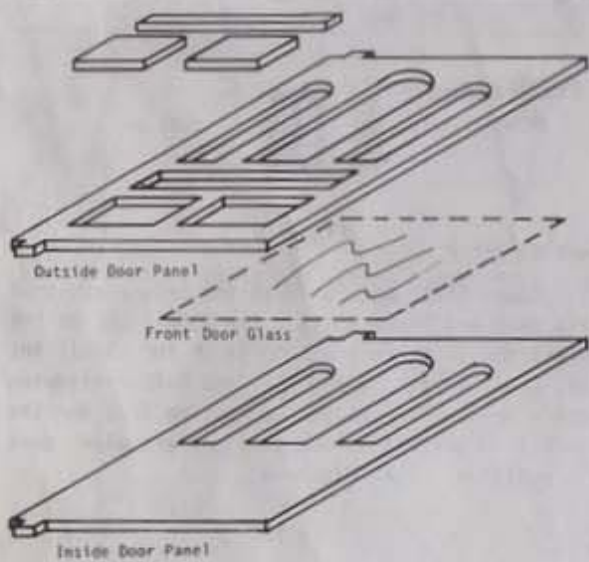


Figure 7

7. Locate Door Assembly (LF-3). Glue in place. Before gluing door assembly in place, put the Pivot Plates on the floor and insert into the doorway to check for proper fit. Sanding may be required for smooth operation. See Figure 8. Cut Universal Trim to fit on the sides and the top of the door opening both inside and out.

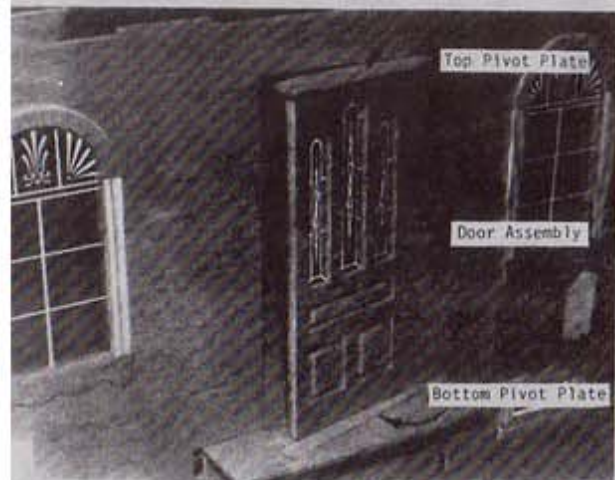


Figure 8

8. Locate Window Box Shelf (LF-8). Glue the Window Box Walls and shelf into the opening in the Right Wall. The Window Box Side Walls interlock into the Right Wall and the Window Box Bottom Wall interlocks into the Side Walls. The shelf has a 1/8" overhang into the house. See Figure 9.



Figure 9

8. Locate the Second Floor (LF-5). Glue in Place as in Figure 10.



Figure 10

9. Install and glue Front Gable into Front Wall as in Figure 11.

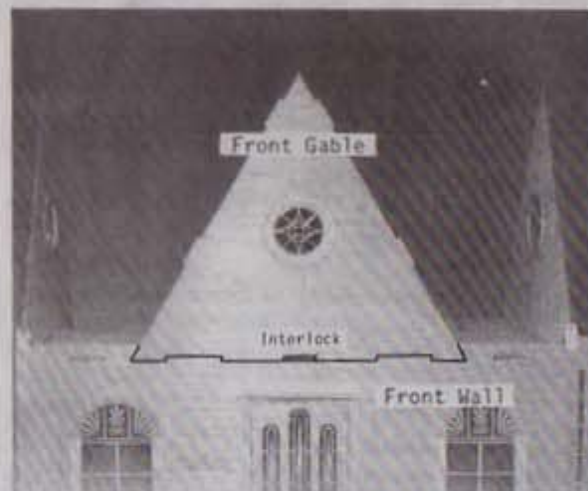


Figure 11

10. Locate Front Roof, Front Gable Left and Right Roofs, and Back Roof (LF-3,4,6,7). Draw lines across the roofs where the score marks have been made. See Figure 12.

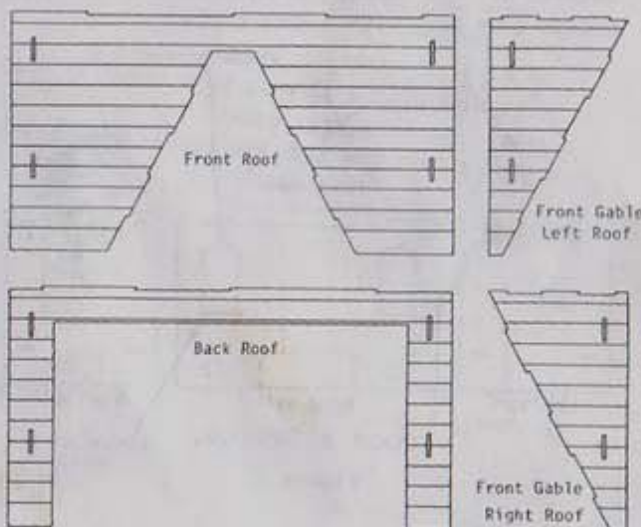


Figure 12

Interlock Gable Roofs into the Front Roof and glue in place. Glue Front Roof assembly and Back Roof to the gables of the walls on tabs. See Figure 13.

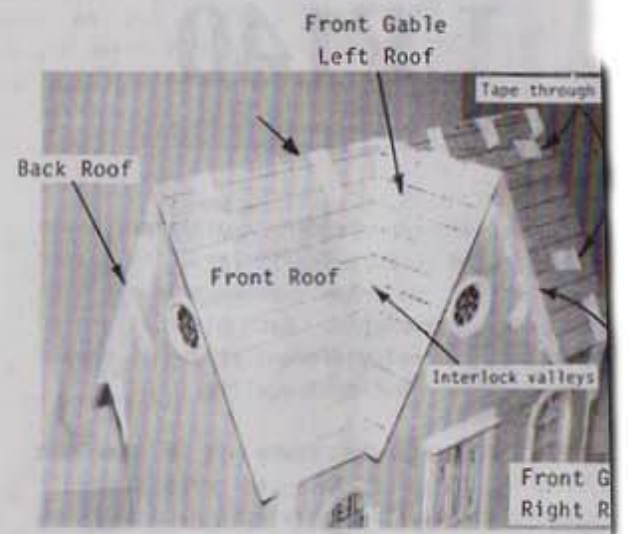


Figure 13

11. Locate Porch Front, Porch Side Tops, Window Box Top, and Gable Peak Decors. (LF-5,6,7) Lay parts with the good sides down. Cut glue 6-2s to these parts as in Figure 14.

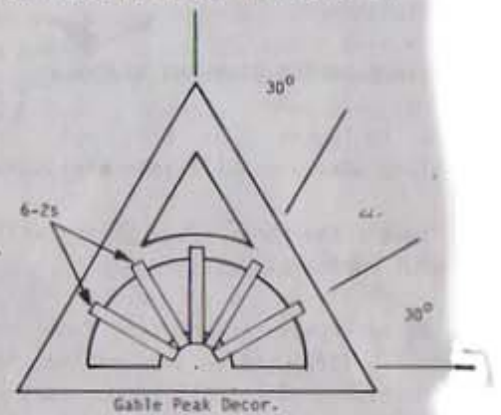


Figure 14

Glue the Gable Peak Decors. in the peaks of the gables and the Window Box Top in place. See Figure 15 and 16.



Figure 15

Figure 16

12. Locate the Porch Bottom Side Walls (LF-1). Glue Top and Bottom Porch Sides to the Porch Front. Glue Porch assembly to front of house as in Figure 17.



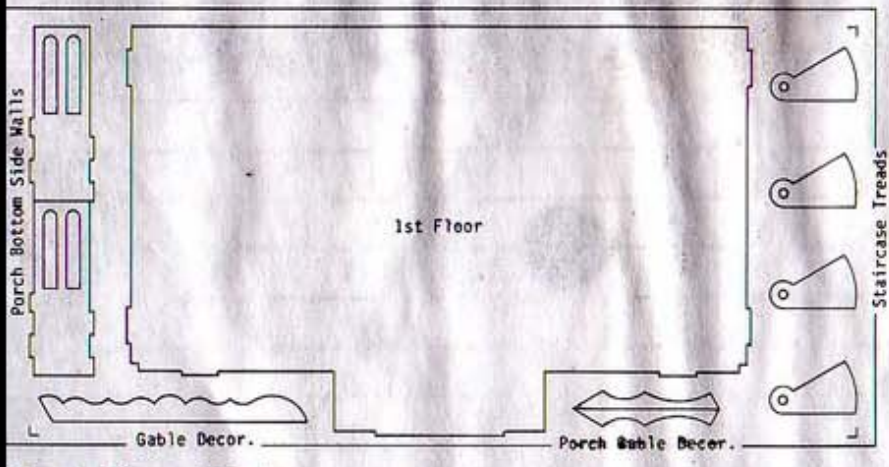
Figure 17

13. Locate Porch Roof and Window Box Roof (LF-7,8). Draw shake lines like other roofs. Glue roofs in place.

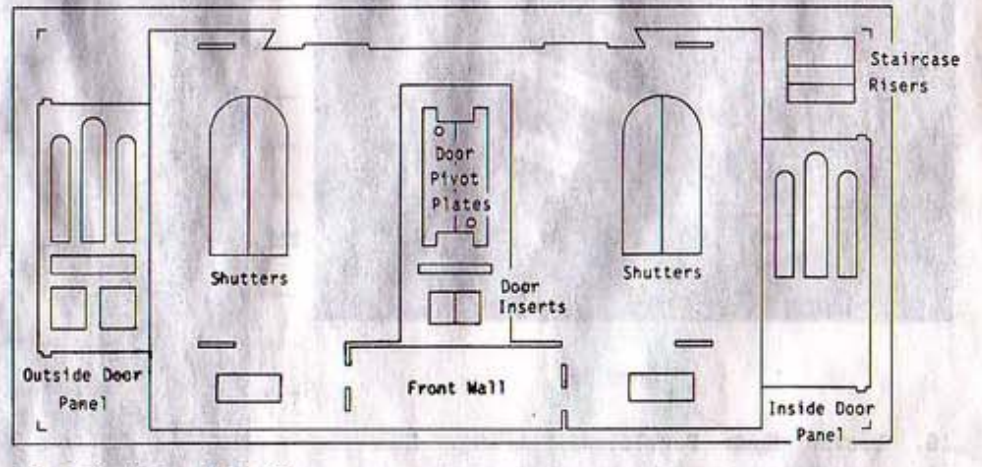
14. Locate Gable Decorative Trim, Porch Decorative Trim, and Window Box Decorative Trim (LF-1,3,4,5,6). The Gable Deco. parts with the flat tips go to the front of the Left and Right Wall Gables (The Gutters will glue to these flat spots). Glue parts in place below the Gable Peak Decors.

15. Locate Front Step Treads and Risers (LF-4,8). Assemble as in Figure 18. Glue to front of house.

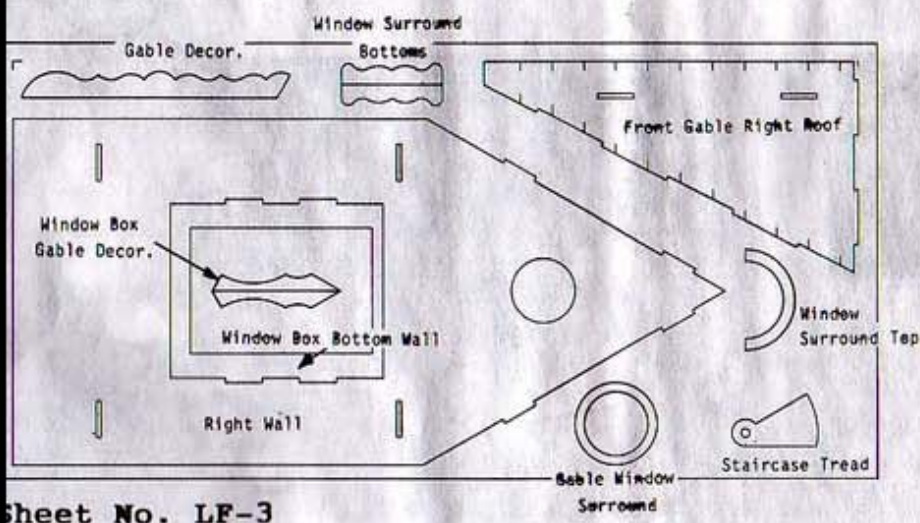
EACH PART IS HELD IN THE BOARD BY NOTCHES, THESE NOTCHES
MUST BE CUT BEFORE REMOVING PARTS FROM THE BOARDS.



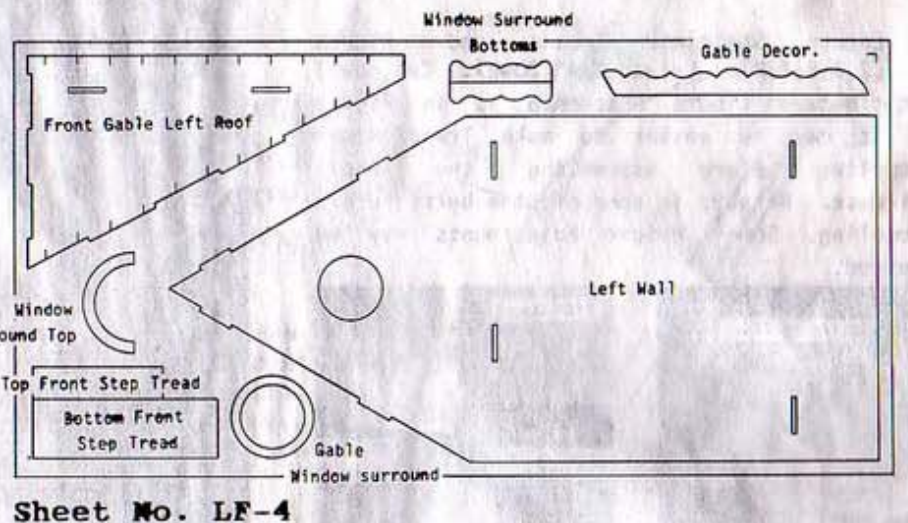
Sheet No. LF-1



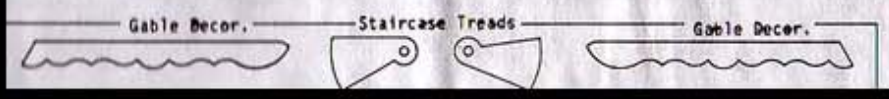
Sheet No. LF-2



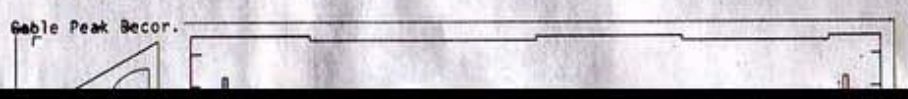
Sheet No. LF-3



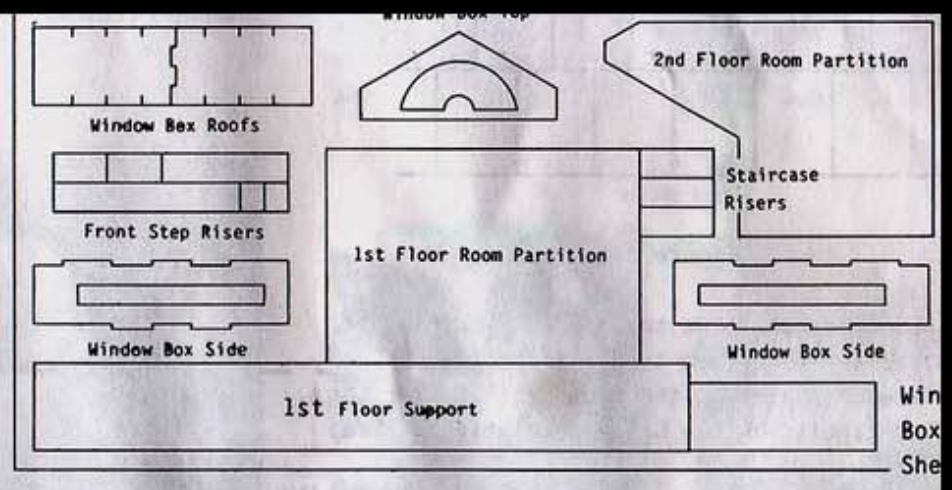
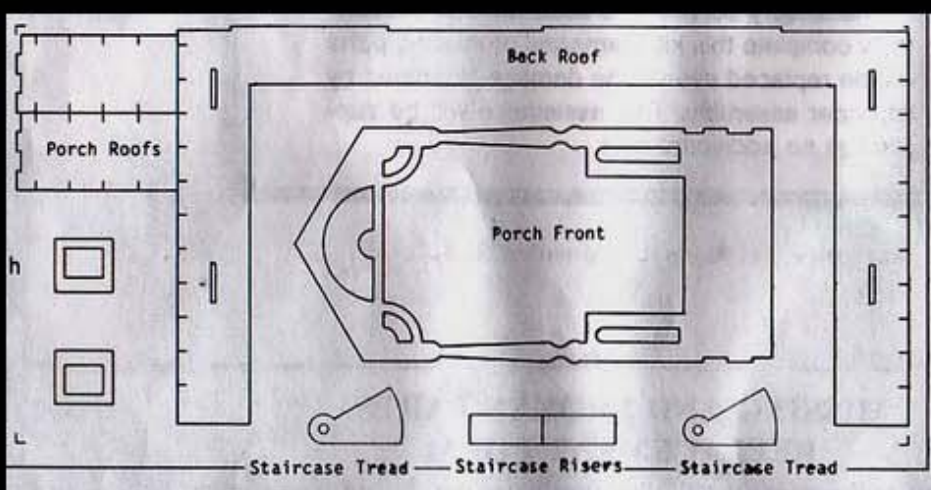
Sheet No. LF-4



Sheet No. LF-7



Sheet No. LF-8



Dura-Craft, Inc.
P.O. Box 459
Newberg, OR 97132
(503) 538-3136