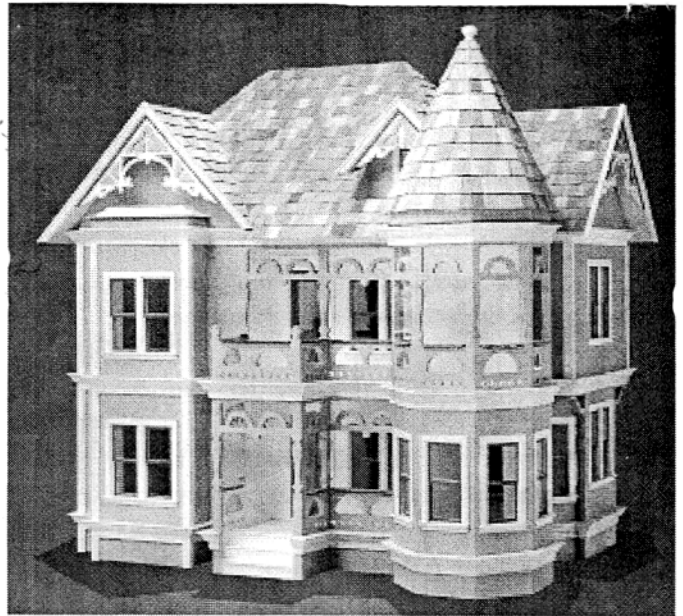


AX760 The Alexandria Assembly Instructions 2002 Dura-Craft, Inc.



Thank you for choosing to build a Dura-Craft, Inc. Dollhouse! Our company enjoys being able to manufacture and deliver this kit to you and we sincerely hope you enjoy the assembly process.

Building a dollhouse is a craft. We have done our best to provide quality parts and pieces to assist you with this project, but the time it takes for the assembly depends on a number of factors such as your skill level, your dollhouse building experience, and what a “finished” dollhouse means to you.

Some of our customers look for an unpainted structure for a little one to enjoy. For these assemblers, the Alexandria can be completed rather quickly. Other customers prefer to add the included moulding and decorations. This will add some time to your finished project. Still others dollhouse builders wish to assemble a crafter’s show piece, with paint, wallpaper, electric lights, etc. This again, will increase your assembly time. As you can see, it is rather difficult for us to recommend an assembly time. Perhaps you will be able to complete this in no time flat, or perhaps this will become an ongoing project that you can add on to as your creativity flows.

With this in mind, good luck and have a great time with The Alexandria!

Some beginning pointers:

1. **Save the Box.** The photo on the box will be a helpful reference to you during assembly.
2. **Read Instructions First.** It is a good idea to read through the complete instructions before you begin constructing your house. This will help you get a feel for the assembly process and to become familiar with the parts. It is also a good idea to take a parts inventory. Though we strive to provide you with a high quality kit, sometimes pieces can get damaged.
3. **Follow Instructions in Order.** The order of events is important.
4. **Release Parts Gently.** Parts in the 1/8 inch plywood boards must be removed by exerting gentle pressure. If the piece cannot be removed easily in this manner you may carefully cut it with a utility knife. Cut from the front side of the board where the cut lines are clearly visible.
5. **Dry Fit Before Gluing.** The Dura-Lock™ construction allows for all shell pieces to be assembled without glue. This enables you to see that you have the correct pieces in the right places before you permanently glue them in place.

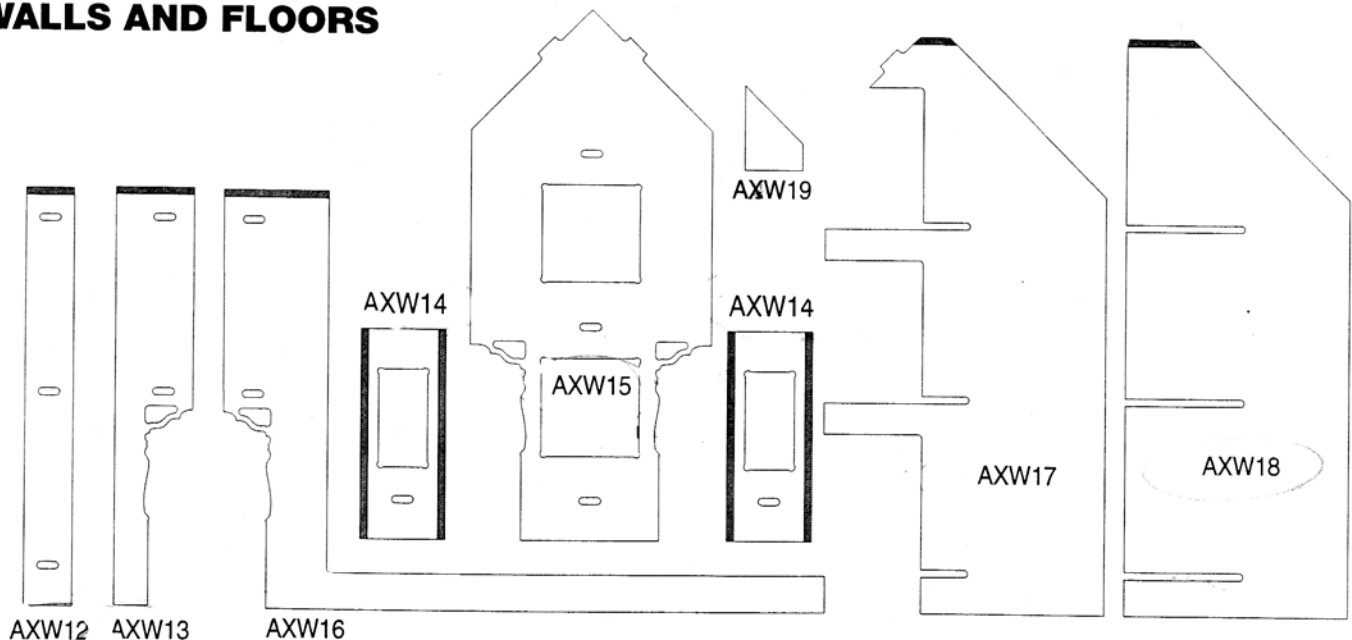
6. **Use Woodworking or “Tacky” Glue.** Most glues recommended for woodworking or porous materials are fine. We recommend a yellow woodworking glue on the main structure of the house and a “tacky” craft glue on the trim pieces.
7. **Painting.** These instructions are designed to help you construct the basic house kit. If it is your intention to paint, wallpaper, carpet etc., you will need to make your own reasonable judgments about when these procedures will best be performed. As a general rule, if you are not electrifying your house, it is easier to paint and/or wallpaper as you go along. Best results can be obtained by using a good sealer before applying paint. Latex paint is preferred.
8. **Removing Tabs.** In order to insure a high level of quality, tabs are added to some parts to prevent movement during construction. In order to remove these tabs, merely take some fine sand paper and remove them. Some larger tabs are used to help protect the part during shipping. To remove these tabs, a utility knife or fine tooth saw may be used.
9. **Sand to Fit.** Due to the nature of medium density fiberboard (MDF), parts may swell slightly due to changes in weather. If this occurs, merely use fine sand paper to sand MDF parts to fit, as you desire. This may be most noticeable where windows and doors fit into the walls. Do not force the windows or doors to fit. With a little sanding, they should fall into place perfectly.

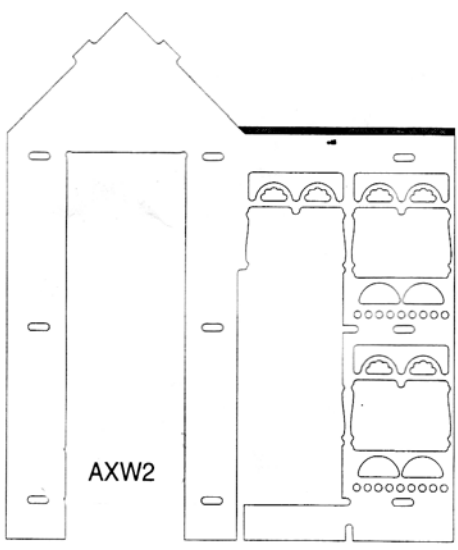
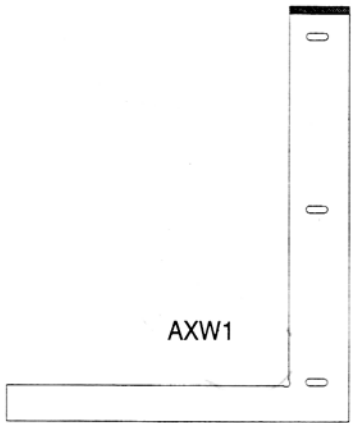
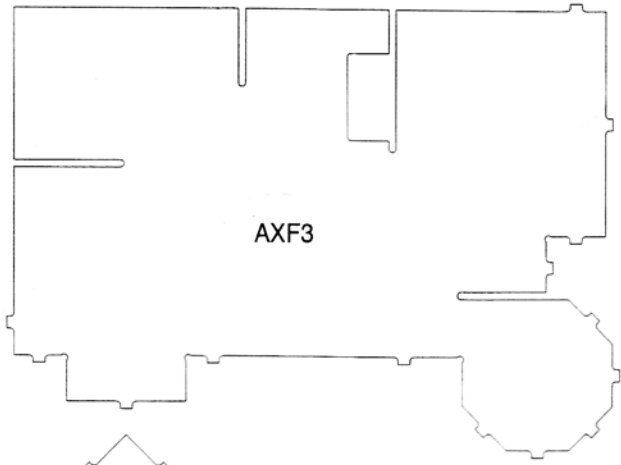
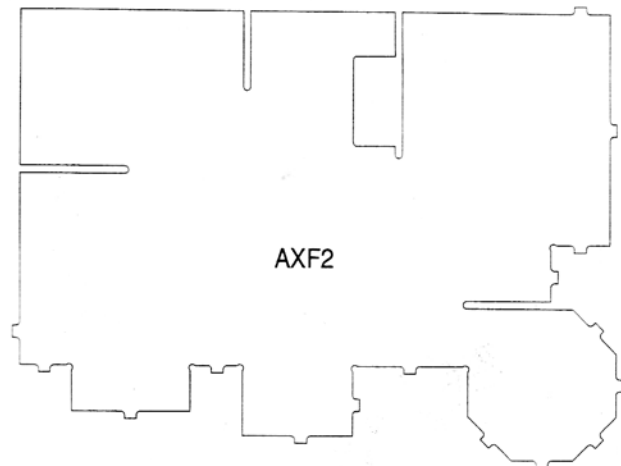
Contact Us For Replacement Parts. We stand by our warranty! If you discover a missing, or damaged piece, we will replace it, even if the damage resulted from improper assembly (windows and doors not included in warranty). We have included a “Parts Replacement Form” at the end of this document to assist you. *Please contact Dura-Craft directly for replacement parts. We can be reached by phone: (503) 538-3136, fax: (503) 538-7012, or e-mail: contact@dura-craft.com.*

MDF CONSTRUCTION TIPS

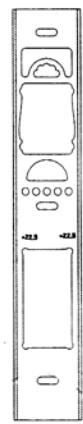
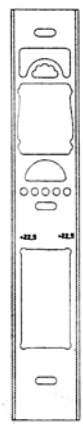
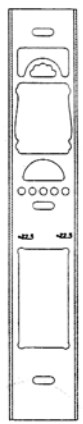
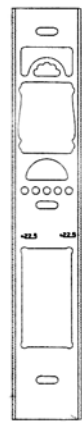
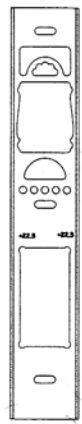
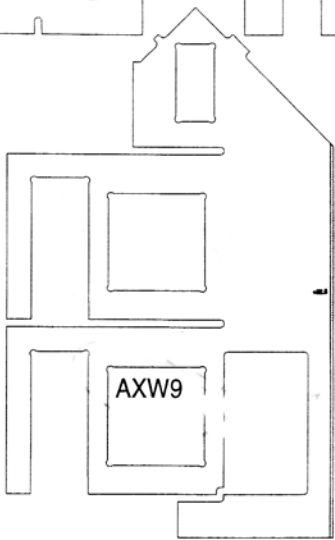
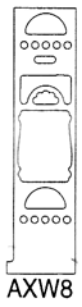
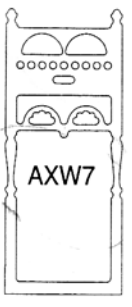
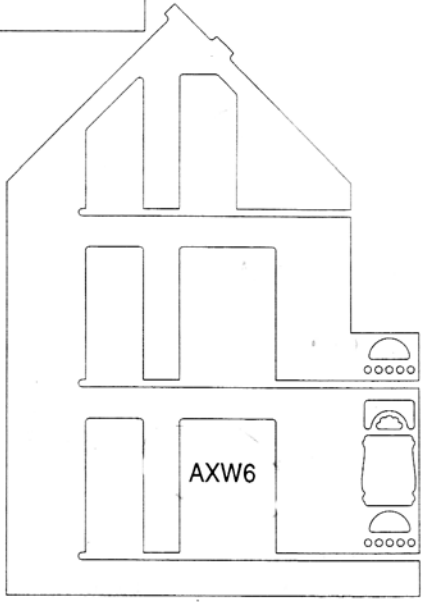
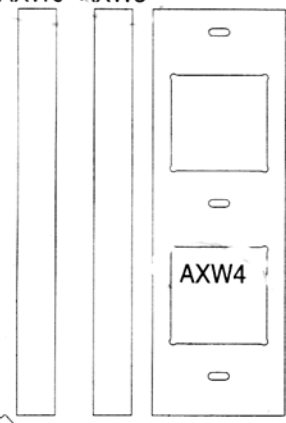
- 1. Part Familiarity.** Take a minute prior to beginning assembly to familiarize yourself with each part of the house. It is also helpful to use a pencil and mark the parts. While the new Dura-Lock™ construction system allows for easy assembly, knowing each part before you start speeds up the process.
- 2. Removing Tabs.** In order to insure a high level of quality, small tabs are added to some parts to prevent movement during construction. In order to remove these tabs, merely take some fine sand paper and remove them. Some larger tabs are used to help protect the part during shipping. To remove these tabs, a utility knife or fine tooth saw may be used.
- 3. Sand to Fit.** Due to the nature of medium density fiberboard (MDF), parts may have slight variations or imperfections, or may swell slightly due to changes in weather. If this occurs, merely use fine sand paper to sand MDF parts to fit, as you desire. This may be most noticeable where windows and doors fit into the walls. Do not force the windows or doors to fit. With a little sanding, they should fall into place perfectly.
- 4. Tape Parts During Assembly.** The MDF parts are constructed to fit tightly together. To ensure the best fit during assembly, tape each part into place as you work. This will ensure that parts maintain proper alignment as you build.
- 5. Self-Guiding Construction Tabs.** The parts have been constructed with assembly tabs to align with corresponding slots, and help with proper construction. Some “play” has been designed into each slot to allow for variations in MDF and paint.
- 6. Dry Fit Before Gluing.** Due to the new Dura-Lock™ assembly system, it is possible to build the entire dollhouse shell without gluing first. This allows you to become familiar with the parts and proper assembly. It also allows you to pre-mark walls for painting and/or wallpapering.
- 7. Paint / Wallpaper Before Gluing.** Another helpful hint is to wallpaper and/or paint the shell of the dollhouse prior to final assembly. The parts have been constructed to accommodate this. If you do this, you may need to use nails or brads during assembly as some glues may have trouble bonding with the paint or wallpaper. It is best to try and not paint slots where the parts connect.

WALLS AND FLOORS





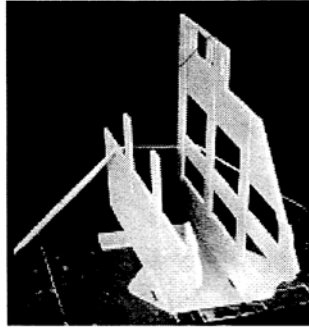
AXW3 AXW3



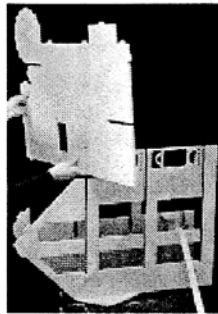
8 DOORS ASSEMBLY

See with assembly, the instructions assume you are building the Alexandria together. You may glue in place if you wish, but we don't suggest it at first.

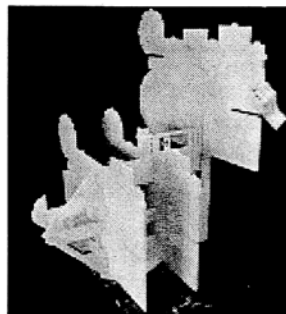
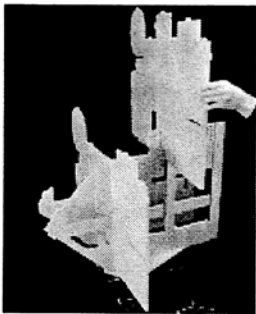
At the beginning of assembly, we begin with The Alexandria on its back. This is to use gravity to ensure a tight fit. In order for the walls and floors to be in place while the house is on its back, we suggest using the house on part AXR3 (to use it as a "shim" to level the parts). We have used tape to hold both AXW6 and AXW17 into place so you can see the placement of AXR3. It may be helpful to have an assistant help put together the first few parts. While the Dura-Lock™ system makes assembly easy, the parts are quite large and can be awkward for one person to handle.



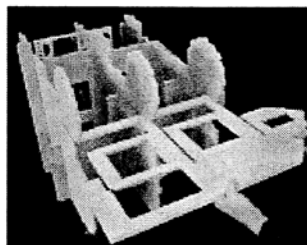
2. After positioning AXW6 and AXW18 onto AXR3, begin with the third floor (AXF3) and slide it into place as shown. Make sure the tower (the octagonal section of the floor) is closest to AXW17.



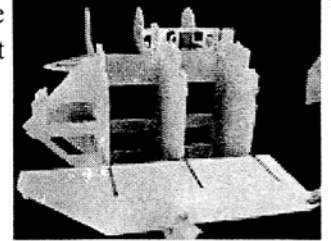
3. Repeat this process with the second floor (AXF2) and with the first floor (AXF1). After sliding each floor into place, tape the parts in order to ensure a tight fit.



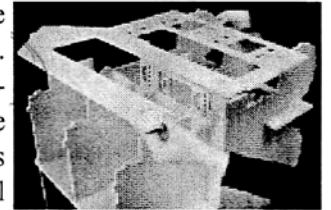
4. Next, take AXW9 and slide it into all three floors in the slots on the tower side. Use the picture as a guide. Again, fitting the part square and taping before you proceed to the next step is very helpful.



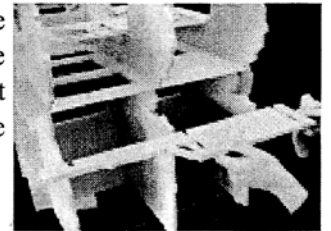
5. Now move to the opposite side of the house and insert AXW18 into all three floors.



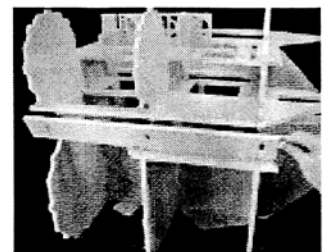
6. The front face plate of the Alexandria is next (AXW2). This piece ships with a tab connecting the part in the middle of the bottom section. This is to protect the piece and will need to be removed with a utility knife or small tooth saw. After this is done, slide the part into place as shown in the picture. This piece is delicate and large, so work slowly and don't force it. If you have squared each of the previous pieces and taped them into place, the piece will slide down easier.



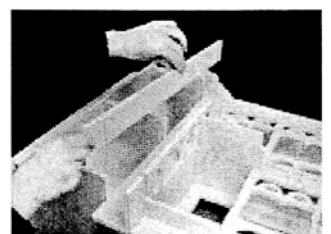
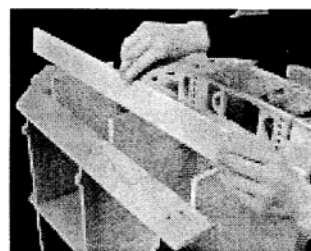
7. Next, slide AXW13 into the slots shown. To properly fit the piece, slide it into the slots first and then drop it down onto the tabs.



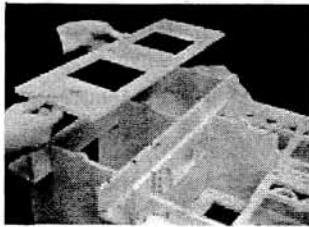
8. After sliding in AXW13, AXW12 should fit snugly. As with all the parts, use the tabs for proper alignment.



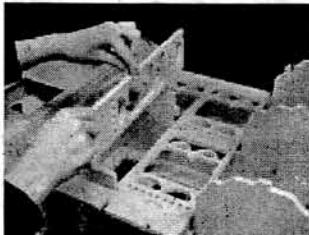
9. Next move back to the opposite side of the house and place both AXW3 parts into place. Since there are no tabs for these parts, position each part level with the bottom of AXW2. These parts will need to be taped into place.



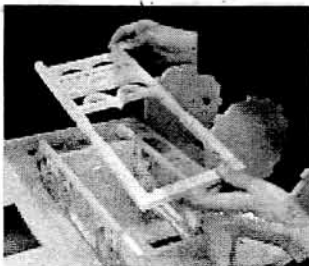
10. After both AXW3 are taped, drop AXW4 into place. Be careful, however, while AXW4 looks symmetrical, it is not. Use the tabs and level the part with AXW3 in order to insure proper placement.



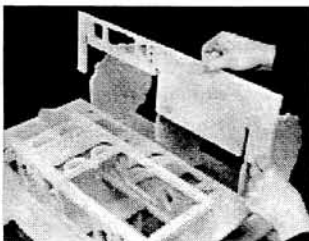
11. Next, move to the porch. AXW8 comes with a tab, which slides into a slot in AXW2. Slide into place and tape.



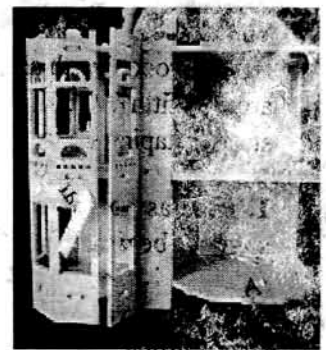
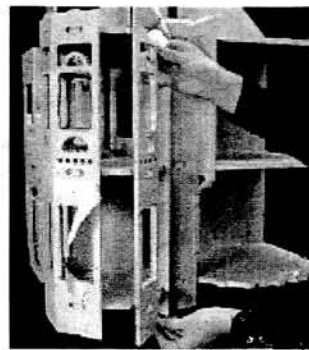
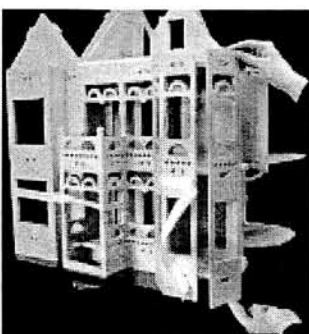
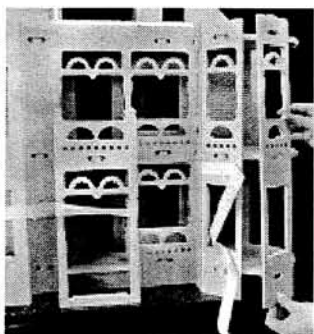
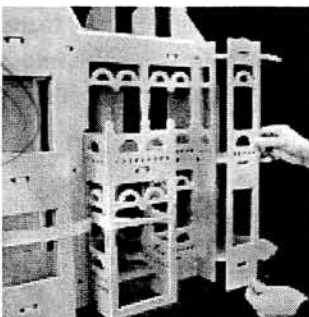
12. AXW7 completes the porch and drops into place after completing step 11. Align the part to be flush with both sides of the porch and tape into place.



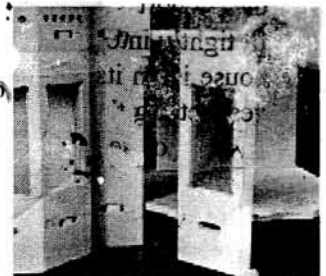
13. AXW10 begins the tower portion of the house, and fits in between AXW2 and the side of the tower. Slide into place and make sure it fits flush with AXW9. This will ensure your tower begins correctly.



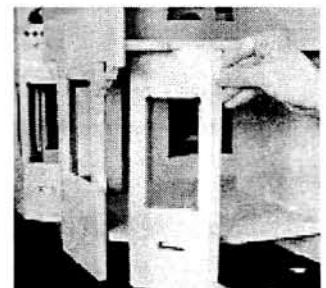
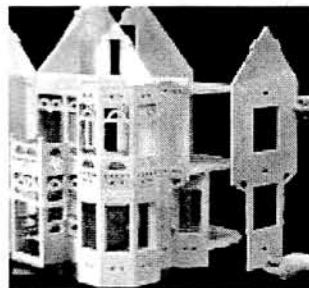
14. At this point, it is necessary to position the house right side up. To complete the tower, take your five AXW11 and place them around the house using the tabs and the pictures as a guide. The angles face into the house. Tape as you go.



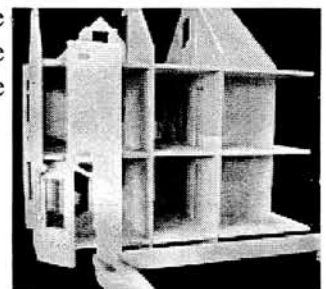
15. Next, fit one AXW14 into place as shown.



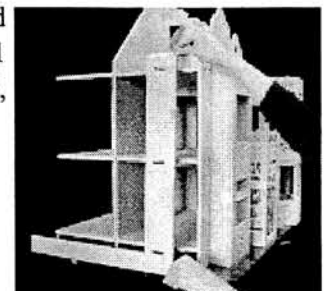
16. Then, fit AXW15 into place followed by the other AXW14.



17. To complete the back of the house, fit AXW16 into place using the tabs and slots. Tape into place.



18. To finish the walls and floors of the house, fit AXW1 into place. As with AXW16, use the tabs for positioning.



You are now done assembling the walls and floors Congratulations – your house is really taking shape! You may now run a bead of glue along the slots and tabs to finish the house, or disassemble and paint prior to final assembly.

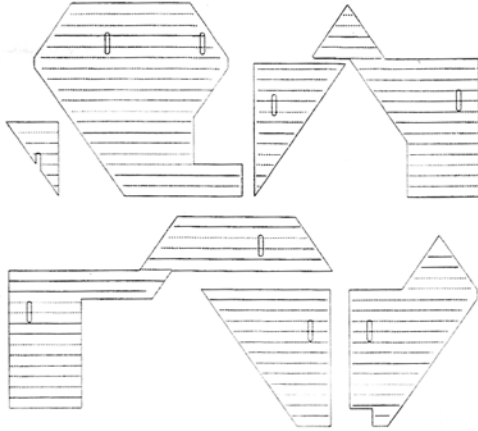
Next, we move to the roof!

ROOF CONSTRUCTION TIPS

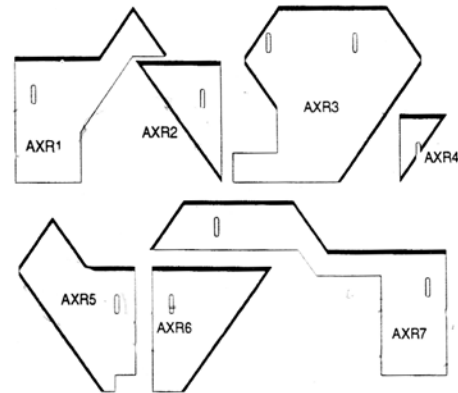
Prepare Roof for Shaking Prior to Assembly. We have found it much easier to draw lines on the roof parts for shaking prior to assembling the roof. In order to do this, start at the bottom edge of each roof piece and measure up $\frac{7}{8}$ of an inch at both the right and left edges. Using a straight edge, mark a horizontal pencil line all the way across the

piece. Then repeat the process every $\frac{7}{8}$ inch until you reach the top of the piece. (The tower cone has lines pre punched into each of them to assist in this process)

The following illustrations show the roof pieces and the proper orientation for shake lines:



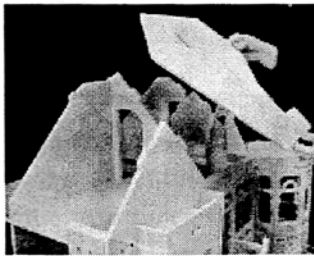
Shake Lines Will Show After Assembly



Shake Lines Down

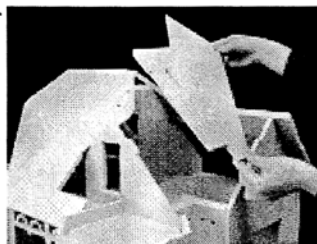
ROOF ASSEMBLY

1. Begin the roof with AXR3. Position the roof (angle side down) as shown using the tabs for guidance. If you have secured a good fit with the walls and floors, the roof will assemble quite easily. Each slot has been left with some “play” to allow you to adjust the roof slightly to ensure the best fit. *The shake lines will be visible after the part is in place.*

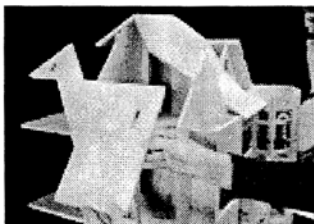


2. Next, place AXR7 into place. At this point, square both AXR3 and AXR7 and tape them together. This will help with alignment as you continue to build the roof.

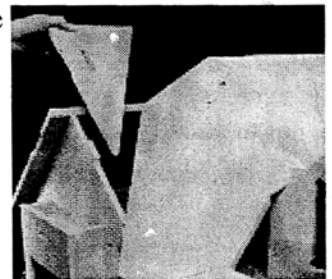
3. AXR5 is the next portion of the roof to assembly. Use the tabs and align the part with both AXR3 and AXR7. Tape them together.



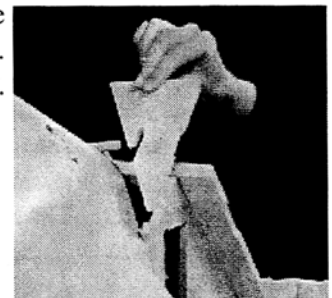
4. Go to the other side of the roof and put AXR1 into place. Square and tape.



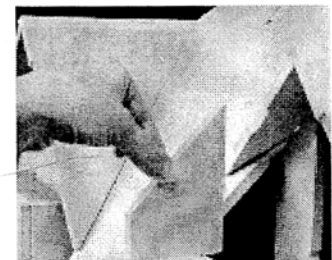
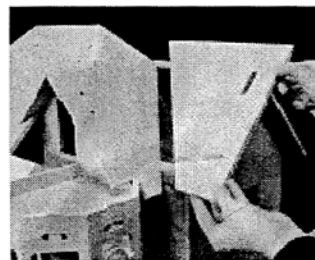
5. Finish the large front gable with AXR2.



6. Finish the small front gable by fitting AXR4 into place. Tape as with the other pieces.



7. AXR6 finishes the side gable and completes the roof! To finish the shell of the house, merely fit AXW5 into place.



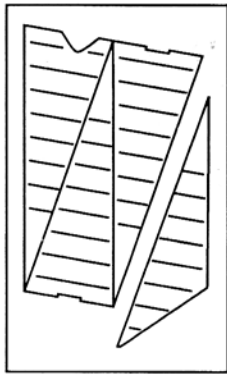
You have now completed the entire shell of the house!

PLYWOOD CONSTRUCTION TIPS

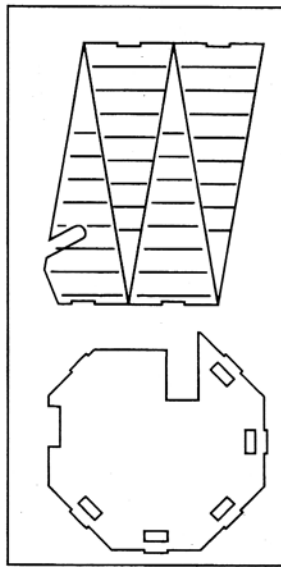
1. Release Parts Gently. Parts in the 1/8" plywood boards must be removed by exerting gentle pressure. If the piece cannot be removed easily in this manner you may carefully cut it with a utility knife. Cut from the front side of the board where the cut lines are clearly visible

2. Sanding. After removing the parts from the plywood boards, sanding may be necessary. Use a fine sand paper and sand to desired level of smoothness.

TOWER



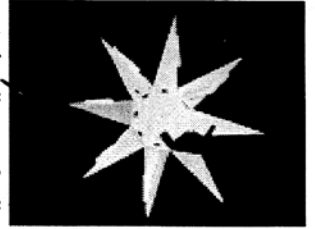
AXC



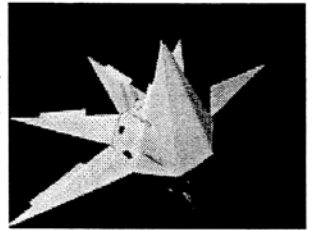
AXD

TOWER ASSEMBLY

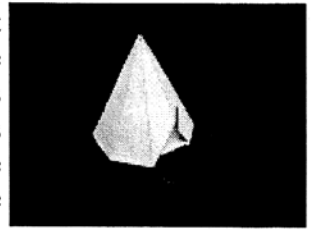
After punching and sanding all 9 tower pieces, lay the tower roof pieces with the lined side down on your work surface. Tape the roof pieces together as shown in the illustration. Be careful to layout the tower pieces as shown...the order is important.



Next, bring each tower piece up and tape them together. Work your way around the tower until the cone is finished.



Next, glue the tower support piece securely into place. The tower support piece not only adds stability to the cone, but comes complete with slots, which are used to correctly orient the cone on to the tower of the house.

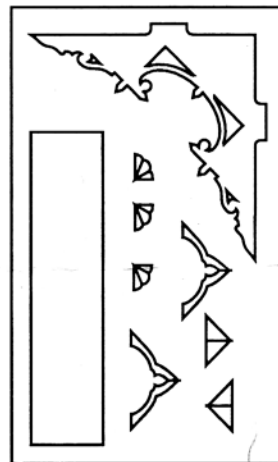


Run a generous bead of glue all the way around the tower support piece. Hold this piece upside down until the glue dries.

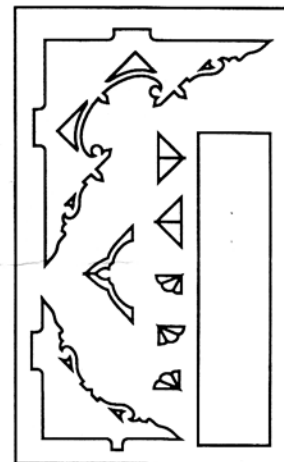
Finally, with this cone standing upright on its large end, run a bead of glue down each joint between pieces. Tape the top ends of the cone together so they do not inadvertently spread apart. Let the glue dry.

GABLE PARTS & ASSEMBLY

After punching out each part for the gable decorations, sand to the desired level of smoothness, and assemble. Use the box as your guide. After allowing the glue to dry, use the tabs to align the decorations into the proper gable on the roof. Again, use the box as a guide.



AXA



AXB

MDF TRIM CONSTRUCTION TIPS

1. Carefully Follow Instructions. There are many trim pieces, which make the Alexandria the one of a kind dollhouse it is. Follow the instructions carefully, don't skip steps, identify each part prior to starting, and dry fit each piece prior to gluing permanently.

2. Identify Parts Prior to Assembly. The unique ornamentation that makes the Alexandria unlike any other dollhouse, means there are many trim pieces to assemble. In order to aid in assembly, use the parts inventory list and a tape measure to identify and sort the trim by type.

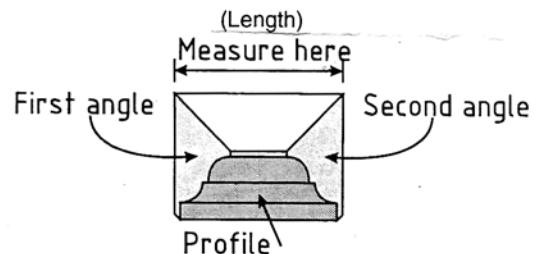
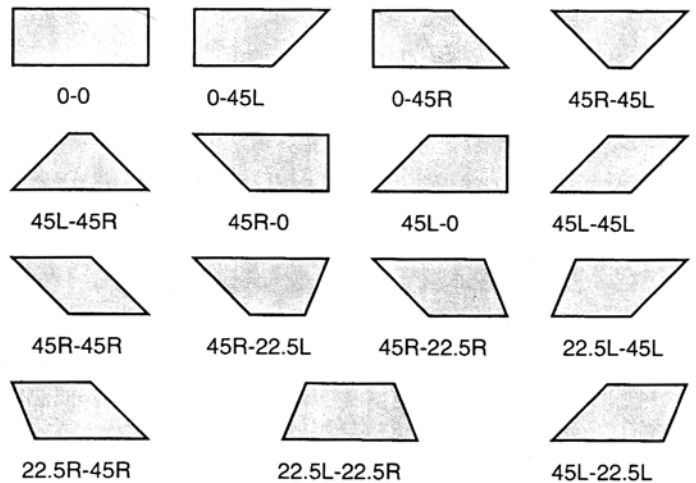
Part #	Angles and Length	Qty.
5-175		
AXT1	0-45R-3 ¹ / ₂ "	[3]
AXT2	45L-45L-2 ¹³ / ₁₆ "	[3]
AXT3	45R-45R-2 ⁷ / ₁₆ "	[3]
AXT4	45L-45R-7"	[3]
AXT5	45L-45L-2 ⁷ / ₁₆ "	[3]
AXT6	45R-45L-2 ⁵ / ₁₆ "	[2]
AXT7	45R-45R-3 ⁵ / ₈ "	[2]
AXT8	45L-0- ⁹ / ₁₆ "	[1]
AXT9	0-45R- ⁹ / ₁₆ "	[1]
AXT10	45L-45L-3 ⁵ / ₈ "	[2]
AXT11	45R-45L-5 5 ¹ / ₁₆ "	[2]
AXT12	45R-22.5R-2 ³ / ₈ "	[2]
AXT13	22.5L-22.5R-3 ⁵ / ₈ "	[14]
AXT14	22.5L-45L-7 ⁷ / ₈ "	[2]
AXT15	45R-22.5L-2 ¹¹ / ₁₆ "	[1]
AXT16	22.5R-45R-3 ⁷ / ₈ "	[1]
AXT17	0-0-6 ⁹ / ₁₆ "	[1]
AXT18	45R-45L-3 ¹¹ / ₁₆ "	[1]
AXT19	0-0-2 ⁷ / ₁₆ "	[1]
AXT22	45L-45R-6 ¹ / ₈ "	[1]
AXT23	45R-45L-2 ¹ / ₂ "	[1]
AXT24	45R-45R-3 ¹ / ₁₆ "	[2]
AXT25	45L-45R-12 ¹ / ₂ "	[2]
AXT26	45L-0-5 ¹ / ₂ "	[2]
AXT27	45R-0-13 ³ / ₄ "	[1]
AXT28	0-22.5R-7 ⁷ / ₈ "	[1]
AXT29	22.5L-45L-3 ⁷ / ₈ "	[1]
AXT30	0-45L-2 ¹ / ₂ "	[1]
5-175A		
AXT31	0-45R-1 ⁵ / ₈ " 2"	[1]
AXT32	45L-45R-2 ¹ / ₈ " 6"	[1]
AXT33	45L-0-1 ⁵ / ₈ " 2"	[1]
5-154		
AXT34	0-45L-11"	[1]
AXT35	45R-0-11"	[1]
AXT36	0-45L-5 ¹ / ₁₆ "	[1]
AXT37	45R-0-4 ¹ / ₄ "	[1]
AXT38	0-45L-10 ⁷ / ₈ "	[1]
AXT39	45R-0-10 ⁷ / ₈ "	[1]
5-3		
AXT40	24"	[3]
5-20		
AXT41	24"	[2]

3. Sand to Fit. Due to the number of trim pieces, different angles, and variation in MDF, some sanding may be necessary to fit the trim around the house. We suggest dry fitting each piece prior to gluing to ensure a good fit.

4. Use the Box as a Guide. Along with the schematic guides provided for the placement of the 5-175 trim, the box is an invaluable guide when placing trim on the house.

To help identify the proper trim pieces and the angle orientation, we have included a chart illustrating a sample of each angled part. In order to identify each part in the kit, look at the top of the part, identify the first angle and then the second angle, and finish by measuring the length of the part.

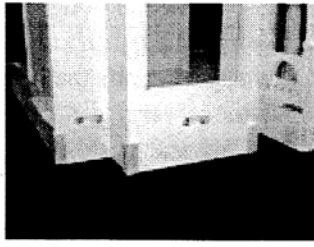
For example, AXT4 is described in the parts list as "45L-45R-7." For this part, the first angle is 45 degrees to the left, the second angle is 45 degrees to the right, and the part is 7 inches long.



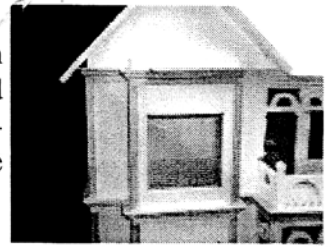
See page 11 for illustrations.

TRIM ASSEMBLY

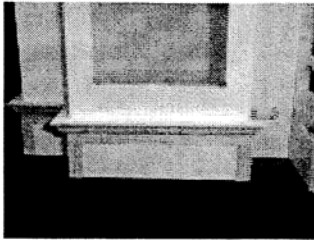
When assembling the main body trim (5-175), it is helpful to first put the corner trim (5-8) in its place. It will help square the main trim, as well as act as a guide for the correct height to place the trim.



After completing the first level of trim, repeat the process with both the second and third floors, using the corner molding to square and guide the placement of the main trim.

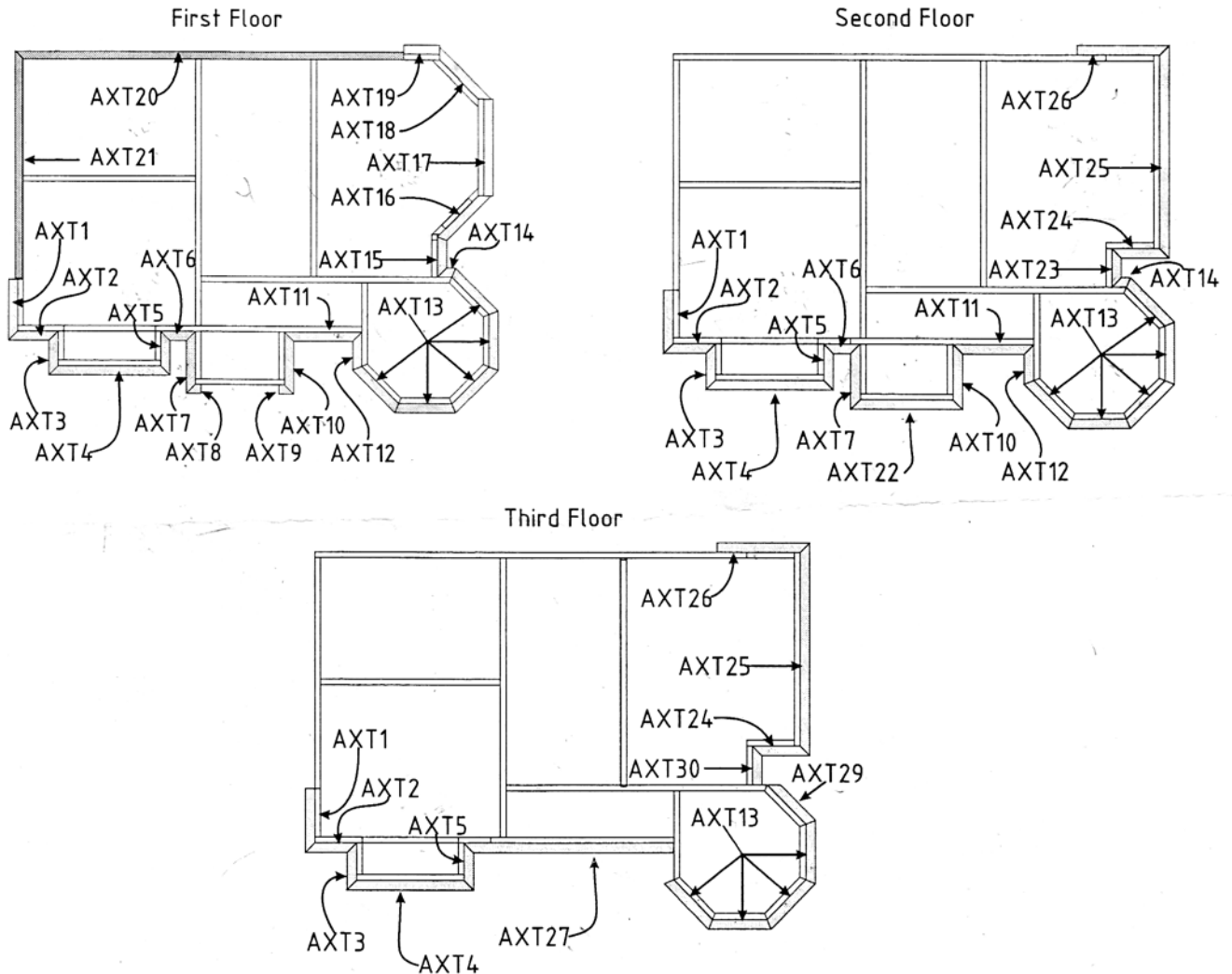


When placed properly, the main trim (5-175) will cover the slots used for construction.



For the rest of the trim, the box can be used as a guide.

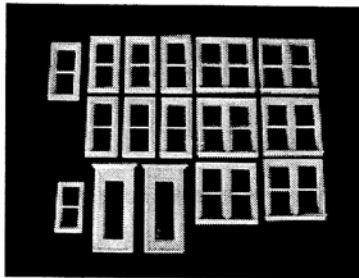
To assist with part identification and assembling the main body trim (5-175), we have provided detailed maps, which identify the correct trim placement by floor. For example, the first floor map corresponds to the first level of 5-175 trim. Be sure to follow each map carefully, measure and identify each part before assembling, and dry fit before gluing.



WINDOWS & DOORS ASSEMBLY

The windows and doors come pre-assembled for your convenience. For ease and quality of painting, we suggest pre-painting the windows and doors prior to assembly.

- Doors [2]
- Double Windows [6]
- Single Windows [7]
- Attic Window [1]



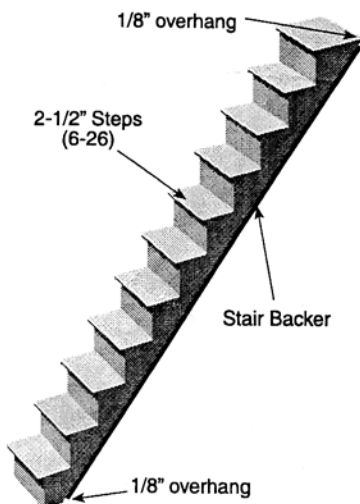
After dry fitting the windows and doors, merely run a bead of glue along each side and fit the window or door into the corresponding wall opening(s). To finish assembly, after gluing the windows and doors in place, you may measure and cut universal trim (5-3) to trim the interior of the house, if you wish. We have included extra trim for this purpose.

INSIDE STAIRS

Locate 11 stairs (6-26) and a stair backer ($\frac{1}{8}$ " plywood). Using the illustration as a guide, begin at the bottom of the stair backer and glue each stair in position until you reach the top. Notice that the first step and the last step are approximately $\frac{1}{8}$ " off the end of the backer.

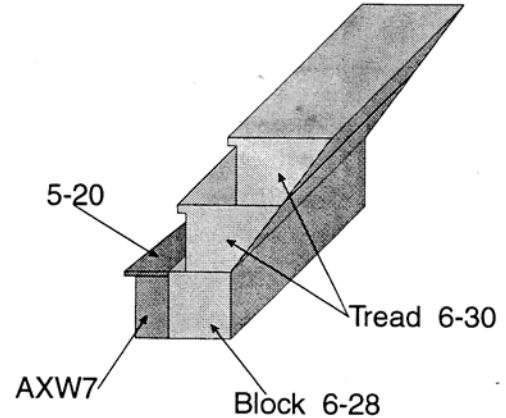
When the glue is dry, glue the completed stairway in place with the top step inside the stairwell hole and flush with the top of the second floor. Paint before gluing.

Repeat the entire process for the next stairway.



PORCH STAIRS

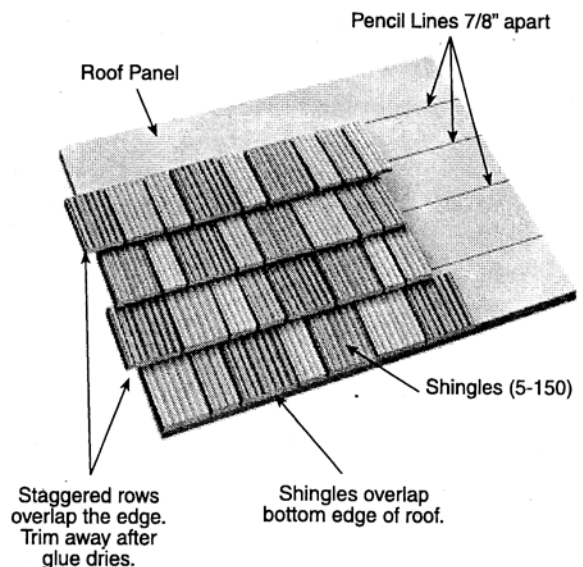
Locate the 2 porch stairs (6-30), and the porch block (6-28). Glue the porch block into place first (AXW7), and then glue the stairs together. When the glue dries, glue the two stairs inside the porch as shown on the box. Finish the stairs by cutting a piece of 5-20 to fit over the edge of AXW7 and flush with the porch block.



ROOF SHINGLES (SHAKES)

IMPORTANT: Building a perfect shake roof requires an understanding of the methods used by roofers in the real world. Shakes are not uniform in width and color, so you need to apply them with these natural variables in mind. We have gone to great trouble to ensure that you receive a suitable variety of widths and colors. If you create your dollhouse roof with care, it will have a truly authentic look.

Look at the illustration. The first thing you will notice is the appearance of randomness. This is exactly how professional roofers arrange shakes. While making your dollhouse roof, you should keep a constant eye toward mixing up the colors and widths. Even more important, the spaces between the shakes are arranged so that no space lines up with a space in the row below it.

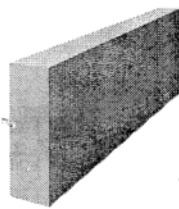


Beginning at the bottom edge of each piece, glue a full row of shingles (5-150) with the top edge of the shingles on the edge of the first line you drew on the part. The bottom edge of the shingle will hang over the bottom edge of the roof. When the bottom row is complete, begin the next row and work your way to the top. Repeat the process for each piece. Make sure you orient each piece prior to beginning to make sure you are starting at the bottom of each piece.

At straight roof edges, overlap the edge with the shingles. When the glue is completely dry, you can easily trim the shingles flush with the roof edge. In valleys and where the roof edges are angled, you must cut shingles to fit the angle prior to gluing.

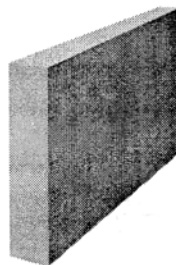
When you have completed the main roof pieces, do the tower roof.

Part No. 5-3



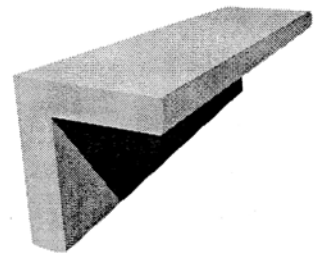
Universal Trim (3/8")

Part No. 5-20



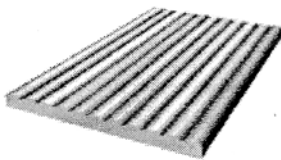
Universal Trim (5/8")

Part No. 5-8



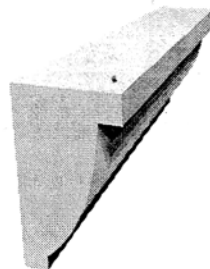
Corner Molding

Part No. 5-150



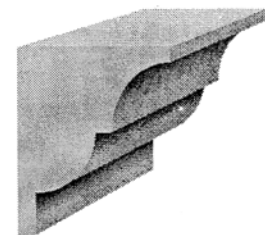
Plain Shakes
(Shingles)

Part No. 5-154



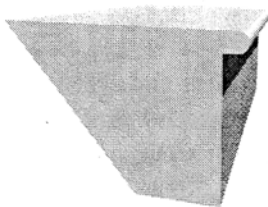
Cornice/Sill Molding

Part No. 5-175



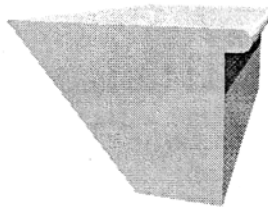
Profile

Part No. 6-26



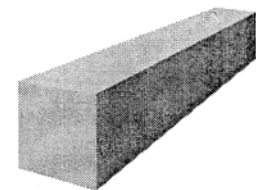
Steps 2.5"

Part No. 6-30



Steps 5^{5/16}"

Part No. 6-28



Porch Block