

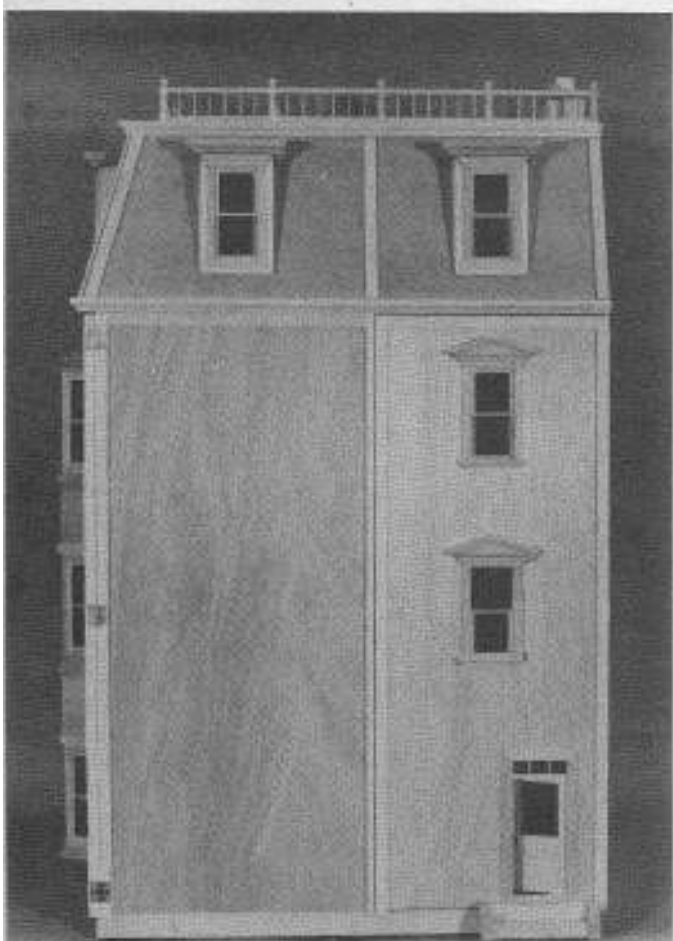
HOFCO® HOUSE, INC.
P. O. Box 103, 10822 Woodsboro Road
Woodsboro, Maryland 21798

Phone: (301) 898-7834

252

VICTORIAN TOWNHOUSE

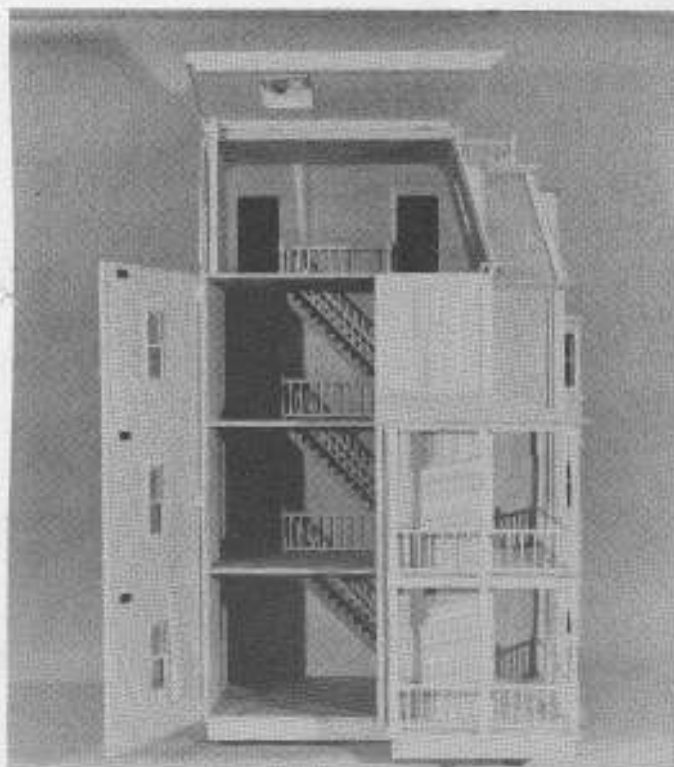
DIMENSIONS are 29" deep, 34½" length, & 45½" high. Shipped in 2 boxes. Small box weight is 10 pounds, large box weight is 68 pounds.



SIDING: 8 PKGS #1201

SHINGLES: 3 PKGS #1304 or #1306

FLOORING: 8 PKGS #1231-#1234



A Miniature World Of Distinction



VICTORIAN TOWNHOUSE
Scale Model House Kit #252

HOFCO HOUSE, INC.
P.O. Box 103
Woodstoro, Md. 21798

For "Customer Service" phone 1-800-638-2069 or 301-898-7834!

THE SCIENCE OF HOFCO HOUSE

Congratulations! You have purchased today's most advanced architecturally designed house kit available. Since 1977 HOFCO HOUSE has engineered and perfected the finest scale model houses. Our success is directly attributed to satisfying the precise needs and dreams of our customers. Our advanced innovations easily create a realistic and intriguing miniature heirloom that you and future generations will cherish forever.

HOFCO HOUSE delights in hearing from you. Please send us pictures of your completed house to record in the "HOFCO HOUSE HALL OF FAME."

HOFCO HOUSE, INC. WARRANTY

HOFCO HOUSE GUARANTEES ALL THEIR PRODUCTS! Every part must meet our high standards of quality before leaving our plant. Our research and development team scans the world market for the finest materials available. Sometimes a substitution is necessary. Any substitution of components will be of equal or better quality. If there is any problem with any of our products, please call or write directly to HOFCO HOUSE and request "Customer Service".

ASSEMBLY INSTRUCTIONS

1-PARTS LIST with approximate measurements

Identify location of parts by matching letters or numbers on photos or diagrams. To aid in identification, letters or names of parts are stamped on some of the parts. Quantity is indicated in "()" parenthesis. If quantity of part is not listed, only one part is included.

Example: Below in the first item "A" on the photo locates the Assembled Foundation & First Floor. There is only one part 26" x 32 1/2", but there are three parts "C1" Main House Floors 3/8" x 18 3/4" x 26 7/8".

As all measurements are given in inches, the sign ("") for inches has been omitted for ease in reading the numbers.

A Assembled Foundation & First Floor 26 x 32 1/2	B5 Front Wing Wall 3/8 x 12 x 30 1/8
B Walls	B6 Front Right Side Wall 3/8 x 14 1/8 x 30 5/8
B1 Wing Left Side Wall 3/8 x 6 3/4 x 30 5/8	B7 Front Wall 3/8 x 15 3/4 x 30 5/8
B2 Front Left Side Wall 3/8 x 7 3/4 x 30 1/4	B8 Back Wall 1/4 x 26 7/8 x 30 1/8
B3 Rear Left Side Wall 3/8 x 11 3/4 x 30 1/8	B9 Fourth Floor Rear Wall 1/4 x 9 3/4 x 27 1/2
B4 Rear Right Side Wall 3/8 x 11 3/4 x 30 1/8	

HOFCO® HOUSE, INC.

10822 WOODSBORO ROAD, P.O. BOX 103
WOODSBORO, MARYLAND 21798

"TIME SAVER ASSEMBLY TIPS FOR THE CUSTOMIZED HOUSE"

SIDING: #1201 Single Clapboard Siding Strips

It is easier to install the siding before you install the windows, doors, and porch roof. When the siding has reached the porch roof supports, install the roof and continue assembling your house.

ROOF COVERING: #1302 Square Butt Shingles for Colonial Styles...#1304 Fishscale for Victorian Styles...#1306 Octagon for Federal and Victorian Styles

You can install your cedar shingles at anytime during the construction of your house. To give a professional touch to your roof add roof molding and cap.

#1207 Roof Bottom Edge Molding...#1211 Pine Molding Strips for roof ends
...#1221 Cedar Roof Cap for finishing peak of roof

FLOOR COVERING: #1231 Walnut...#1232 Oak...#1233 Pine...#1234 Cherry

You may use hardwood flooring inside and masonry on the porches or any combination you wish. As glue will not adhere to masonry surfaces, you must work around the porch and railing posts or use a special glue. Also, you should consider the effect the added height or lack of it would do to the roof or other areas of the house!

MASONRY: Brick, stone, and stucco may be applied on the foundation at anytime after you have installed the porch steps. The porch floor overhangs about 3/16" to allow for any masonry work. It is easier to install masonry work to the sides and front of the chimney before you glue and nail it to the house. Then you can finish the back side around the roof peak after the chimney is installed.

DUSTPROOFING: #1270 and #1271 Plexi-glass Brackets

Plexi-glass is used to provide a see-through cover for the back of your house. Your local hardware store will cut the plexi-glass to your precise measurements. Use HOFCO HOUSE Plexi-glass Brackets for ease in removing and replacing your covering. The Plexi-glass slides in from the top. Install this special bracket before measuring the Plexi-glass for exact size. This cover gives dust-free and security protection for display.

PAINTING: Regular exterior latex primer and latex house paint in the colors of your choice is used. It is convenient to apply the paint with a small one-inch brush for larger areas and a smaller art brush for fine detailed painting. First, prime all areas that are to be painted. Then sand the areas with fine sandpaper...before painting the finishing coat in the color of your choice. Don't forget to paint the interior ceilings before wallpapering and the installation of any special floor covering.

ORDER OF DECORATION: If possible decorate the interior of your house in this order!

1-Install the electrical lighting using a wiring kit. 2-Paint your ceilings. 3-Lay and finish your hardwood flooring. 4-Stain or paint all interior trim including windows, doors, stairways, railings, and all moldings before gluing in place. 5-Wallpaper your walls. 6-Glue finish trims in place.

ADDITIONAL HOFCO HOUSE ACCESSORIES:

2003	Colonial "Transit" Door	2301	Assembled Left Hand Stairway (without railing)
2012	Victorian "Oval Panel" Door	2311	Assembled Stairway Railing (fits 2301)
2022	Colonial "Panel-lite" Door	2402	Short Newel Post (size 2 3/4" length x 7/16" width)
2032	French Door	2411	Porch Post (size 11" length x 1/2" width)
2102	Colonial Style Non-working window	2441	Wide Assembled Railing (24" L x 2 3/4" W)
2112	Colonial Style working window	2451	Narrow Assembled Railing (24" L x 1 3/4" W)
2122	Victorian Style Non-working window	2421	Fancy Dentel Trim (24" L x 3/8" W)
2132	Victorian Style working window	2431	Narrow Gingerbread Trim (24" L x 3/8" W)
2141	Octagon Window		

C Floors		J First & Second Floor Porch Wall Trim
C1 Main House Floors	(3) 3/8 x 18 3/4 x 26 7/8	J1 (4) 3/16 x 7/16 x 9 1/8
C2 Wing Floors	(3) 3/8 x 6 3/4 x 10 3/4	J2 (6) 3/16 x 5/8 x 9 1/8
C3 Side Porch Floors & Ceiling	(3) 3/8 x 5 1/4 x 12	K First & Second Floor Porch Roof Support Trim
C4 Front Porch Floors & Ceiling	(3) 3/8 x 5 1/4 x 16	K1 (2) 3/16 x 7/16 x 5 1/4
D Partitions:		K2 (2) 3/16 x 7/16 x 6 7/8
D1 First Floor Partitions		K3 (2) 3/16 x 7/16 x 16
	3/8 x 9 5/8 x 10 3/4 [1 doorway]	L First Floor Porch Edge Trim
	3/8 x 9 5/8 x 18 3/4 [1 doorway]	L1 3/16 x 3/8 x 5
D2 Second Floor Partitions		L2 3/16 x 3/8 x 5 7/16
	3/8 x 9 5/8 x 10 3/4	L3 3/16 x 3/8 x 10 1/2
	3/8 x 9 5/8 x 18 3/4 [2 doorways]	L4 3/16 x 3/8 x 12
D3 Third Floor Partitions		M Second & Third Floor Porch Edge Trim
	3/8 x 9 5/8 x 10 3/4	M1 3/16 x 5/8 x 5 7/16
	3/8 x 9 5/8 x 18 3/4 [2 doorways]	M2 (2) 3/16 x 5/8 x 12
D4 Fourth Floor Partitions		M3 (2) 3/16 x 5/8 x 21 1/2
	3/8 x 9 5/8 x 10 3/4 [French doorway]	N Left Side House Wall Trim
	3/8 x 9 5/8 x 18 1/2 [2 doorways]	N1 3/16 x 7/16 x 7 1/2
E Roof		N2 3/16 x 5/8 x 7 1/4
E1 Left Wing Side Roof	1/4 x 9 1/4 x 6 7/8	N3 3/16 x 5/8 x 10 5/8
E2 Right Wing Side Roof	1/4 x 9 1/4 x 14 3/8	N4 1/4 x 3/8 x 30 1/4
E3 Front Wing Side Roof	1/4 x 9 1/4 x 11 3/4	N5 3/16 x 5/8 x 30 1/4
E4 Front Side Roof	1/4 x 9 1/4 x 15 7/8	O Lower Roof Mouldings
E5 Rear Side Roof [Sliding]	1/4 x 9 1/4 x 11 5/8	O1 3/4 x 1 1/4 x 8 1/8
E6 Left Side Roof	1/4 x 9 1/4 x 19 3/8	O2 3/4 x 1 1/4 x 13
E7 Wing Roof Top	1/4 x 6 1/4 x 6 7/8	O3 3/4 x 1 1/4 x 17 1/2
E8 Main House Roof Top	1/4 x 16 3/4 x 22 1/2	O4 3/4 x 1 1/4 x 20 1/4
F Porch Roof & Supports		O5 3/4 x 1 1/4 x 27 1/4
F1 Side Roof Support	1/4 x 1 1/2 x 7 1/8	P Upper Roof Mouldings
F2 Front Roof Support	1/4 x 1 1/2 x 16	P1 3/4 x 1 1/4 x 8 1/8
F3 Side Porch Roof	1/4 x 6 3/8 x 13 1/2	P2 3/4 x 1 1/4 x 8 3/8
F4 Front Porch Roof	1/4 x 6 3/8 x 22 1/4	P3 3/4 x 1 1/4 x 17 1/2
G Porch Steps (2)		P4 3/4 x 1 1/4 x 18
G2 Porch Step Filler Strip	1/8 x 1 1/4 x 6	P5 3/4 x 1 1/4 x 25 1/8
H Chimneys (2)		Q Third Floor Wall Trim
H2 Chimney Tops (2)		Q1 3/16 x 7/16 x 7 1/2
I Porch Posts (12)		Q2 3/16 x 5/8 x 7 1/2
I2 Porch Post Bases (8)		Q3 3/16 x 5/8 x 16
I3 Porch Post Bases - Specially Cut (4)		R Left Side Wing Wall Trim
		R1 3/16 x 5/8 x 5 3/4
		R2 3/16 x 5/8 x 30 3/8
		S Right Side House Wall Trim
		S1 3/16 x 5/8 x 10 5/8
		S2 3/16 x 5/8 x 13
		S3 1/4 x 3/8 x 30 3/8
		S4 3/16 x 5/8 x 30 1/4
		S5 3/16 x 5/8 x 30 3/8
		T Front Wall Wing Trim
		T1 3/16 x 5/8 x 10 7/8
		T2 (2) 3/16 x 5/8 x 30 1/4

- U Rear Wall House Trim
 U1 (2) 3/16 x 5/8 x 9 1/8
 U2 (2) 3/16 x 5/8 x 30 1/2
 V Fourth Floor Roof Trim
 (3) 3/16 x 5/8 x 8 7/8
 W Fourth Floor Roof Corner Trim
 3/16 x 7/16 x 9 1/4
 (6) 3/16 x 5/8 x 9 1/4
 X Top Roof Trim
 X1 1/8 x 3/4 x 5 7/8
 X2 1/8 x 3/4 x 16 3/4
 Under Top Roof Trim
 X3 1/4 x 3/4 x 5 7/8
 X4 1/4 x 3/4 x 16 1/4
 Y Side Porch Eave
 3/16 x 2 1/4 x 5 1/2
 Z Side Roof Prop
 (2) 3/16 x 7/16 x 10 1/2

First Floor Porch Railing

- #1 2 3/4 x 4
 #2 2 3/4 x 4 3/8
 #3 2 3/4 x 4 1/2
 #4 2 3/4 x 4 7/8
 #5 (2) 2 3/4 x 5 3/8

Second Floor Porch Railing

- #6 2 3/4 x 4
 #7 2 3/4 x 4 3/8
 #8 2 3/4 x 4 1/2
 #9 2 3/4 x 4 7/8
 #10 2 3/4 x 5
 #11 (2) 2 3/4 x 5 3/8

Second & Third Floor Interior Railing

- #12 (2) 2 3/4 x 9 7/8

Fourth Floor Interior Railing

- #13 2 3/4 x 3
 #14 2 3/4 x 7 3/4

Roof Top Railing

- #15 (3) 1 3/4 x 5 1/8
 #16 (4) 1 3/4 x 5 1/4
 #17 1 3/4 x 5 3/8
 #18 1 3/4 x 5 7/8
 #19 (2) 1 3/4 x 7 1/4

Roof Top Short Newel Post (12)

Interior Newel Post (2)

Interior Spacer Newel Post (5)

- Porch Newel Post (4)
 Interior Stairways (3)
 Interior Stairway Railings (3)
 Dormers (5)
 Dormer Tops (5)
 Working Doors
 Front Door
 French Door
 Rear Door
 Working Windows
 Dormer Windows (5)
 Victorian Windows (6)
 Bay Windows
 Small Middle Bay
 Full Bay (2)

Bay Filler Sections

- #20 (4) 2 1/8 x 3 1/8
 #21 (2) 5 1/4 x 3 1/8
 #22 (4) 2 x 7 3/4

Magnetic Catches (9)

Hinges with screws (13)

Nail Bag

Sandpaper

Instructions

Supplies and Tools Needed

Hammer

Screwdriver

Small Nail-set or Punch

Ruler and Large Carpenter's Square

Wood Chisel

Pencil

Paper Towels

Standard Woodworking Glue

Silicone Rubber (Optional)

Standard Wood Putty

Pliers

Customized Accessory List

Clapboard Siding to cover 1900 to 2000 square inches

Roof Shingles to cover 900 square inches

Brick or Stone to cover foundation and chimneys - 200 square inches

Interior Flooring for 4 floors to cover 2375 to 2450 square inches

Porch Flooring to cover 350 square inches

2-General Directions

Read through each assembly direction and examine the corresponding photo thoroughly before applying glue or nailing. This allows you to become familiar with the construction techniques.

Apply glue moderately to all parts to be joined together including those that are nailed. Nail wherever you think necessary. Always keep nails straight! Don't worry about any exposed nails in your house. After the glue has dried, punch the exposed nails out! Glue alone will secure the two parts. The main function of the nails is to hold the two parts together while the glue dries.

Follow the letters, numbers, diagrams, and photos to be sure you are using the correct parts!

Read the "Time Saver Assembly Tips for the Customized House" before beginning the basic construction. You will save yourself time and money in later improvements. Assemble your house in the order suggested for a professional collectors item. Have patience and your efforts will be forever rewarded!

Robert C. Holweck, President
Robert C. Holweck
President

3-Wing Left Side Wall - Part B1 Photo's #1, #2, & #3

Note: It is helpful to set pieces in place before applying glue to become familiar with the instructions!

A-Important! Place the grooved side at the top and facing the interior floor area for future installation of the lower roof moulding and place wall on foundation flush with inside corner and slightly overhanging front edge.

B-Glue and nail in place with 1 inch paneling nails. Use your square for proper alignment.

4-Front Wall - Part B7 Photo's #4, #5, & #6

A-Make sure the grooved side is at the top and facing the interior floor area! Place wall on foundation flush with the existing wall at the corner and even at the opposite end.

B-Glue and nail all contacting edges with 3/4 inch wire brads on the walls and 1 inch paneling nails on the floor. Make sure walls are square with the first floor.

5-Front Left Side Wall - Part B2 Photo's #7, #8, & #9

A-Place wall against front wall at corner. Glue and nail as above.

6-Front Right Side Wall - Part B6 Photo's #10, #11, #12, & #13

A-Make sure the grooved side is at the top and facing the interior floor area! Place wall with the exact same overhang as Part B1 - Wing Left Side Wall.

B-Using Part C1 - Main House Floor as a temporary support and squaring device, glue and nail with 1 inch paneling nails.

7-Main House Floors - Parts C1 (3) Photo's #14, & #15

A-Stack all floors temporarily with printed arrows down and pointing to front wall.

B-Align all floors evenly with first floor.

C-With pencil make a sharp line where front left side wall ends. This line will help in the installation of each floor with the side of Front Right Side Wall-(B6)

8-Main House Floor and Wing Floor (Second Floor) - Parts C1 & C2 Photo's #16, #17, #18, #19, #20

A-Important! It is vital to place stairway opening correctly! The distance from #21, #22 the Front Right Side Wall - Part B6 to the stairway opening is about 11 1/8 inches and the distance to the Front Wall - Part B7 is about 6 3/4 inches. Check your measurements!

8B-Mark nail placement on walls in the center of the floor to prevent splitting floor! Always tap nails in straight!

C-Place a partition against the front and side walls of house. The partitions will serve as temporary support and as a height gauge.

D-Apply glue on three contacting sides of floor & line of pencil mark with part B6.

E-Slide in the second floor from the back with the stairway opening placed correctly!

F-Nail in place using 3/4 inch wire brads or 1 inch paneling nails.

G-Using partitions as a height gauge place the smaller second floor snug against the larger second floor and allow a slight recess of the front walls. Glue and nail.

9-First Floor Partitions - Parts D1 Photo's #23, #24, & #26

Note: Use your ruler and square on all partitions! It is helpful to set pieces in place before applying glue to become familiar with the instructions!

A- Glue all contacting edges of the smaller partition and place about 12 inches from the back with the doorway towards the stairway opening. Nail with 3/4 inch wire brads or place heavy objects above it to hold parts firm.

B-Glue larger partition in line with Wing Left Side Wall - Part B1 and stairway opening with doorway opening to the front. Glue and nail as above.

10-Main House Floor and Wing Floor (Third Floor) - Parts C1 and C2 Photo's #27, #28, & #29

A-Follow procedures as in step 8.

11-Second Floor Partitions - Parts D2 Photo's #30, #31, #32, #33, & #34

A-Use the same procedures as in step 9 except the placement of the doorway openings. Observe the differences in the photos.

12-Main House Floor and Wing Floor (Fourth Floor) - Parts C1 and C2 Photo's #35, #36, & #37

A-Follow procedures as in step 8.

13-Third Floor Partitions - Parts D3 Photo's #35, #36, #38, & #39

A-Follow procedures as in steps 9 and 11.

14-Back Wall - Part B8 Photo's #40, #41, & #42

Important! This procedure will align, square, and stabilize your house!

A-Mark nail placement on Back Wall in the center of the floor to prevent splitting of floors.

B-Glue all contacting edges.

C-Place Back Wall on foundation flush with first floor. Nail with 1 inch paneling nails.

D-Use fourth floor partitions as height gauges for second and third floors. Align floors flush with Back Wall and nail as above.

E-The fourth floor will be higher than the Back Wall. Therefore align sides flush and nail with 3/4 inch wire brads.

15-Fourth Floor Rear Wall - Part B9 Photo's #45, #46, & #47

A-Place and center Fourth Floor Rear Wall directly on top of Back Wall edge.

B-Glue and nail using 3/4 inch wire brads directly into fourth floor.

16-Lower Roof Mouldings - Parts O1, O3 and O5 Photo's #48, #49, #50, #51, #52, #53, #54, & #55

A-Remove obstruction at inside corner of Wing Left Side Wall - Part B1 with the use of a chisel to allow placement of Lower Roof Mouldings.

B-Generously apply glue in groove of mouldings - Parts O1 and O3 and press firmly in place. Adjust angles for proper alignment. Be certain corner is square and nail if necessary with 3/4 inch wire brads.

C-Generously apply glue in groove of Part O5 and contacting edges of Floor and Fourth Floor Rear Wall.

D-Using your carpenter's square make certain points of Parts O1 and O5 are square to allow for future proper alignment of roof flap. Nail if necessary with 3/4 inch wire brads.

- 17-Fourth Floor Partitions - Parts D4 Photo's #56, #57, & #57
 A-Glue all contacting edges of the smaller partition and place about 12 inches from the back with the doorway towards the stairway opening.
 B-Glue larger partition in line with stairway opening and flush with Fourth Floor Rear Wall.
- 18-Left Wing Side Roof and Front Side Roof - Parts E1 and E4 Photo's #59, #60, & #61
 Important! Dormer Opening must be directly over third floor window opening!
 A- Generously apply glue in all contacting edges.
 B-Place in groove and align parts evenly.
 C-Nail with 1/2 inch wire brads.
- 19-Right Wing Side Roof - Part E2 Photo's #62, #63, & #64
 A-Generously apply glue to all contacting edges.
 B-Place in groove and using your carpenter's square make certain the lower points of E1 and E2 are square to allow for future proper alignment of roof flap. Nail if necessary with 3/4 inch wire brads.
- 20-Upper Roof Mouldings - Parts P1 and P3 Photo's #65, #66
 A-Place glue on all contacting edges and set in place as shown in photos.
- 21-Upper Roof Moulding - Part P5 Photo's #67, #68, & #69
 A-Generously apply glue to all contacting edges.
 B-Place in groove and using your carpenter's square make certain the points of P1 and P5 are square to allow for future proper alignment of roof flap. Nail if necessary with 3/4 inch wire brads.
- 22-Front Wing Side Roof - Part E3 Photo #70
 A-Temporarily tack Part E3 in place to allow for proper alignment.
- 23-Rear Side Roof - Part E5 Photo #69
 A-Slide in grooves from the rear to test for proper functioning. Sand and adjust if necessary.
- 24-Wing Roof Top and Main House Roof Top - Parts E7 and E8 Photo's #71, #72, #73, #74, & #75
 A-Generously glue all contacting edges and insert into grooves of roof top.
 B-Center roof top with Fourth Floor Rear Wall and using your carpenter's square be certain that Parts P3 and P5 are square.
 C- Insert Wing Roof Top and make certain all points of roof tops and mouldings are square.
 D-Nail wherever necessary with 1/2 inch and 3/4 inch wire brads.
- 25-First Floor Porch - Parts C3 and C4 Photo's #76, #77, #78, & #79
 A-Glue and nail front porch flush with the walls of the house with 3/4 inch wire brads.
 B-Glue and nail side porch flush with Side Wall and the edge of the First Floor Porch.
 C-Glue and nail with 3/4 wire brads.
- 26-First Floor Porch Edge Trim and Porch Steps - Parts L and G Photo's #80, #81, & #82
 Note: Glue and nail all trims with 1/2" wire brads.
 A-Select all the First Floor Porch Edge Trim. Using the photos figure out where the pieces fit around the edge of the porch.
 B-The Porch Step Filler Strip fits between Parts L1 and L3. Glue and nail with 3/4 inch wire brads.
 C-The Porch Steps mount on the Porch Step Filler Strip and between L1 and L3. Glue and nail with 1 inch paneling nails.
- 27-First Floor Porch Wall Trim and First Floor Porch Roof Support - Parts J and K
 Photos #83, #84, #85, & #86
 A-Reserve one piece of Part J to serve as a height gauge to install the Porch Roof Support Trim.
 B-Place Parts J1 on all the inner corners. Glue and nail.

27C-Place Parts J2 on all outer corners. Glue and nail.

D-Select all Porch Roof Support Trim. Using the photos, set them in place to become familiar with the proper installation. The length of each part makes it easy to identify the correct placement.

E-Using the reserved Part J as a height gauge, glue and nail each part.

F-Glue and nail Part J as above.

28-Nail Setting of Porch Area Photo #87

Note: It is easier to nail-set and putty your First Floor Porch Area before the Second Floor Porch is installed.

A-Inset nails with a nail punch.

B-Fill holes with standard wood putty.

C-Sand smooth with sandpaper.

29-Assembling Porch Posts - Parts I Photo's #88, & #89

Note: There are 4 specially cut Porch Post Bases that are designed to fit flush against Porch Wall Trim - Parts J2.

A-Apply glue to the flat end of the 3 inch long square section of the porch post.

B-Center the four specially cut porch post bases on posts with the cut side flush with posts.

C-Press firmly together and nail with 3/4 inch wire brads.

D-Center remaining eight post bases on posts.

30-Second Floor Porch - Parts C3 and C4 Photo's #90, #91

A-Select second floor porch sections and set them in place to become familiar with proper installation. Use the porch posts to hold the porch roof temporarily in place.

B-Glue and nail front second floor porch section with 3/4 inch brads along walls.

C-Glue and nail side second floor porch section with 3/4 inch brads along wall.

31-Installing Porch Posts - Parts I Photo's #92, & #93

A-Glue all contacting edges of porch posts.

B-Place porch posts at corners and two of the specially cut porch bases flush with trim part J2.

Important! Porch posts must be properly aligned for later installation of porch railing.

C-Nail at an angle through post base at bottom using 3/4 inch wire brads. Check for squareness!

D-To nail top of post, nail through porch trim using 1 inch paneling nails.

E-Center one porch post on the joint of the second floor porch floor.

F-Center one porch post between the two corner porch posts on the side porch.

32-Second Floor Porch Edge Trim - Parts M Photo's #94, & #95

A-Select all the Second Floor Porch Edge Trim. Using the photos, figure out where the pieces fit around the edge of the porch.

B-Glue and nail in place with 1/2 inch wire brads.

33-Second Floor Wall and Second Floor Porch Roof Support - Parts J and K Photo's #96, #97, #98

A-Use the same procedures as in step 27.

34-Nail Setting of Second Floor Porch Area Photo's #98, & #99

A-Use the same procedures as in step 28.

35-Side Porch Ceiling and Front Porch Ceiling - Parts C3 and C4 Photo's #100, #101

A-Use the same procedures as in step 30.

36-Installing Second Floor Porch Posts - Parts I Photo's #102, & #103

A-Use the same procedures as in step 31.

- 37-Third Floor Porch Edge Trim - Parts M2 and M3 Photo #104
A-Same procedure as in step 32 except there is no M1 part.
- 38-Side and Front Roof Supports - Parts F1 and F2 Photo's #105, & #106
A-Set supports directly on top of porch ceiling and against wall.
B-Glue and nail in place with 1/2" wire brads.
- 39-Rear Wall House Trim - Parts U2 Photo's #107, #108, & #109
A-Generously glue Rear Wall House Trim and place flush with the side edge and with an overhang of about 1/8 inch below Back Wall.
B-Nail with 1/2" wire brads.
- 40-Right Side House Wall Trim - Part S5 Photo's #110, & #111
A-Generously glue Right Side House Wall Trim and place flush with the side edge and also flush against the Lower Roof Moulding on the Front Right Side Wall.
B-Nail with 1/2 inch wire brads.
- 41-Left Side wing Wall Trim - Part R2 Photo #112
A-Generously glue Left Side House Wall Trim and place flush with the side edge and also flush against the Lower Roof Moulding on the Wing Left Side Wall.
B-Nail with 1/2 inch wire brads.
- 42-Side and Front Porch Roof - Parts F3 and F4 Photo's #113, #114, & #115
A-Set parts in place to become familiar with the installation.
B-Glue all contacting edges and nail with 3/4 inch wire brads.
- 43-Side Porch Eave - Part Y Photo's #116, & #117
A-Glue and nail with 1/2 inch wire brads as shown in photo.
- 44-Top Roof and Under Top Roof Trim - Parts X1, X2, X3 and X4 Photo's #118, #119, #120, #121, & #122
A-Remove Front Wing Side Roof E3 that was temporarily installed. #122
B-Place parts X3 and X4 flush with the edge under the roof. Glue and nail with 1/2 inch wire brads.
C-Place Top Roof Trim X1 and X2 recessed 1/16 inch from the front edge of roof. You will notice that part X2 will overhang the rear of the house about 1/4 inch. Glue and nail with 1/2 inch wire brads.
- 45-Nail Setting of Hinged Areas Photo #123
A-Use same procedures as in step 28.
- 46-Installation of Hinges on walls - Parts B3, B4 and B5 Photo's #125, #126, #127, #128, & #129
A-Position three hinges evenly across the edge of all three walls starting about one inch from each end. Center the middle hinge.
B-Punch screw holes with a nail punch or 1 inch paneling nail. Screw hinges in place.
C-Lay house in a horizontal position for easier installation.
D-Allow about 1/16 inch gap on all sides of wall.
E-Screw hinges in place.
- 47-Right Side House Wall Trim - Parts S1, S2, S3 and S4 Photo's #130, #131, #132, & #133
A-Glue and nail with 1/2 inch wire brads parts S1 and S4 on the edge of the Rear Right Side Wall.
B-Glue and nail with 1/2 inch wire brads parts S2 and S3 on the Front Right Side Wall. Make certain there is at least 1/16 inch gap between parts S3 and S4.
- 48-Magnetic Catches for Rear Right Side Wall - Part B4 Photo #134
A-Screw a catch under second, third and fourth floor about 1 inch from the Front Right Side Wall.
B-Screw plates in line with magnetic catches on Rear Right Side Wall.
- 49-Left Side House Wall Trim - Parts N3, N4 and N5 Photo's #135, #136, & #137
A-Glue and nail with 1/2 inch wire brads parts N3 and N5 on the edge of the Rear Left Side Wall.
B-Glue and nail with 1/2 inch wire brads part N4 on the Front Left Side Wall. Make certain there is about 1/16 inch gap between parts N4 and N5.

- 50-Magnetic Catches for Rear Left Side Wall Photo #138
 A-Screw a catch under second, third and fourth floor about 1 inch from the Front Left Side Wall.
 B-Screw plates in line with magnetic catches on Rear Left Side Wall.
- 51-Front Wall Wing Trim - Part T2 Photo's #139, & #140
 A-Glue one T2 trim flush with front edge and overhanging at the back. Glue and nail as above.
 B-Glue other T2 trim flush with edge of other T2 trim.
- 52-Magnetic Catches for Front Wing Wall Photo #141
 A-Screw a catch under second, third and fourth floor about 1 inch from the Wing Left Side Wall.
 B-Screw plates in line with magnetic catches on Front Wing Wall.
- 53-Left Side House Wall Trim - Parts N1 and N2 Photo's #142
 A-Glue and nail as shown in photo.
- 54-Third Floor Wall Trim - Parts Q1, Q2 and Q3 Photo's #143, & #144
 A-Glue and nail as shown in photo.
- 55-Front Wing Side Roof and Upper Roof Moulding - Parts E3 and P2 Photo's #145, #146, & #147
 A-Apply glue to top edge of Front Wing Side Roof and insert in bottom groove of Upper Roof Moulding.
 B-To insure proper angle lay Front Wing Side Roof in place with Upper Roof Moulding and allow to dry.
 C-Remove Front Wing Side Roof and position two hinges on the Upper Roof Moulding starting about 1/2 inch from each end.
 D-Punch screw holes with a nail punch or 1 inch paneling nail and screw hinges in place.
 E-Set Front Wing Side Roof on house allowing 1/16 inch gap between mitered edges of mouldings to allow for painting and ease in opening.
 F-Screw other side of hinge in place as above. Check for proper alignment!
- 56-Lower Roof Moulding - Part O2 Photo's #145, & #147
 A-Set Lower Roof Moulding in place to check for proper alignment. Adjust if needed by sanding or trimming Front Wing Side Roof.
 B-Apply glue in groove of moulding and press firmly in place.
 C-Adjust angle for proper alignment. Allow to dry.
 D-If Lower Roof Moulding is slightly lower than the side mouldings, place as many sheets of sandpaper under hinge on roof top to correct level.
 E-Repeat if necessary on other hinge.
- 57-Rear Side Roof, Rear Wall House Trim and Fourth floor Roof Trim - Parts E5, U1 and V Photo's #148, & #149
 A-Glue and nail Rear Wall House Trim to the back edge of Rear Side Roof.
 B-Glue and nail one Fourth Floor Roof Trim flush with the Rear Wall House Trim. Make sure the Rear Side Roof can slide smoothly. Sand if necessary.
 C-Attach other Fourth Floor Roof Trim to Right Wing Side Roof allowing a 1/4 inch overhang to conceal closing of sliding roof.
- 58-Left Side Roof and Upper Roof Moulding - Parts E6 and P4 Photo's #150, #151, #152, & #153
 A-Use the same procedures as in step 55. Make sure Left Side Roof is slightly recessed from Fourth Floor Rear Wall.
- 59-Lower Roof Moulding - Part O4 Photo #154
 A-Use the same procedures as in step 56.
- 60-Chimneys and Chimney Tops - Parts H and H2 Photo's #155, & #156
 A-Glue chimneys on top of roof about 3 inches in from Upper Roof Mouldings and flush with back.

61-Fourth Floor Roof Corner Trim - Parts W Photo's #158, #159, #160, & #161

Note: It will be necessary to trim or sand these parts.

A-Glue and nail the 3/16" x 7/16" x 9 1/4" trim to inside corner on Front Side Roof.

B-Leave 1/16 inch gap between trim parts on openings to allow for painting.

Glue and nail trims as shown in photos.

62-Rear Wall House Trim and Fourth Floor Roof Trim - Parts U1 and V Photo's #156, #160, #161

A-Glue and nail Rear Wall House Trim to the back of Fourth Floor Rear Wall in line with the Left Side Roof.

B-Glue and nail Fourth Floor Roof Trim in line with the Rear Wall House Trim.

63-Front Wall Wing Trim - Part T1 Photo #158

A-Glue and nail as shown in photo.

64-Dormers and Dormer Tops Photo's #163, #164, & #165

A-Lay house on back or side.

B-Glue back edges of dormers and set evenly in place with openings on roof.

Allow to dry.

C-Set house upright.

D-Glue bottom and back edge of roof dormer tops and place evenly on top of dormers.

65-Nail Setting of House Photo #162

A-Use the same procedures as in step 28.

66-First Floor Porch Railing - Parts #1, #2, #3, #4, #5 and Porch Newel Posts (2)

Photo's #167, #168, & #169

Note: If you use Silicone Rubber to glue your stairways, railings, windows, or doors, they can be removed at a later time without much difficulty. Silicone Rubber is available at most hardware stores.

A-Some adjustments may be needed in railing lengths. Sand or cut if necessary.

B-The photo diagrams show the placement of the railing by the numbers on the parts list.

C-Glue assembled railing sections in place.

D-It is helpful to use masking tape to hold rails in place until dry.

67-Second Floor Porch Railing - Parts #6, #7, #8, #9, #10, #11 and Porch Newel Posts (2)

Photo's #167, #168, #169, #170, & #171

A- Use the same procedures as in step 66.

68-Interior Stairway and Interior Stairway Railings Photo's #172, #173, & #174

Note: It is easier to decorate the interior before the installation of the stairways.

A-Apply glue to side and bottom of stairways and the edge of the top floor.

B-Set in place and allow to dry.

C-Apply glue to bottom of stairway rail and place on stairway as shown in photo.

69-Installation of Interior Railings - Parts #12, #13, #14, Interior Newel Posts (2), and Interior Spacer Newel Posts (5) Photo's #175, #176, & #177

A-Assemble spacer newel post to both ends and pieces of railing #12 and one end of railing #14.

B-Assemble newel posts to both ends of railing #13

C-Glue one piece of railing #12 on the second floor between the first and second floor stairway. Glue the other piece of railing #12 between the second and third floor stairway.

D-Glue railing #13 and #14 about the fourth floor stairway opening.

70-Roof Top Railing and Roof Top Short Newel Posts - Parts #15, #16, #17, #18 and #19.

Photo's #178, #179, #180, & #181

- A-Set posts and railings about roof to become familiar with placement of parts.
- B-Use the spacer trim which is included with the windows and doors and not needed for your house, as a temporary height gauge for the placement of the railings. Glue as shown in photos.

71-Porch Step - Part G Photo #182

- A-Glue and nail to Rear Right Side Wall with steps slightly above the interior floor.

72-Bay Filler Sections - Parts #20 and #21 Photo's #183, & #184

- A-Glue parts butting at angles as shown in photos.

73-Installation of Bay Windows and Bay Filler Sections - Parts #20, #21 and #22

Photo's #185, #186, & #187

- A-Lay house on back.
- B-Remove the window frames and store them in a safe place for later installation. Set pieces in place to become familiar with assembly.
- C-The first floor bay window is placed upside down.
- D-The second floor bay window has no roof and is installed above first floor bay window filler section.
- E-The third floor bay window is placed with the roof right side up and above the second floor bay window filler section.
- F-Begin installation at the bottom and glue all contacting edges as you proceed. Use heavy objects to hold each section in place!

74-Side Roof Prop - Parts 2 Photo's #195, & #196

- A-Use these to hold Side Roofs open!

75-Windows and Doors Photo's #188, #189, #190, & #191

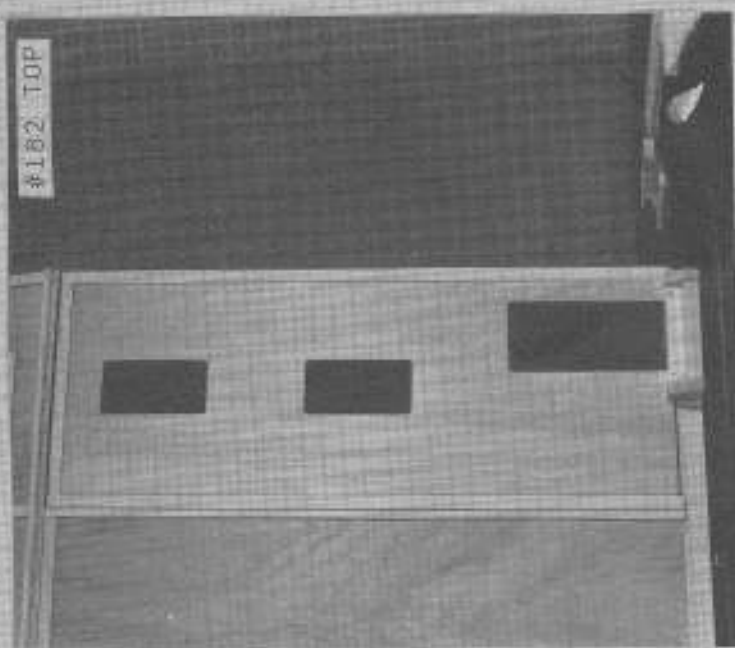
Note: Paint windows and doors before you glue them in place or glue them with Silicone Rubber so you can remove them at a future date!

- A-Glue lightly the back of the window and door frames and position them in place. Do not nail! Allow to dry using masking tape to hold them in place!
- B-Read instructions on the box of windows and doors for more helpful information.

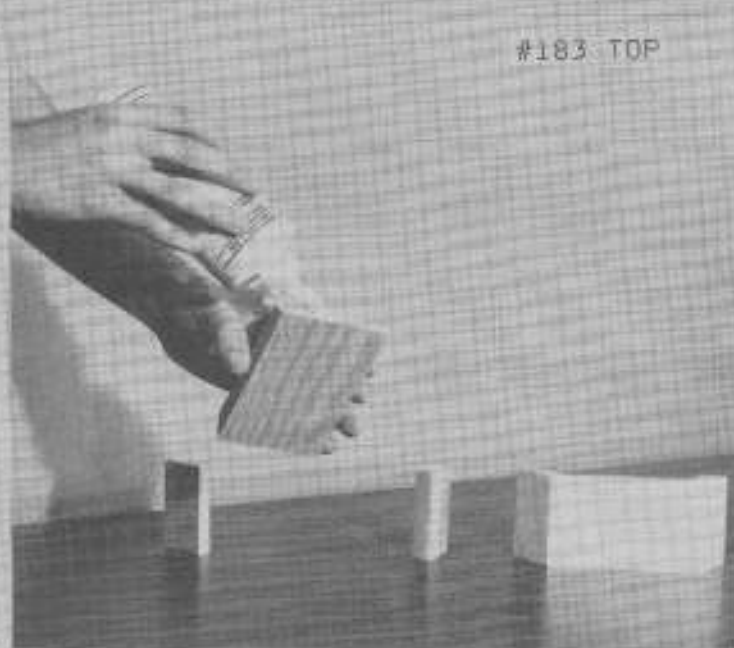
See your local dealer for
Customized Accessories to
 complement your house!



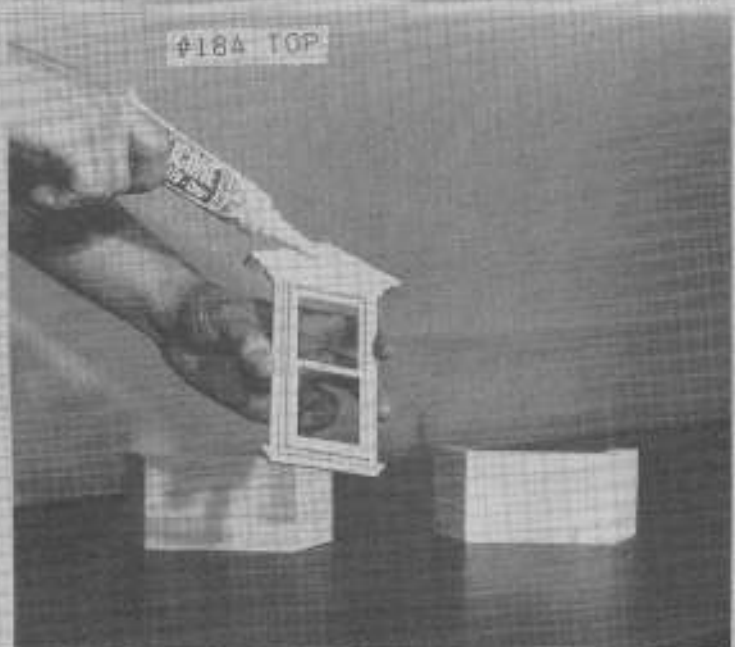
#182 TOP



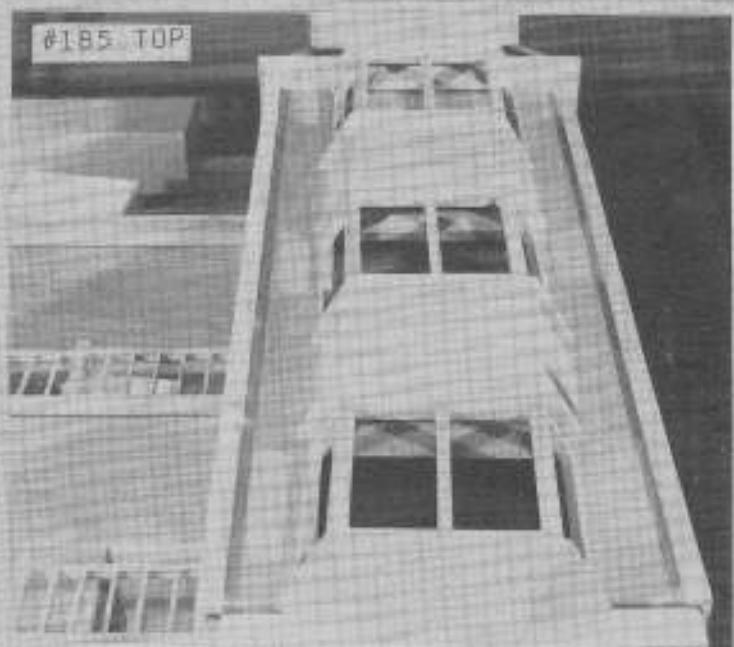
#183 TOP



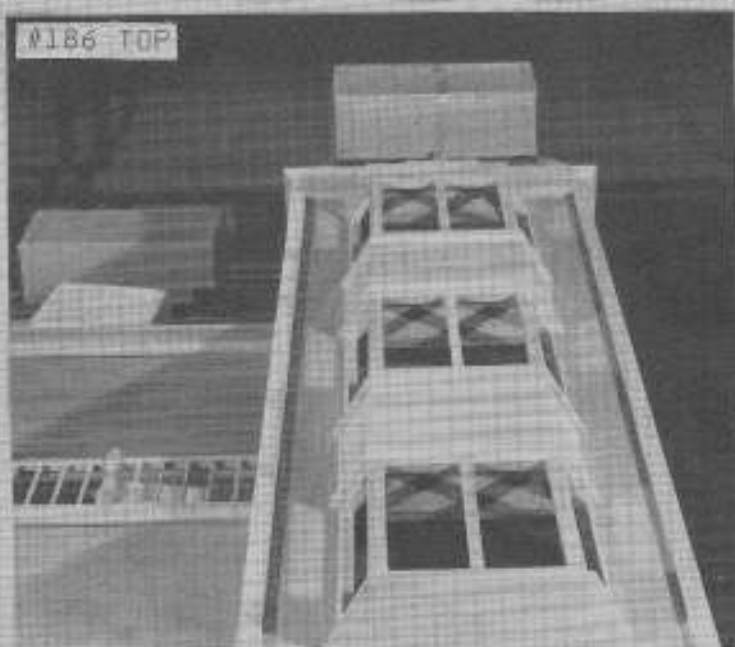
#184 TOP



#185 TOP



#186 TOP



#187 TOP

