

BROOKLYN, NEW YORK 11208

## THE *FRANKLIN* DOLLHOUSE

THE FRANKLIN DOLLHOUSE KIT contains 19 numbered die-cut wood sheets, 1 plastic windows sheet, sandpaper, and instructions. Have on hand any all-purpose white glue, masking tape, pencil and any hinges and hardware you may desire.

READ CAREFULLY THROUGH ALL INSTRUCTIONS BEFORE ASSEMBLING.

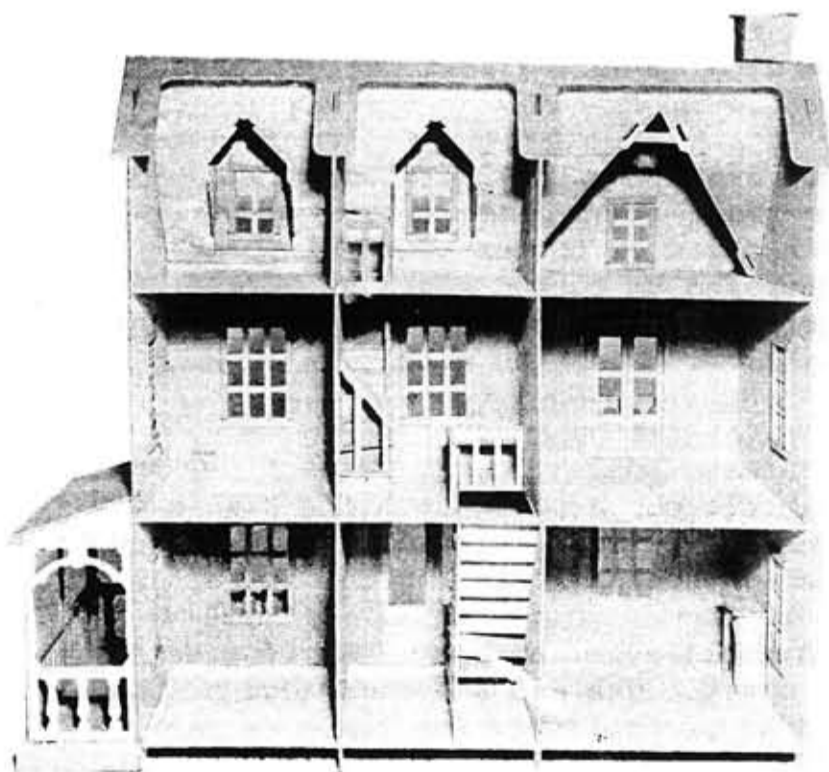
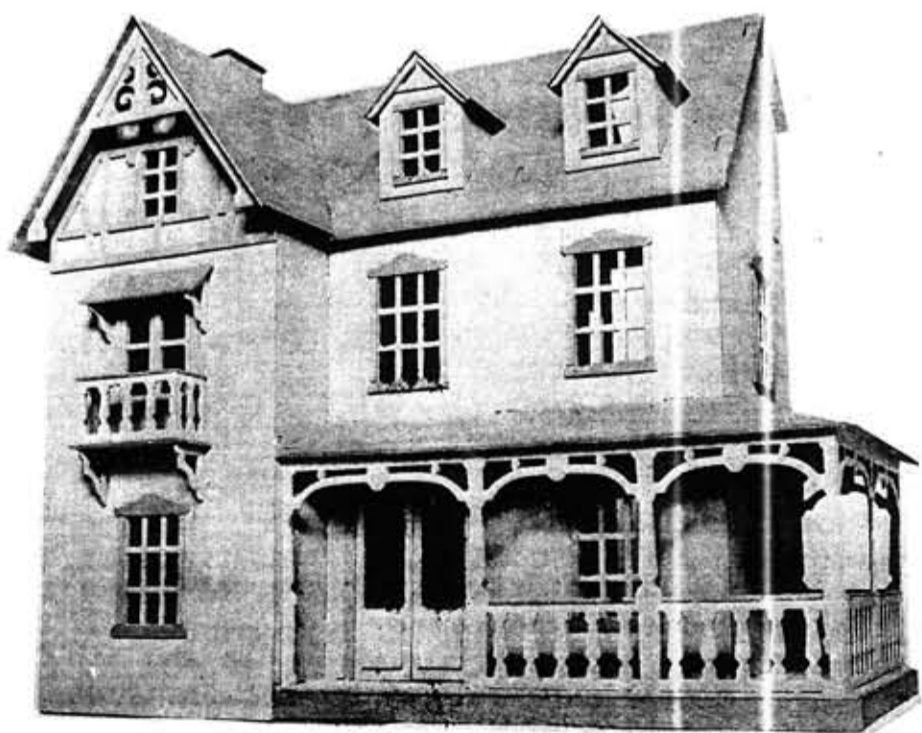
**IMPORTANT NOTE:** Before you begin, carefully remove each sheet from box and, referring to the Parts Layout Diagram, MARK IN PENCIL THE SHEET NUMBER AND LETTER DESIGNATION ON EACH PIECE. This will simplify identification of parts.

### ASSEMBLY HINTS

1. Follow step-by-step instructions in the order presented.
2. Before gluing any part, check for proper positioning and fit. Sand parts lightly where necessary, exercising care when sanding in direction of grain to avoid splintering.
3. Smooth side of wood should face outside surfaces of house.
4. Exercise care in removing windows from plastic sheet so they do not tear.

**PAINTING:** It is best to paint most of the house after assembly. As you come to each section in the instructions, determine if you want to paint those parts before assembling. If so, lay parts on newspaper and write identification next to each part. Use masking tape over tabs and slots. Allow parts to dry away from heat.

**NOTE:** Should any parts fall out of the wood sheets before marking for identification, REFER TO TEMPLATE DIAGRAM. Place the part on the same size template drawing and mark for identification.



### **A** FLOOR AND WALLS

1. Locate floors and partitions from sheets #1,2,3,8,14. Strip out slots and waste. Remove partition doors for later use.

2. Place first floor with front (long tabbed edge) facing you. Using a piece of the scrap wood as a guide, run a straight line of glue from the end of the 2 long slots to rear edge of 1st floor. Apply glue inside the slots.

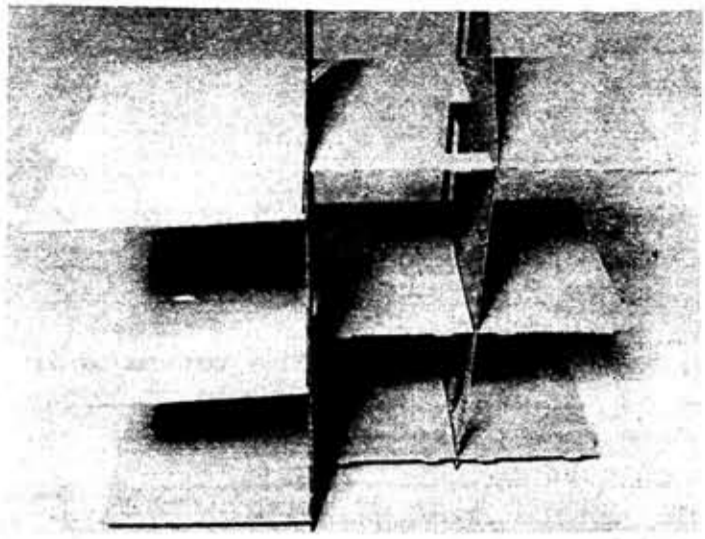
3. In the same manner apply glue to the left hand slot of 2nd and 3rd floors. Similarly, apply glue to right and left partitions except that glue lines will be running towards front edges.

4. Place 1st floor with front edge facing you. Slide the bottom slot of smaller partition #8 into the long floor slot to your right. Be sure that back edge of partitions are even with back edge of floor.

Next, slide left partition #14 into the floor slot to your left. Glue small floor tab into front notch in partition.

5. From the rear, slide the 2nd floor (smooth side up) into the long slots in middle of partitions so back edges are even.

6. Apply glue to inside edge of long slots in 3rd floor. Slide into position.



7. Place floor-partition assembly on its back with tabs facing up. Remove right front from sheet #19. Strip slots and set doors with contained parts aside. Without glue insert the 3 side tabs into left partition and align all floor tabs (4 on each floor) into slots. This will insure a square fit while drying. Tape corners. Remove front when dry.

**B** INTERIOR & EXTERIOR WINDOW TRIM; WINDOWS

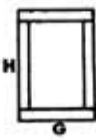
NOTE: You may want to paint window trim before assembly. It is also advisable to paint interior and exterior walls before installing windows and trim. Paint both sides and edges of all window pane strips.

1. Gather right and left sides (sheets #6, #11); right and left fronts (sheets #19, #7); dormer fronts (2 pcs., sheet #9B). Carefully strip out window cut-outs and slots. Set aside doors.

2. Locate plastic window sheet. Glue windows on interior (rough) side of walls as follows: Carefully remove windows (8 large and 3 small rectangles) from plastic sheet. Apply a very thin line of glue around outside edges of window. (Not to pane strips). Press appropriate plastic in place.

3. (a) For the 8 large windows gather the following parts: (mark and keep pieces separate) 32 pcs. side trims (sheet #16H); 16 pcs. interior tops and bottoms (sheet #16G); 16 pcs. exterior tops & bottoms (sheet #15).

(b) Install interior large window trim on inside (rough side) of walls, completing one window at a time. First glue on the two side trims, butting them along the window edge. Then glue on top and bottom interior trims, as illustrated.



(c) Install all exterior large window trim, gluing on side trims before top and bottom. Note: be sure wall is not upside down as you install trim. (Notches are at top of right front #19).



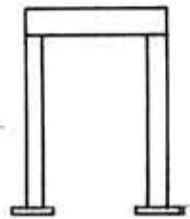
4. (a) For small (third story) windows gather the following: 2 dormer fronts (sheet #9B); left front (sheet #7); framing (sheet #13D); 10 pcs. side trims (sheet #15B); 10 pcs. interior/exterior tops and bottoms (sheet #15A).

(b) Strip out framing (#13D). Position rectangular cut-out over top window in left front (#7). Be sure all outer edges of frame are even with edges of left front or this will interfere with roof assembly.

(c) Following procedures in Step 3(b) and (c), install interior and exterior trim to small windows. (Framing comprises exterior trim on left front window).

**C** DOORS AND DOOR TRIM

1. Locate right front (#19). Remove interior entrance door trim (3 pcs.) from sheet #18 D,E. On rough side (interior), glue on side trims butted along side of doorway and with bottom edge even with top of slot. (Do not block slot). Glue top trim along top of doorway.



2. There are 2 layers of exterior trim around entrance doors. Remove wide trim (3 pcs.) from sheet #16C,D and 1/4" overlay trim (3 pcs.) from sheet #16E,F. Following procedure in Step C-1, install wide side trims and top trim around exterior of doorway. Next, glue on 1/4" overlay side trim, centered on wide trims (also even with top of slot). Glue on 1/4" top trim. (Note: if hinging doors, install overlay trim after hinging).



3. Locate left front (#7). Remove interior and exterior French door side trims (4 pcs., sheet #13A) and top trims (2 pcs., sheet #13B). Following above procedures, install trim around interior and exterior of French doorway. Do not block slot under door.

Note: Before installing any door, sand outside edges so that it fits freely in its opening. Allow extra clearance if painting.

4. (a) Gather entrance doors (removed earlier from sheet #19) and door backings (sheet #18). Strip window cut-outs and keep parts removed from doors near sheet #19. Sand edges of doors and backings flush.

(b) Remove 2 entrance windows from plastic sheet. Install plastic on rough side of door and allow to dry.

(c) Glue doors to backings.

(d) Glue raised panels (2 pcs.) from door cut-outs on sheet #18A onto exterior of doors, centered below each window.

(e) Glue or hinge doors onto right front piece.

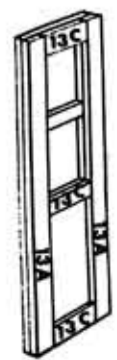
5. (a) Gather French doors (removed earlier from sheet #7). Carefully strip out window cut-outs and install plastic windows on rough side. (Do not apply glue to pane strips).

(b) Remove 4 stiles (sheet #13A) and 6 rails (sheet #13C). On the interior side of French doors, glue on stiles (as illustrated). Next glue on rails.

(c) Glue or hinge doors onto left front piece.

Optional: Gather doors removed earlier from partitions. Glue or hinge in place.

Note: be sure that installation will not interfere with staircase assembly.



## D BALCONY

1. Place left front (#7) balcony lying face up. Gather the following parts: balcony floor and canopy (sheet #17); 2 floor supports (sheet #17D,E); 2 canopy supports (sheet #18B,C); front railing (sheet #17C); 2 side railings (sheet #19A, removed earlier from door cut-outs); balcony hand-rails (3 pcs., sheet #17A,B).

2. Apply glue to tabbed edge of balcony floor (sheet #17I) and insert into slot below French doors.

3. Apply glue to tabbed and straight edges of floor supports (the right-angled supports). Insert into slots under floor.

4. Apply glue to tabbed edge of canopy supports and insert into slots alongside French doors. Center canopy on top of supports.

5. Assemble balcony railings with smooth sides facing out as follows: Apply glue to front edge of each of the side railings and butt against front railing. Be sure railings are not upside down. Check pattern of railings on photograph or see porch railing on sheet #17. Tape corners until dry. Install railing assembly (with railings right-side up), centered over doors.

6. Apply glue to top edges of railings. Center short handrail strips on top of side railings, butting house wall. Next position front handrail strip.



## E CURVED STAIRCASE: 1st FLOOR

Be sure you have pencil-marked each piece for identification. (You may wish to paint these parts before assembling).

1. Gather the following parts from sheet #4: stair side; 8 treads and 9 risers lettered B through R.

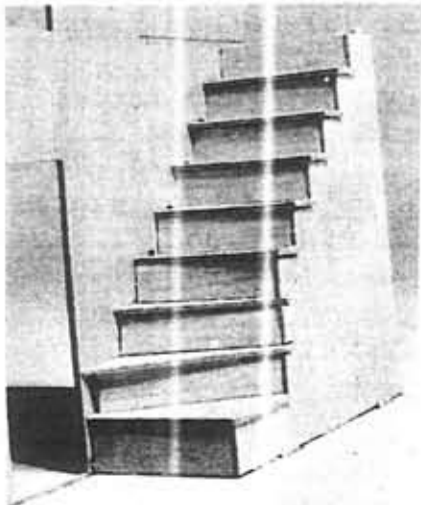
Note: Risers and treads are lettered in the order of assembly, from bottom to top.

2. Place house upright with front facing you. Apply glue to top and bottom (tabbed) edges of stair side. With long straight edge at rear of house, insert tabs into 1st floor slots near left partition. Position top tab in 2nd floor slot.

3. Apply glue to bottom edge and 2 short edges of 1st Riser (B). Position on floor at staircase bottom, wedged between wall and stair side. Check that floor is at same height with doorway at left.

4. Apply glue to tabbed edge of 1st Tread (C), to top of 1st Riser and adjacent notch on stair side. Place tread with tab in lowest wall slot, flush to wall.

5. Apply glue to 2nd Riser (D). Position diagonally between wall and stair side, resting on top of tread below.



(3)

6. Following the above procedures, install 2nd Tread (E), 3rd Riser (F) diagonally, 3rd Tread (G), 4th Riser (H) not diagonally, 4th Tread (I), 5th Riser (J), 5th Tread (K), 6th Riser (L), 6th Tread (M), 7th Riser (N), 7th Tread (O), 8th Riser (P), 8th Tread (Q), 9th Riser (R).

## F CURVED STAIRCASE: 2nd FLOOR

1. Pencil-mark for identification and gather the following parts from sheet #10: stair side; stair back; 8 Treads and 8 Risers lettered B through Q.

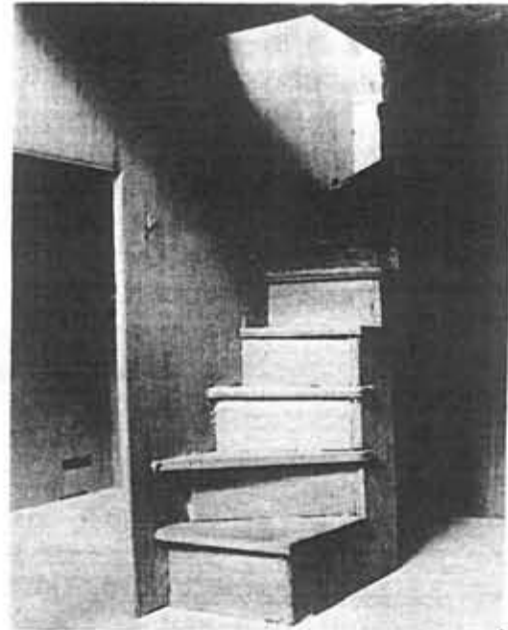
Note: Risers and treads are lettered in the order of assembly, from bottom to top.

2. Face rear of house. Hold stair back so that slot is in upper right corner (smooth side of wood facing you). Apply glue to both tabbed edges and top edge. Insert left tab into vertical slot in right partition wall (to your left).



3. Glue in stair side, inserting tabs in 2nd and 3rd floor slots and aligning slot over tab protruding from stair back.

4. Following procedure similar to 1st floor staircase assembly, install 1st Riser (B), 1st Tread (C), 2nd Riser (D) diagonally, 2nd Tread (E), 3rd Riser (F) diagonally, 3rd Tread (G), 4th Riser (H), 4th Tread (I), 5th Riser (J), 5th Tread (K), 6th Riser (L), 6th Tread (M), 7th Riser (N) diagonally, 7th Tread (O) (insert wall tab, then slide down into position), 8th Riser (P) diagonally, 8th Tread (Q), with tab in stair back slot.



## G SIDES AND FRONT WALLS

1. Apply glue along both side edges of 1st, 2nd and 3rd floors and position right and left house sides (sheets #6,#11), aligning floor tabs into slots. Tape until dry.

2. Apply glue to all front (tabbed) edges of the 3 floors and to the (non-tabbed) front edges of partitions and sides. Apply glue to tabbed edge of right front (sheet #19) and insert into left partition slots. Align 12 floor tabs into front slots. Tape until dry.

3. Place left front (sheet #7) squarely on edges of left partition and left side, with bottom edge even with surface of your work table. Tape until dry. It must be square to insure proper height and angle for peak roof assembly.

4. Carefully lay house on its back and rest objects on front walls to aid gluing.

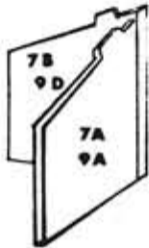
## H ROOF AND DORMERS

1. Place house in upright position. Remove main roof from sheet #15. Strip out slots and scrap. Apply glue to front-facing top (tabbed) edges of sides and partitions. Position main roof on tabs and tape until dry.

2. Remove right (inner) peak roof from sheet #12. Strip slots. Apply glue to (tabbed) top edges of peak front wall and to tabbed edge of peak roof. Insert tabs into main roof slots and align over front tabs. Remove left (outer) peak roof from sheet #13. Strip slots. Apply glue to tabbed edge and long adjacent edge (top). Place in position, butting underside of inner peak roof.

3. Apply glue to long edge of rear frame (sheet #16) and to top (tabbed) edges of sides and partitions. Place in position, butting underside of main roof. Tape until dry.

4. Remove right and left dormer roofs from sheet #7A,B. (A is smaller than B). Apply glue to long straight edge of A and butt to underside edge of B, forming a right angle. Allow to dry in position illustrated so front edges will be even. Repeat procedure with dormer roofs from sheet #9A,D, applying glue to smaller A.



5. Remove from sheet #16 2 dormer right sides (A) and 2 dormer left sides (B). Apply glue to tabbed edge and smooth side of tab on sides A. Place each into right side notch of each dormer cut-out in main roof. (Smooth side will be exterior; grain direction runs vertically). Repeat procedure to install dormer left sides B.

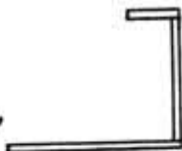
6. Locate 2 dormer fronts (removed earlier, sheet #9B). Apply glue along front edges of dormer sides and place fronts on top.

7. Apply glue to top edges of dormer fronts and to tabbed edges of dormer roof assemblies. Position with tabs in main roof.

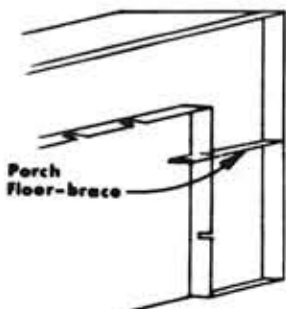
## I WRAP-AROUND PORCH

1. Remove porch floor from sheet #5 and strip slots. Apply glue along all tabbed edges and position with 6 tabs in wall slots.

2. Lay house on its back. Apply glue to both short edges and one long edge of base strip #9G. Install under rear edge of porch floor, forming a square corner. Next, install base strip #9E under porch side, butting glued edge of #9G. Next, install base strip #9J along front of porch.



3. Remove porch floor braces from sheet #9F (2 pcs.) and #9K (2 pcs.) On each brace F apply glue to long edge with slot opening and one short edge that will butt right base strip. Slide slot of each brace over slot in bottom of right side wall.



Similarly, install braces K under front porch floor (in slots at bottom of right front wall).

4. Remove rear porch railing from sheet #18 and strip scrap. Apply glue to both side edges and bottom. Position tabs in rear porch floor slots.

Remove side porch railing from sheet #5. Label Parts within and remove along with scrap. Install with end butted against glued edge of rear railing.

Apply glue to front edge of side railing. Remove front porch railing from sheet #17. Apply glue to bottom edges and to side that butts house. Insert into slots.

5. Apply glue to all top (tabbed) edges of the porch railings. Apply glue to tabbed edge of front porch roof (sheet #10). Install with tabs in house front. Apply glue to tabbed edge and slanted edge of side porch roof (sheet #12). Insert tabs in house side. Tape corner where roofs meet.

6. Remove porch handrail strips from sheet #17E (2 pcs.), G (2 pcs.) and H. Apply glue to top edges of porch railings (between posts) and center strips on top.

## J BANNISTERS

1. Apply glue to bottom of posts and 2 side edges of bannister #5D. Butt against wall and along edge of 2nd floor stairwell near house front.



Glue bannister #5E along stairwell edge with straight side butted against glued edge of bannister #5D.

2. Apply glue to bottom of posts and to smooth side of top post of bannister #4A. Position on treads with top post aligned with post of bann.#5E.



3. Apply glue to top edges of the 3 bannisters. Center hand-rail strip #5A on bann. #5D and butt against wall. Next, place handrail #5B on bann. #5E so it covers edge of bann #4A.

Position handrail #5C on bann. #4A.

4. Install bannister #10S on 1st (bottom) tread of 2nd fl. staircase. Install bann. #10R with posts on 4th and 5th treads. Center hand-rail #10X on bann. #10R; and handrail #10Y on bann. #10S.

5. Apply glue to both side edges and post bottoms of bann. #10T; place along rear edge of 3rd floor stairwell, butted against wall. Install bann. #10U, butted against edge of bann.#10T. Center handrail #10V on bann. #10T; next center handrail #10W on bann. #10U.



(continued)

**TEMPLATE**

**K HOUSE TRIM**

Note: Refer to photographs for placement.

1. Glue dormer trims (2 pcs., sheet #11A) to dormer fronts. (See photo).
2. Apply glue to longest edge on each dormer roof trim (4 pcs., sheet #11B). Position under roofs, against trim #11A.
3. Remove 2 peak roof trims from sheet #9L,M. Apply glue to back (rough side) of upper triangle portion of #9L. Place smooth side of #9M on glue lines, making sure all edges of the 2 pieces are even. Glue trim under peak roof, recessed 1/4".

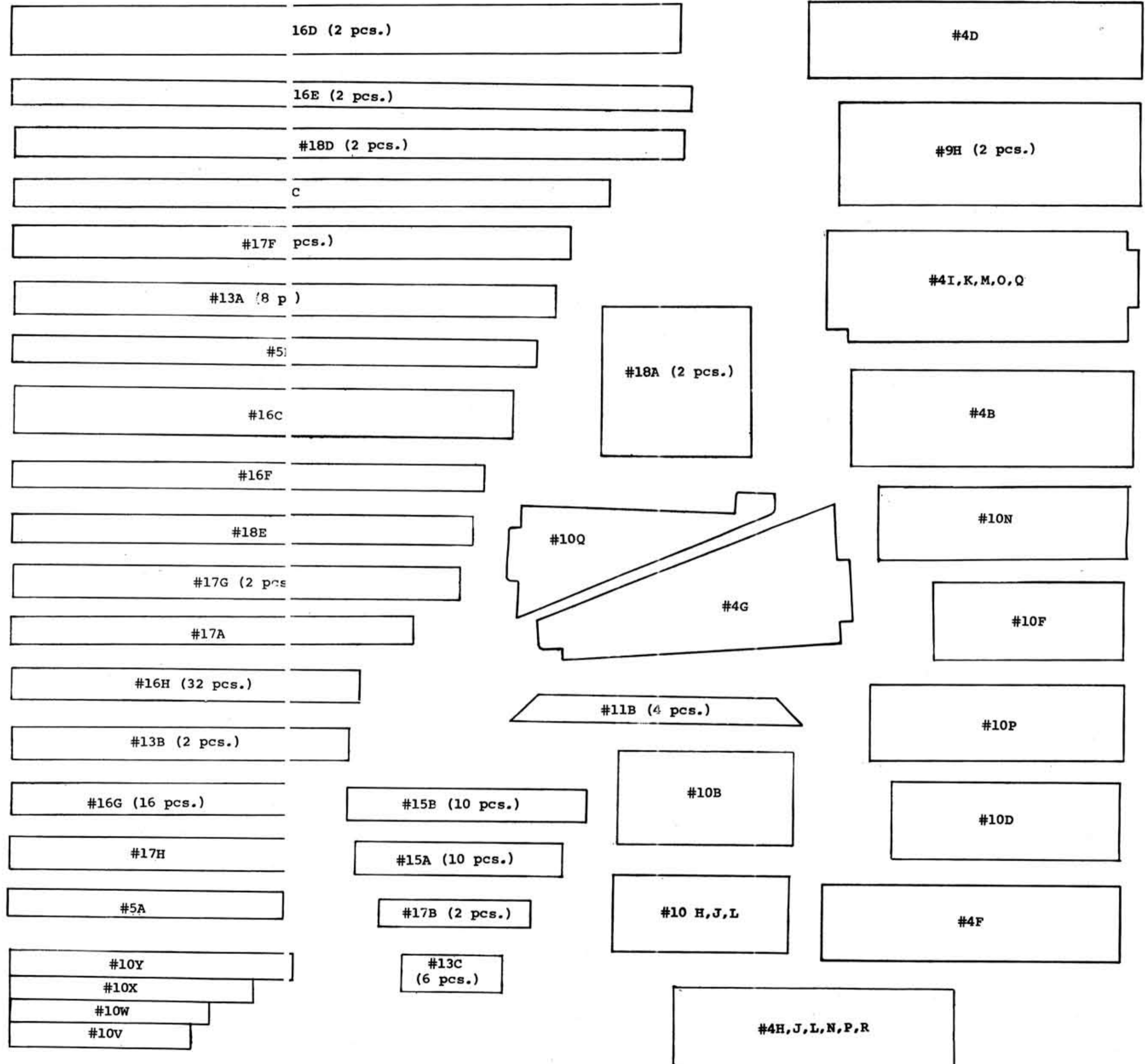
**L FIREPLACE AND CHIMNEY**

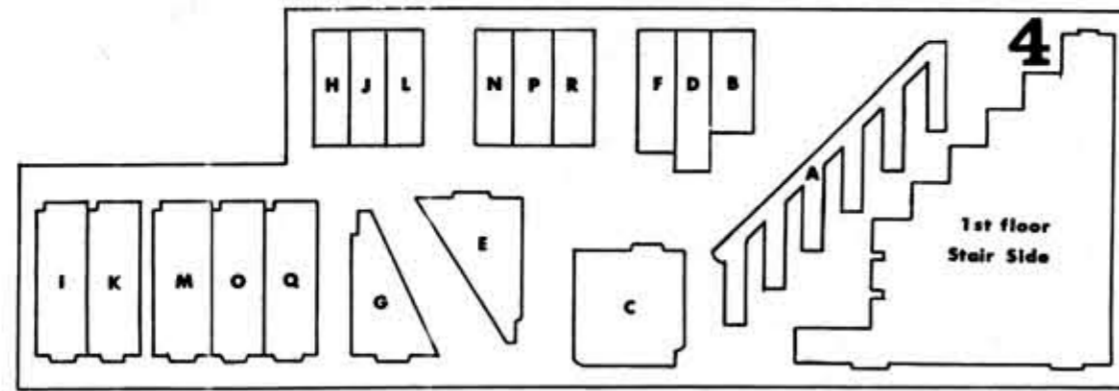
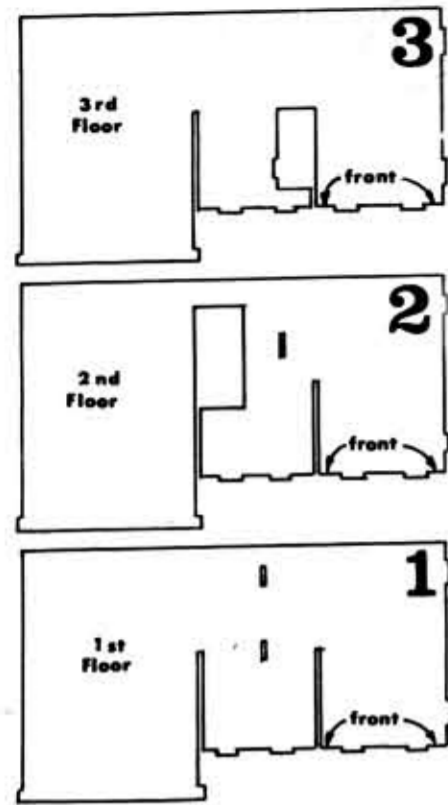
1. Remove 4 fireplace parts from sheet #9C, H (2 pcs.), I. Apply glue to long edge of each side piece and butt against front. Glue on top with its back edge flush to back edge of side pieces.
2. Apply glue to longest edge on each chimney side (2 pcs.) (sheet #10), and butt against chimney front. Apply glue to short (rear) edges of chimney sides and install chimney back (with grain running in same direction). Apply glue to all top edges and install chimney top, evenly overhanging all sides. Glue chimney on main roof, to left side of peak roof.

THANK YOU for choosing an ARTPLY dollhouse kit.

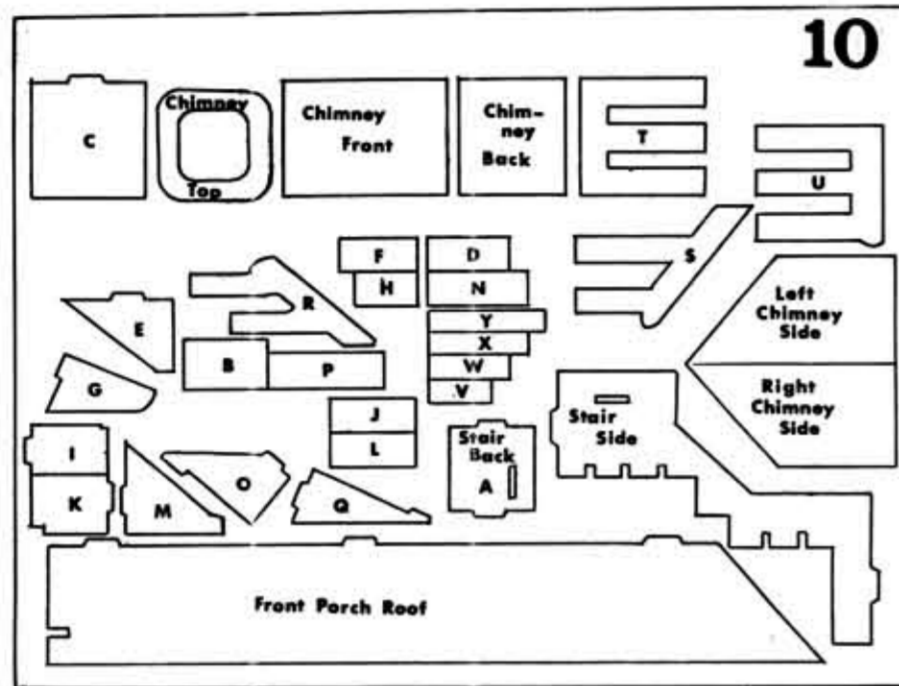
This kit has been carefully inspected before packaging. As with any natural wood product there may occur variations in color, grain properties, etc. If, however, any parts are found to be damaged or missing we will gladly send to the original purchaser replacement parts upon receipt of written notification within 30 days of purchase. Notification must include your name, address, proof of purchase (customer receipt) and description of part(s) to be replaced.

ARTPLY Co., Inc.  
907 Shepherd Avenue  
Brooklyn, N.Y. 11208



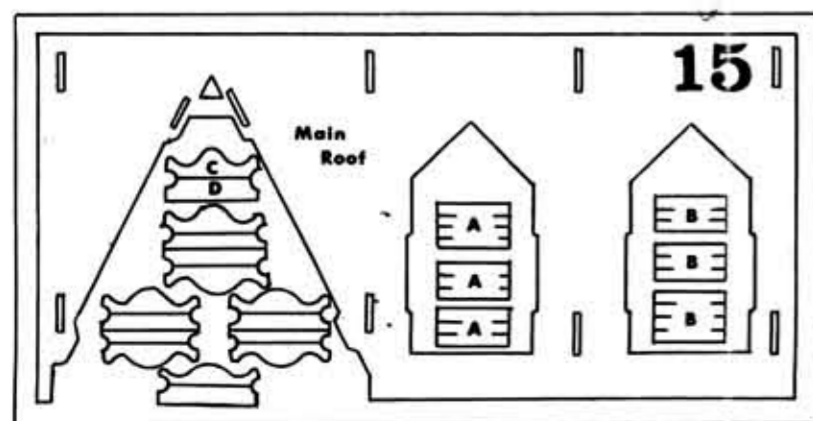


#4A 1st Floor slanted bannister  
B - R 1st Fl. Treads and Risers

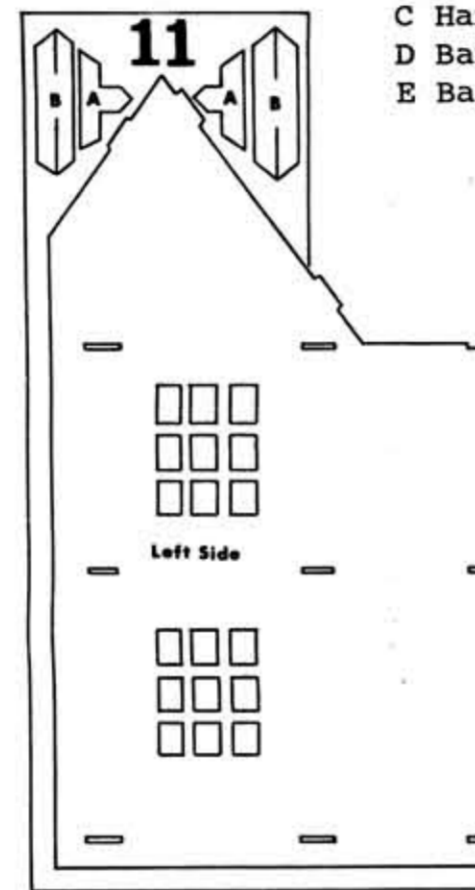


#10A Stair back- 2nd fl. staircase  
B-Q Risers and Treads, 2nd fl. stairs  
R Bannister on treads, 2nd fl. stairs  
S Bannister on 1st tread, 2nd fl. stairs  
T Bannister, 3rd fl. stairwell  
U Bannister, 3rd fl. stairwell  
V Handrail - Bann. #10T  
W Handrail - Bann. #10U  
X Handrail - Bann. #10R  
Y Handrail - Bann. #10S

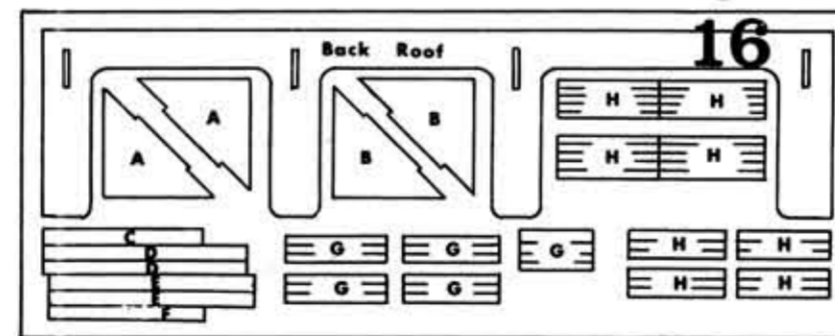
#9A Left Dormer Roof  
B Dormer Front (2 pcs.)  
C Fireplace Front  
D Right Dormer Roof  
E Side Base Strip  
F Right Porch Floor Braces (2 pcs.)  
G Rear Base Strip  
H Fireplace Sides (2 pcs.)  
I Fireplace Top  
J Front Base Strip  
K Front Porch Floor Braces (2 pcs.)  
L Peak Roof Trim  
M Peak Roof Trim



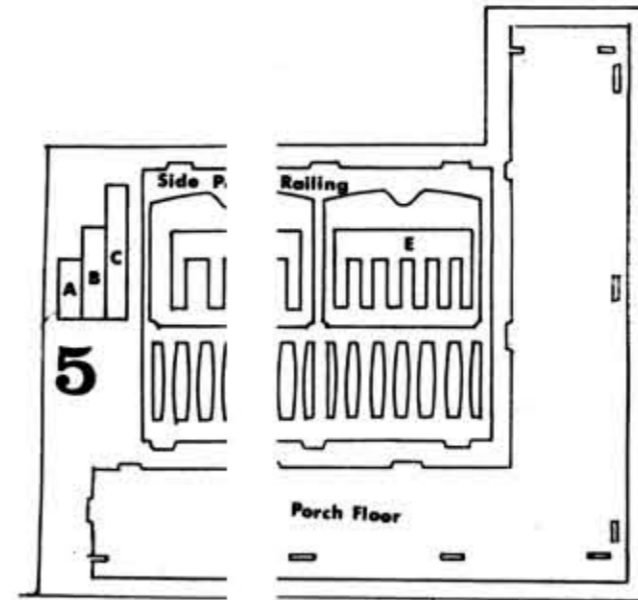
#15A Int. & Ext. small window tops & bott. (10 pcs.)  
B Int. & Ext. small window side trims (10 pcs.)  
C Ext. large window tops (8 pcs.)  
D Ext. large window bottoms (8 pcs.)



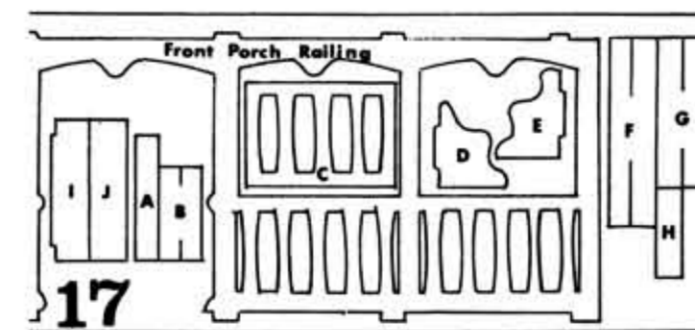
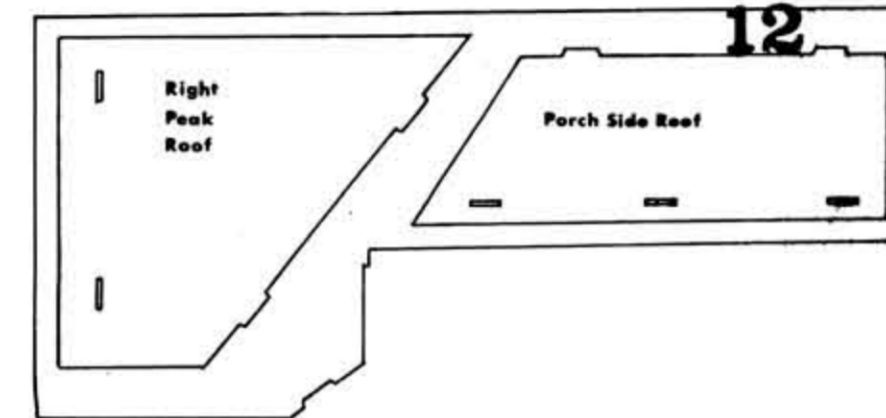
#11A Dormer front trim (2 pcs.)  
B Dormer roof trim (4 pcs.)



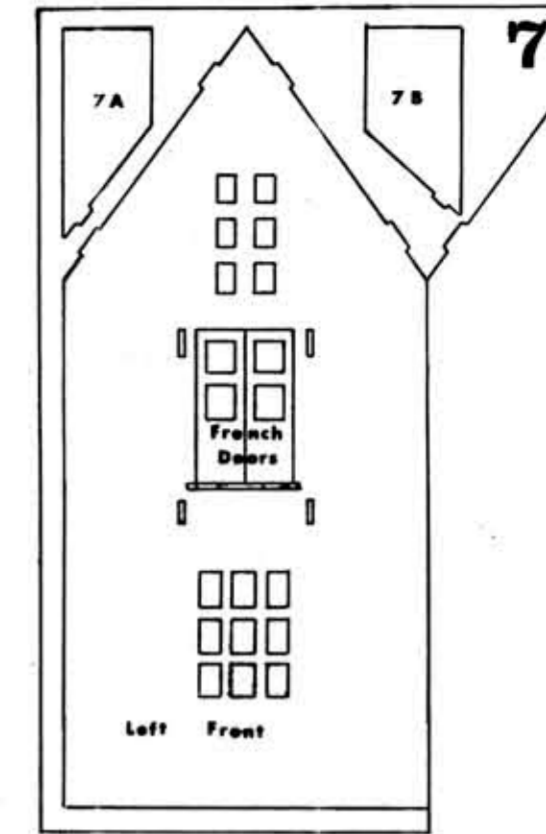
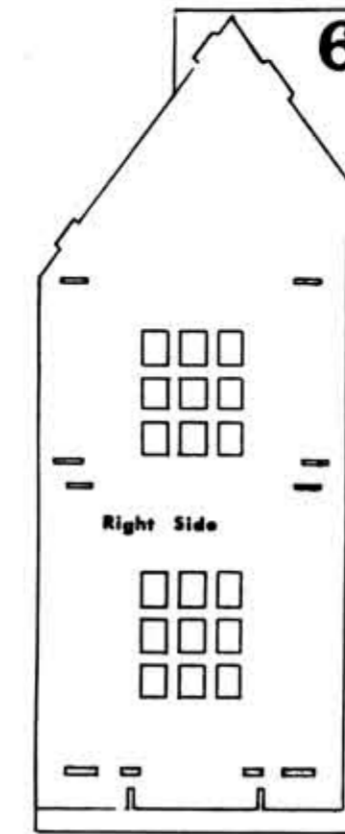
#16A Dormer Right Sides (2 pcs.)  
B Dormer Left Sides (2 pcs.)  
C Ext. Entrance Top Trim  
D Ext. Entrance Side Trims (2 pcs.)  
E Ext. Entrance 1/4" Side Trims (2 pcs.)  
F Ext. Entrance 1/4" Top Trim  
G Int. Large Window Tops & Bottoms (16 pcs.)  
H Int. & Ext. Lge. Window Side Trims (32 pcs.)



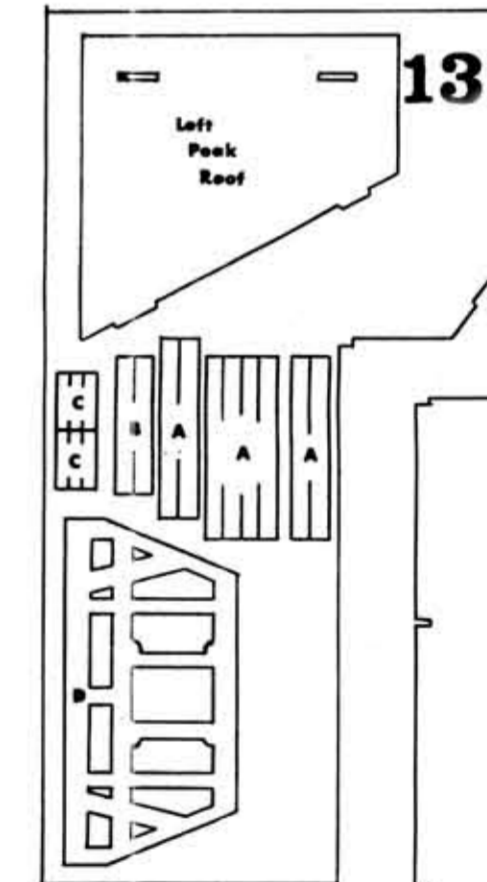
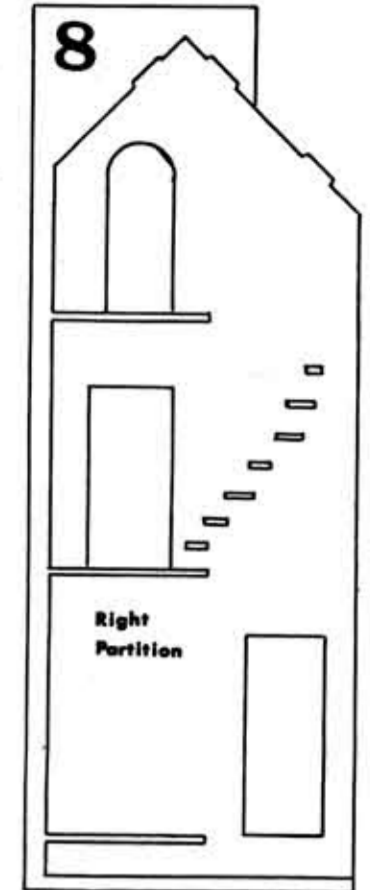
#5A Handr. - Bann. #5D  
B Handr. - Bann. #5E  
C Handr. - Bann. #4A  
D Bann. - 2nd fl. stairwell  
E Bann. - 2nd fl. stairwell



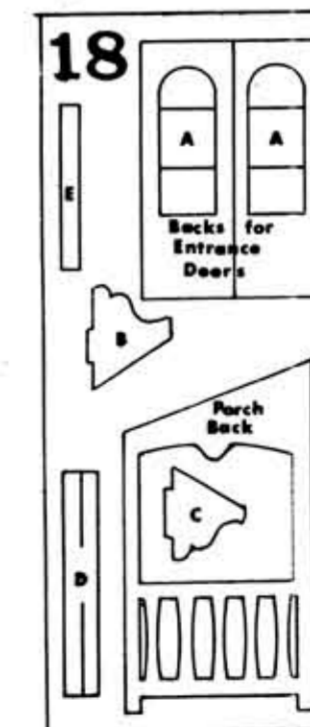
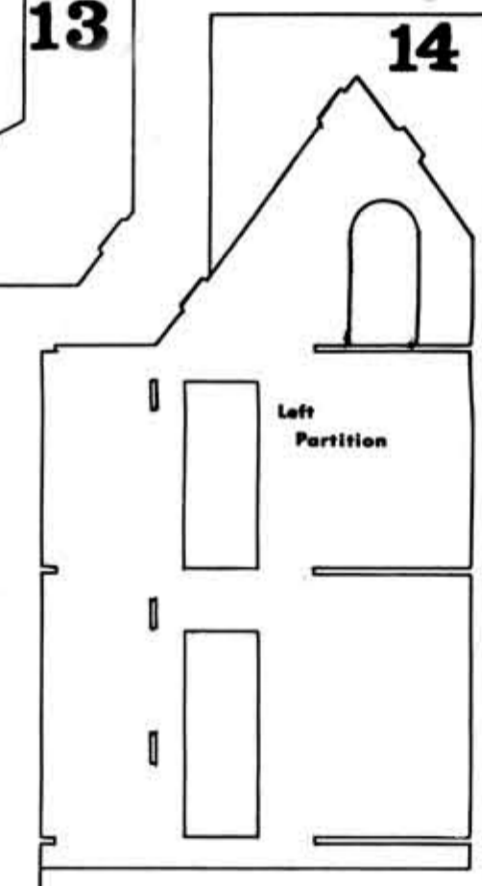
#17A Balcony Front Handrail  
B Balcony Side Handrails (2 pcs.)  
C Balcony Front Railing  
D Balcony Floor Support, Right  
E Balcony Floor Support, Left  
F Handrails - Side Porch (2 pcs.)  
G Handrails - Front Porch (2 pcs.)  
H Handrails - Back Porch (2 pcs.)  
I Balcony floor  
J Balcony canopy



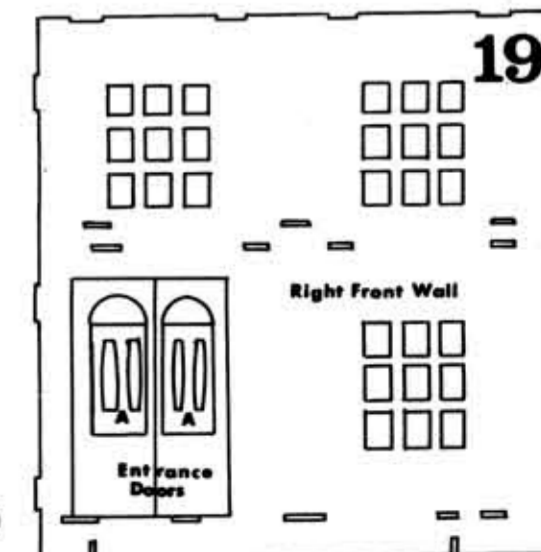
#7A Left Dormer Roof  
B Right Dormer Roof



#13A French door stiles (4 pcs.)  
A Fr. door Ext. & Int. side Trims (4 pcs.)  
B Fr. door Ext. & Int. top Trim (2 pcs.)  
C French door rails  
D Framing Trim



#18A Entrance Door Raised Panel (2 pcs.)  
B Balcony Canopy (Roof) Support, Right  
C Balcony Canopy (Roof) Support, Left  
D Int. Entrance Side Trims (2 pcs.)  
E Int. Entrance Top Trim



#19A Balcony Side Railings (2 pcs.)

**ARTPLY CO., Inc.**  
BROOKLYN, NEW YORK 11208

©1974 ARTPLY CO., INC.